

For Research Use Only

# EXOSC10 Polyclonal ANTIBODY



Catalog Number: 11178-1-AP

Featured Product

2 Publications

## Basic Information

Catalog Number:  
11178-1-AP

Size:  
20 µg/150 µl

Source:  
Rabbit

Isotype:  
IgG

Purification Method:  
Antigen affinity purification

Immunogen Catalog Number:  
AG1666

GenBank Accession Number:  
BC039901

GeneID (NCBI):  
5394

Full Name:  
exosome component 10

Calculated MW:  
98 kDa

Observed MW:

Recommended Dilutions:

WB 1:500-1:2000

IP 0.5-4.0 µg for IP and 1:200-1:1000 for WB

IHC 1:20-1:200

IF 1:20-1:200

## Applications

Tested Applications:  
IF, IHC, IP, WB, ELISA

Cited Applications:  
IF, WB

Species Specificity:  
human, mouse

Cited Species:  
human

**Note: suggested antigen retrieval with TE buffer pH 9.0; (\*) Alternatively, antigen retrieval may be performed with citrate buffer pH 6.0**

Positive Controls:

WB : HeLa cells;

IP : MCF-7 cells;

IHC : human breast cancer tissue;

IF : NIH/3T3 cells;

## Background Information

About 50% of patients with polymyositis/scleroderma (PM-Scl) overlap syndrome are reported to have autoantibodies to a nuclear nucleolar particle termed PM-Scl. Exosome component 10 (EXOSC10), also named autoantigen PM/Scl 2, is the 100 kDa antigen component of PM-Scl and is recognized by most sera of PM-Scl patients. EXOSC10 is strongly enriched in the nucleolus and a small amount has been found in cytoplasm supporting the existence of a nucleolar RNA exosome complex form. As a putative catalytic component of the RNA exosome complex which has 3'-5' exonuclease activity, EXOSC10 participates in a multitude of cellular RNA processing and degradation events.

## Notable Publications

Author	Pubmed ID	Journal	Application
Chi-Kang Tseng	26628367	Cell Rep	WB
Alan L Jiao	30538148	RNA	IF

## Storage

Storage:

Store at -20°C. Stable for one year after shipment.

Storage Buffer:

PBS with 0.1% sodium azide and 50% glycerol pH 7.3.

Aliquoting is unnecessary for -20°C storage

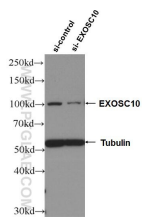
For technical support and original validation data for this product please contact:

T: 1 (888) 4PTGLAB (1-888-478-4522) (toll free in USA), or 1(312) 455-8498 (outside USA)

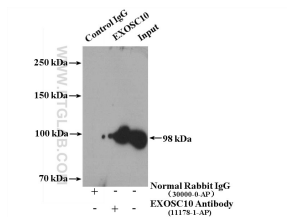
E: [proteintech@ptglab.com](mailto:proteintech@ptglab.com)  
W: [ptglab.com](http://ptglab.com)

This product is exclusively available under Proteintech Group brand and is not available to purchase from any other manufacturer.

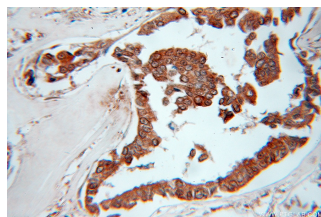
## Selected Validation Data



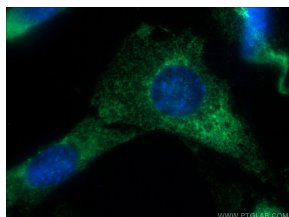
WB result of EXOSC10 antibody (11178-1-AP, 1:1000; incubated at room temperature for 1.5 hours) with sh-Control and sh-EXOSC10 transfected HeLa cells



IP result of anti-EXOSC10(IP:11178-1-AP, 4ug; Detection:11178-1-AP 1:300) with MCF-7 cells lysate 3200 ug



Immunohistochemical of paraffin-embedded human breast cancer using 11178-1-AP(EXOSC10 antibody) at dilution of 1:50 (under 40x lens)



Immunofluorescent analysis of NIH/3T3 cells using 11178-1-AP(EXOSC10 antibody) at dilution of 1:50 and Alexa Fluor 488-conjugated AffiniPure Goat Anti-Rabbit IgG(H+L)