

For Research Use Only

# ENO1 Polyclonal antibody

Catalog Number: 11204-1-AP

Featured Product

81 Publications



## Basic Information

### Catalog Number:

11204-1-AP

### Size:

150ul, Concentration: 600 ug/ml by Nanodrop;

### Source:

Rabbit

### Isotype:

IgG

### Immunogen Catalog Number:

AG1692

### GenBank Accession Number:

BC015641

### GeneID (NCBI):

2023

### ENSEMBL Gene ID:

ENSG00000074800

### UNIPROT ID:

P06733

### Full Name:

enolase 1, (alpha)

### Calculated MW:

47 kDa

### Observed MW:

47 kDa

### Purification Method:

Antigen affinity purification

### Recommended Dilutions:

WB: 1:2000-1:12000

IP: 0.5-4.0 ug for 1.0-3.0 mg of total protein lysate

IHC: 1:500-1:2000

IF/ICC: 1:50-1:500

FC (Intra): 0.20 ug per 10<sup>6</sup> cells in a 100 µl suspension

## Applications

### Tested Applications:

WB, IHC, IF/ICC, FC (Intra), IP, ELISA

### Cited Applications:

WB, IHC, IF, IP, CoIP

### Species Specificity:

human, mouse

### Cited Species:

human, mouse, rat

**Note-IHC: suggested antigen retrieval with TE buffer pH 9.0; (\*) Alternatively, antigen retrieval may be performed with citrate buffer pH 6.0**

### Positive Controls:

**WB**: HeLa cells, human skeletal muscle tissue, mouse skeletal muscle tissue, L02 cells, PC-3 cells, SGC-7901 cells, mouse liver tissue

**IP**: mouse skeletal muscle tissue,

**IHC**: human stomach cancer tissue, human colon cancer tissue, human liver cancer tissue

**IF/ICC**: HepG2 cells,

**FC (Intra)**: A549 cells,

## Background Information

Enolase is an important glycolytic enzyme involved in the interconversion of 2-phosphoglycerate to phosphoenolpyruvate. Enolase were down-regulated in oxLDL-treated cells or in VLDL-treated cells. And it identified which are associated with glucose metabolism were down-regulated in the process of foam cells formation. (PMID: 19756395)

## Notable Publications

Author	Pubmed ID	Journal	Application
Bing Sun	27684953	PLoS One	WB
Si Gao	28910549	Can J Physiol Pharmacol	WB
Xiaoduan Li	34510316	Cell Biol Toxicol	WB,IHC

## Storage

### Storage:

Store at -20°C. Stable for one year after shipment.

### Storage Buffer:

PBS with 0.02% sodium azide and 50% glycerol, pH7.3

Aliquoting is unnecessary for -20°C storage

\*\*\* 20ul sizes contain 0.1% BSA

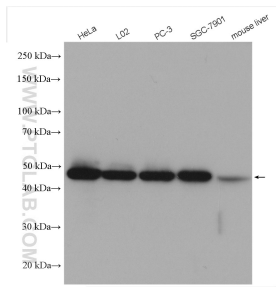
For technical support and original validation data for this product please contact:

T: 1 (888) 4PTGLAB (1-888-478-4522) (toll free in USA), or 1(312) 455-8498 (outside USA)

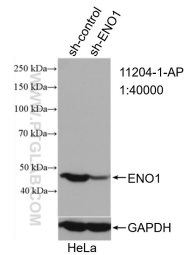
E: [proteintech@ptglab.com](mailto:proteintech@ptglab.com)  
W: [ptglab.com](http://ptglab.com)

This product is exclusively available under Proteintech Group brand and is not available to purchase from any other manufacturer.

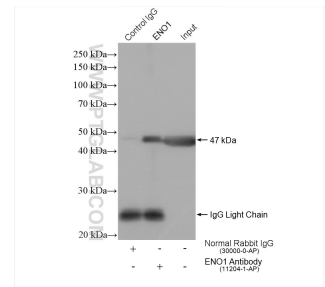
## Selected Validation Data



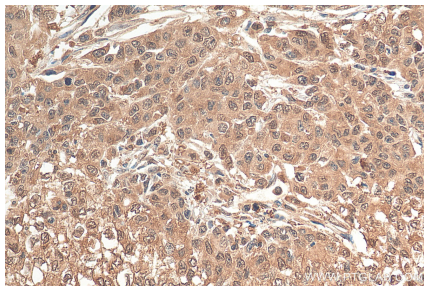
Various lysates were subjected to SDS PAGE followed by western blot with 11204-1-AP (ENO1 antibody) at dilution of 1:6000 incubated at room temperature for 1.5 hours.



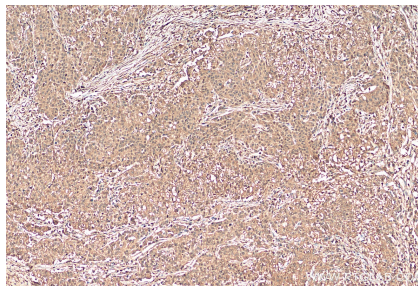
WB result of ENO1 antibody (11204-1-AP; 1:40000; incubated at room temperature for 1.5 hours) with sh-Control and sh-ENO1 transfected HeLa cells.



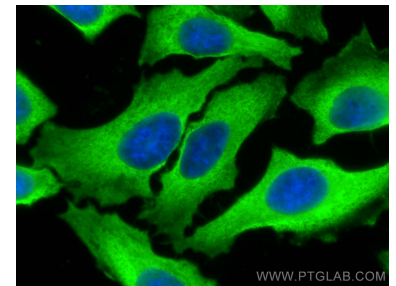
IP result of anti-ENO1 (IP:11204-1-AP, 4ug; Detection:11204-1-AP 1:8000) with mouse skeletal muscle tissue lysate 1280 ug.



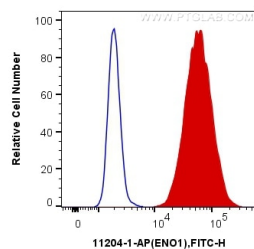
Immunohistochemical analysis of paraffin-embedded human stomach cancer tissue slide using 11204-1-AP (ENO1 antibody) at dilution of 1:1000 (under 40x lens). Heat mediated antigen retrieval with Tris-EDTA buffer (pH 9.0).



Immunohistochemical analysis of paraffin-embedded human stomach cancer tissue slide using 11204-1-AP (ENO1 antibody) at dilution of 1:1000 (under 10x lens). Heat mediated antigen retrieval with Tris-EDTA buffer (pH 9.0).



Immunofluorescent analysis of (-20°C Methanol) fixed HepG2 cells using ENO1 antibody (11204-1-AP) at dilution of 1:200 and CoraLite®488-Conjugated Goat Anti-Rabbit IgG(H+L).



1X10<sup>6</sup> A549 cells were intracellularly stained with 0.2 ug Anti-Human ENO1 (11204-1-AP) and CoraLite®488-Conjugated Goat Anti-Rabbit IgG(H+L) at dilution 1:1000 (red), or 0.2 ug Control Antibody. Cells were fixed with 4% PFA and permeabilized with Flow Cytometry Perm Buffer (PF00011-C).