

For Research Use Only

MCM7 Polyclonal ANTIBODY



Catalog Number: 11225-1-AP **5 Publications**

Basic Information

Catalog Number: 11225-1-AP	GenBank Accession Number: BC013375	Purification Method: Antigen affinity purification
Size: 150UL, Concentration: 267 µg/ml by Bradford method using BSA as the standard;	GeneID (NCBI): 4176	Recommended Dilutions: WB 1:1000-1:6000 IP 0.5-4.0 ug for IP and 1:1000-1:4000 for WB
Source: Rabbit	Full Name: minichromosome maintenance complex component 7	IHC 1:50-1:500 IF 1:50-1:500
Isotype: IgG	Calculated MW: 81 kDa	
Immunogen Catalog Number: AG1730	Observed MW: 81 kDa	

Applications

Tested Applications: FC, IF, IHC, IP, WB, ELISA	Positive Controls: WB: NIH/3T3 cells, A431 cells, HeLa cells, MCF-7 cells IP: NIH/3T3 cells, IHC: human lung cancer tissue, human lymphoma tissue IF: NIH/3T3 cells,
Cited Applications: CoIP, IHC, WB	
Species Specificity: human, mouse, rat	
Cited Species: human, mouse	
Note-IHC: suggested antigen retrieval with TE buffer pH 9.0; (*) Alternatively, antigen retrieval may be performed with citrate buffer pH 6.0	

Background Information

MCM7, also named as CDC47 homolog or P1.1-MCM3, is a 719 amino acid protein, which belongs to the MCM family. MCM7 acts as component of the MCM2-7 complex (MCM complex) which is the putative replicative helicase essential for 'once per cell cycle' DNA replication initiation and elongation in eukaryotic cells. The MCM2-7 complex participates in the pre-replication complex formation and exhibits helicase activity which makes DNA unwind, and resulting in recruitment of DNA polymerases and initiation of DNA replication and elongation [PMID: 29463213]. An immunohistochemical study has shown that MCM7 is increased in HCC. Silencing of MCM7 with shRNA inhibits the malignant behavior of HCC cells via cell cycle arrest and apoptosis [[PMID: 29463213].

Notable Publications

Author	Pubmed ID	Journal	Application
Yi Zhu	30365225	Proteomics Clin Appl	IHC
Hongyuan Song	29908342	Biomaterials	WB
Yinan Ma	29285216	Oncotarget	WB, CoIP

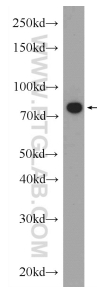
Storage

Storage:
Store at -20°C. Stable for one year after shipment.
Storage Buffer:
PBS with 0.1% sodium azide and 50% glycerol pH 7.3.
Aliquoting is unnecessary for -20°C storage

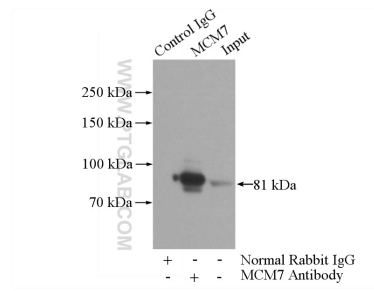
For technical support and original validation data for this product please contact:
T: 1 (888) 4PTGLAB (1-888-478-4522) (toll free in USA), or 1(312) 455-8498 (outside USA)
E: proteintech@ptglab.com
W: ptglab.com

This product is exclusively available under Proteintech Group brand and is not available to purchase from any other manufacturer.

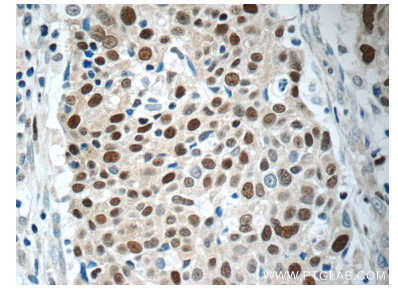
Selected Validation Data



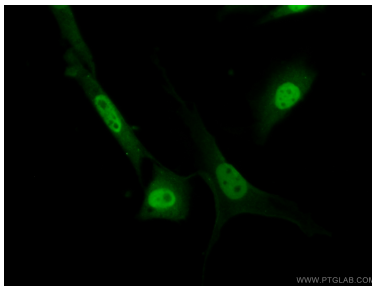
NIH/3T3 cells were subjected to SDS PAGE followed by western blot with 11225-1-AP (MCM7 Antibody) at dilution of 1:3000 incubated at room temperature for 1.5 hours.



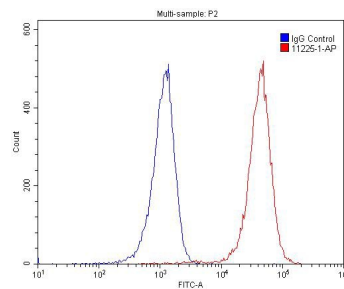
IP Result of anti-MCM7 (IP:11225-1-AP, 4 μ g; Detection:11225-1-AP 1:2000) with NIH/3T3 cells lysate 1600 μ g.



Immunohistochemical analysis of paraffin-embedded human lung cancer tissue slide using 11225-1-AP (MCM7 Antibody) at dilution of 1:200 (under 40x lens).



Immunofluorescent analysis of (10% Formaldehyde) fixed NIH/3T3 cells using 11225-1-AP (MCM7 antibody) at dilution of 1:50 and Alexa Fluor 488-conjugated AffiniPure Goat Anti-Rabbit IgG(H+L).



1 \times 10⁶ Raji cells were stained with 0.2 μ g MCM7 antibody (11225-1-AP, red) and control antibody (blue). Fixed with 4% PFA blocked with 3% BSA (30 min). Alexa Fluor 488-conjugated AffiniPure Goat Anti-Rabbit IgG(H+L) with dilution 1:1500.