

For Research Use Only

# MIRO2 Polyclonal antibody

Catalog Number: 11237-1-AP

Featured Product

27 Publications



## Basic Information

### Catalog Number:

11237-1-AP

### Size:

150ul, Concentration: 700 ug/ml by Nanodrop;

### Source:

Rabbit

### Isotype:

IgG

### Immunogen Catalog Number:

AG1752

### GenBank Accession Number:

BC014942

### GeneID (NCBI):

89941

### UNIPROT ID:

Q8IXI1

### Full Name:

ras homolog gene family, member T2

### Calculated MW:

68 kDa

### Observed MW:

80 kDa

### Purification Method:

Antigen affinity purification

### Recommended Dilutions:

WB: 1:1000-1:10000

IP: 0.5-4.0 ug for 1.0-3.0 mg of total protein lysate

IHC: 1:50-1:500

IF/ICC: 1:50-1:500

## Applications

### Tested Applications:

WB, IHC, IF/ICC, IP, ELISA

### Cited Applications:

WB, IHC, IF, IP, CoIP

### Species Specificity:

human, mouse

### Cited Species:

human, mouse, rat, monkey

**Note-IHC: suggested antigen retrieval with TE buffer pH 9.0; (\*) Alternatively, antigen retrieval may be performed with citrate buffer pH 6.0**

### Positive Controls:

**WB:** HEK-293T cells, human kidney tissue, mouse heart tissue, L02 cells, HepG2 cells, human testis tissue, human heart tissue, K-562 cells, HeLa cells

**IP:** L02 cells,

**IHC:** human colon tissue, human kidney tissue, human heart tissue, human lung cancer tissue

**IF/ICC:** HeLa cells,

## Background Information

RHOT2 (Ras homolog gene family, member T2), also known as ARHT2, RASL or MIRO-2 (mitochondrial Rho GTPase 2), is a 618 amino acid single-pass type IV membrane protein as a member of the Rho family of GTPases. It is localized to the outer mitochondrial membrane and plays a role in mitochondrial trafficking and fusion-fission dynamics. RHOT2 is ubiquitously expressed with highest levels found in pancreas, heart, kidney and skeletal muscle. MIRO2 is highly phosphorylated at basal conditions, as evidenced by an immunoreactive band that electrophoretically migrates 7 kDa higher (~75 kDa) compared to its predicted molecular weight (68 kDa) (PMID: 28556983).

## Notable Publications

Author	Pubmed ID	Journal	Application
Crystal A Lee	28924745	Protein Cell	WB, IF
Matthew Yoke Wui Ng	36270994	Nat Commun	WB
Tatiana Brustovetsky	34685760	Cells	WB, CoIP

## Storage

### Storage:

Store at -20°C. Stable for one year after shipment.

### Storage Buffer:

PBS with 0.02% sodium azide and 50% glycerol, pH7.3

Aliquoting is unnecessary for -20°C storage

\*\*\* 20ul sizes contain 0.1% BSA

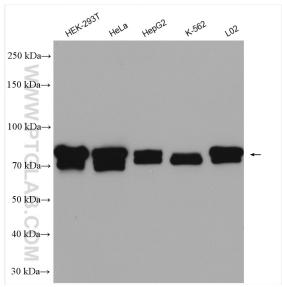
For technical support and original validation data for this product please contact:

T: 1 (888) 4PTGLAB (1-888-478-4522) (toll free in USA), or 1(312) 455-8498 (outside USA)

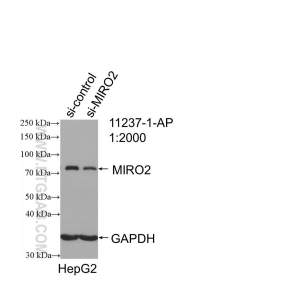
E: [proteintech@ptglab.com](mailto:proteintech@ptglab.com)  
W: [ptglab.com](http://ptglab.com)

This product is exclusively available under Proteintech Group brand and is not available to purchase from any other manufacturer.

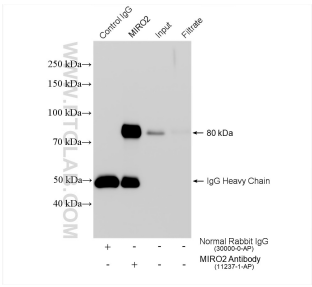
Selected Validation Data



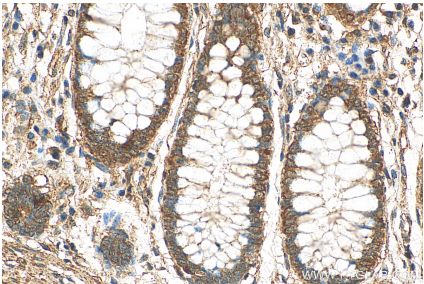
Various lysates were subjected to SDS PAGE followed by western blot with 11237-1-AP (MIRO2 antibody) at dilution of 1:10000 incubated at room temperature for 1.5 hours.



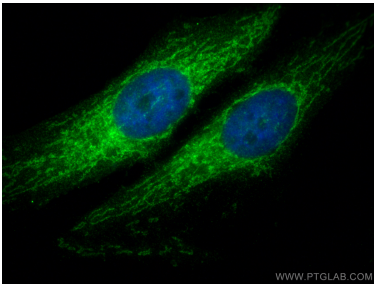
WB result of MIRO2 antibody (11237-1-AP; 1:2000; incubated at room temperature for 1.5 hours) with sh-Control and sh-MIRO2 transfected HepG2 cells.



IP result of anti-MIRO2 (IP:11237-1-AP, 4ug; Detection:11237-1-AP 1:4000) with L02 cells lysate 3080 ug.



Immunohistochemical analysis of paraffin-embedded human colon tissue slide using 11237-1-AP (MIRO2 antibody) at dilution of 1:200 (under 40x lens). Heat mediated antigen retrieval with Tris-EDTA buffer (pH 9.0).



Immunofluorescent analysis of (4% PFA) fixed HeLa cells using MIRO2 antibody (11237-1-AP) at dilution of 1:200 and Multi-rAb Coralite® Plus 488-Goat Anti-Rabbit Recombinant Secondary Antibody (H+L) (RGAR002).