

ERO1LB

Polyclonal ANTIBODY

Catalog Number: 11261-2-AP

Featured Product

5 Publications

Basic Information

Catalog Number:
11261-2-AP

Size:
20 µg/150 µl

Source:
Rabbit

Isotype:
IgG

Purification Method:
Antigen affinity purification

Immunogen Catalog Number:
AG1776

GenBank Accession Number:
BC032823

GeneID (NCBI):
56605

Full Name:
ERO1-like beta (S. cerevisiae)

Calculated MW:
54 kDa

Observed MW:
40-50 kDa

Recommended Dilutions:

WB 1:500-1:2000

IHC 1:20-1:200

IF 1:50-1:500

Applications

Tested Applications:

IF, IHC, WB, ELISA

Cited Applications:

WB

Species Specificity:

human,mouse,rat

Cited Species:

human, mouse

Note: suggested antigen retrieval with TE buffer pH 9.0; (*) Alternatively, antigen retrieval may be performed with citrate buffer pH 6.0

Positive Controls:

WB : HeLa cells; human placenta tissue

IHC : human pancreas cancer tissue; human oesophagus tissue, human small intestine tissue

IF : HeLa cells;

Background Information

Endoplasmic reticulum oxidoreductases (Eros) are essential for the formation of disulfide bonds. Mammals express two related Ero proteins, Ero1L alpha and Ero1L beta. The two homologous proteins can form homodimers and mixed heterodimers. ERO1-L α and - β are highly expressed in organs with a high demand for secretion, consistent with their roles in oxidative folding of ER proteins.

Notable Publications

Author	Pubmed ID	Journal	Application
Okamoto Yuji Y	23847051	Hum Mbl Genet	WB
Galligan James J JJ	22829816	J Toxicol	WB
Norio Takei	28839225	Sci Rep	WB

Storage

Storage:

Store at -20°C. Stable for one year after shipment.

Storage Buffer:

PBS with 0.1% sodium azide and 50% glycerol pH 7.3.

Aliquoting is unnecessary for -20°C storage

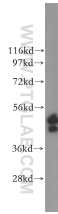
For technical support and original validation data for this product please contact:

T: 1 (888) 4PTGLAB (1-888-478-4522) (toll free in USA), or 1(312) 455-8498 (outside USA)

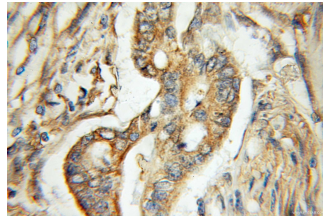
E: proteintech@ptglab.com
W: ptglab.com

This product is exclusively available under Proteintech Group brand and is not available to purchase from any other manufacturer.

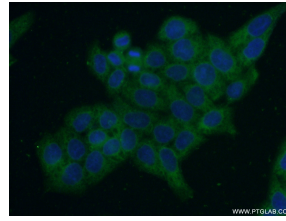
Selected Validation Data



HeLa cells were subjected to SDS PAGE followed by western blot with 11261-2-AP(ERO1LB antibody) at dilution of 1:500 incubated at room temperature for 1.5 hours



Immunohistochemical of paraffin-embedded human pancreas cancer using 11261-2-AP(ERO1LB antibody) at dilution of 1:50 (under 40x lens)



Immunofluorescent analysis of (-20) Ethanol fixed HeLa cells using 11261-2-AP(ERO1LB antibody) at dilution of 1:50 and Alexa Fluor 488-conjugated AffiniPure Goat Anti-Rabbit IgG(H+L)