

For Research Use Only

ATG3 Polyclonal ANTIBODY



Catalog Number: 11262-2-AP **5 Publications**

Basic Information

Catalog Number: 11262-2-AP	GenBank Accession Number: BC024221	Purification Method: Antigen affinity purification
Size: 150UL, Concentration: 133 µg/ml by Bradford method using BSA as the standard;	GeneID (NCBI): 64422	Recommended Dilutions: WB 1:500-1:1000 IHC 1:20-1:200 IF 1:20-1:200
Source: Rabbit	Full Name: ATG3 autophagy related 3 homolog (S. cerevisiae)	
Isotype: IgG	Calculated MW: 36 kDa	
Immunogen Catalog Number: AG1785	Observed MW: 36-40 kDa	

Applications

Tested Applications: IF, IHC, WB, ELISA	Positive Controls: WB: mouse kidney tissue, IHC: human kidney tissue, IF: HEK-293 cells,
Cited Applications: WB	
Species Specificity: human, mouse, rat	
Cited Species: human, mouse, rat	
Note-IHC: suggested antigen retrieval with TE buffer pH 9.0; (*) Alternatively, antigen retrieval may be performed with citrate buffer pH 6.0	

Background Information

Notable Publications

Author	Pubmed ID	Journal	Application
Tsung-Chang Tsai	29587440	Mar Drugs	WB
Yin-Ling Xiu	28423647	Oncotarget	WB
Bo Wu	28703811	Cell Death Dis	WB

Storage

Storage:
Store at -20°C. Stable for one year after shipment.
Storage Buffer:
PBS with 0.1% sodium azide and 50% glycerol pH 7.3.
Aliquoting is unnecessary for -20°C storage

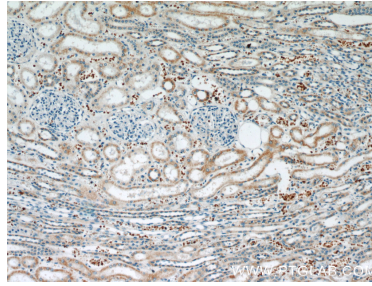
For technical support and original validation data for this product please contact:
T: 1 (888) 4PTGLAB (1-888-478-4522) (toll free in USA), or 1(312) 455-8498 (outside USA)
E: proteintech@ptglab.com
W: ptglab.com

This product is exclusively available under Proteintech Group brand and is not available to purchase from any other manufacturer.

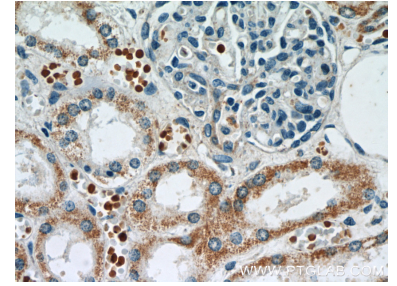
Selected Validation Data



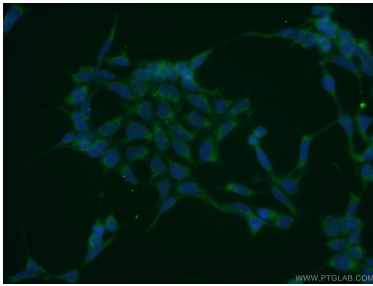
mouse kidney tissue were subjected to SDS PAGE followed by western blot with 11262-2-AP (ATG3 antibody) at dilution of 1:300 incubated at room temperature for 1.5 hours.



Immunohistochemical analysis of paraffin-embedded human kidney slide using 11262-2-AP (ATG3 Antibody) at dilution of 1:50.



Immunohistochemical analysis of paraffin-embedded human kidney slide using 11262-2-AP (ATG3 Antibody) at dilution of 1:50.



Immunofluorescent analysis of HEK-293 cells using 11262-2-AP (ATG3 antibody) at dilution of 1:50 and Alexa Fluor 488-conjugated AffiniPure Goat Anti-Rabbit IgG(H+L).