

For Research Use Only

Tom22 Polyclonal antibody

Catalog Number: 11278-1-AP **5 Publications**



Basic Information

Catalog Number: 11278-1-AP	GenBank Accession Number: BC009363	Purification Method: Antigen affinity purification
Size: 150ul , Concentration: 400 µg/ml by Nanodrop and 267 µg/ml by Bradford method using BSA as the standard;	GeneID (NCBI): 56993	Recommended Dilutions: WB 1:500-1:2000 IHC 1:50-1:500 IF 1:50-1:500
Source: Rabbit	Full Name: translocase of outer mitochondrial membrane 22 homolog (yeast)	
Isotype: IgG	Calculated MW: 15 kDa	
Immunogen Catalog Number: AG1797	Observed MW: 15-22 kDa	

Applications

Tested Applications: IF, IHC, WB, ELISA	Positive Controls: WB : HeLa, K-562 cells, HeLa cells, mouse liver tissue
Cited Applications: IF, WB	IHC : human colon cancer tissue,
Species Specificity: human, mouse, rat	IF : HepG2 cells,
Cited Species: human	

Note-IHC: suggested antigen retrieval with TE buffer pH 9.0; (*) Alternatively, antigen retrieval may be performed with citrate buffer pH 6.0

Background Information

Notable Publications

Author	Pubmed ID	Journal	Application
Bo Zhou	30287942	Cell Res	WB
Shan Xu	26564796	Mol Biol Cell	WB
Fan Yu	35504898	Cell Discov	WB,IF

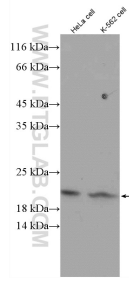
Storage

Storage:
Store at -20°C. Stable for one year after shipment.
Storage Buffer:
PBS with 0.02% sodium azide and 50% glycerol pH 7.3.
Aliquoting is unnecessary for -20°C storage

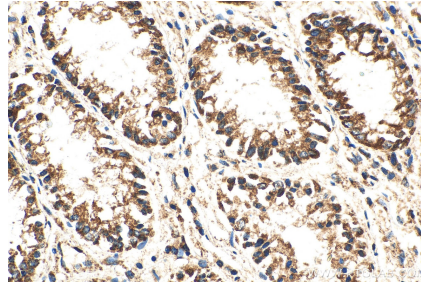
For technical support and original validation data for this product please contact:
T: 1 (888) 4PTGLAB (1-888-478-4522) (toll free in USA), or 1(312) 455-8498 (outside USA)
E: proteintech@ptglab.com
W: ptglab.com

This product is exclusively available under Proteintech Group brand and is not available to purchase from any other manufacturer.

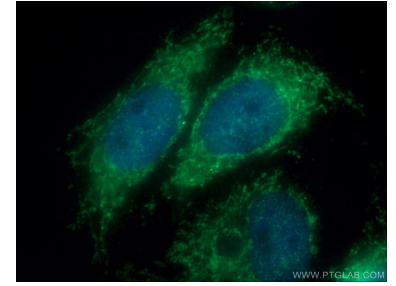
Selected Validation Data



HeLa and K-562 cells were subjected to SDS PAGE followed by western blot with 11278-1-AP (Tom22 antibody) at dilution of 1:1500 incubated at room temperature for 1.5 hours.



Immunohistochemical analysis of paraffin-embedded human colon cancer tissue slide using 11278-1-AP (Tom22 antibody) at dilution of 1:200 (under 40x lens). Heat mediated antigen retrieval with Tris-EDTA buffer (pH 9.0).



Immunofluorescent analysis of (4% PFA) fixed HepG2 cells using 11278-1-AP (Tom22 antibody) at dilution of 1:50 and Alexa Fluor 488-conjugated AffiniPure Goat Anti-Rabbit IgG(H+L).