

For Research Use Only

# Ribosomal protein L4 Polyclonal antibody

Catalog Number: 11302-1-AP

Featured Product

38 Publications



## Basic Information

### Catalog Number:

11302-1-AP

### Size:

150ul, Concentration: 900 ug/ml by Nanodrop;

### Source:

Rabbit

### Isotype:

IgG

### Immunogen Catalog Number:

AG1828

### GenBank Accession Number:

BC009888

### GeneID (NCBI):

6124

### UNIPROT ID:

P36578

### Full Name:

ribosomal protein L4

### Calculated MW:

48 kDa

### Observed MW:

48 kDa

### Purification Method:

Antigen affinity purification

### Recommended Dilutions:

WB: 1:2000-1:10000

IP: 0.5-4.0 ug for 1.0-3.0 mg of total protein lysate

IHC: 1:50-1:500

IF/ICC: 1:200-1:800

FC (Intra): 0.20 ug per 10<sup>6</sup> cells in a 100 µl suspension

## Applications

### Tested Applications:

WB, IHC, IF/ICC, FC (Intra), IP, ELISA

### Cited Applications:

WB, IF, IP, RIP

### Species Specificity:

human, mouse, rat

### Cited Species:

human, mouse, rat, arabidopsis, rice

**Note-IHC: suggested antigen retrieval with TE buffer pH 9.0; (\*) Alternatively, antigen retrieval may be performed with citrate buffer pH 6.0**

### Positive Controls:

WB: HeLa cells, rat skeletal muscle tissue, HepG2 cells, MCF-7 cells

IP: HeLa cells,

IHC: human lymphoma tissue,

IF/ICC: HeLa cells,

FC (Intra): HeLa cells,

## Background Information

60S ribosomal protein L4 is encoded by RPL4 (or RPL1) gene. RPL4 is a component of 60S subunit of ribosome, and belongs to the L4E family. By interacting with c-Myb, RPL4 plays a important role in c-myc expression in response to growth factor and nutritional signals. Recently RPL4 was reported to be able to increase efficiency of viral recoding sequence.

## Notable Publications

Author	Pubmed ID	Journal	Application
Bartoli Kristen MKM	21795388	Mol Biol Cell	WB
Zekun Wang	34653226	PLoS Pathog	WB
Annie Hien	33054857	Mol Autism	WB

## Storage

### Storage:

Store at -20°C. Stable for one year after shipment.

### Storage Buffer:

PBS with 0.02% sodium azide and 50% glycerol, pH7.3

Aliquoting is unnecessary for -20°C storage

\*\*\* 20ul sizes contain 0.1% BSA

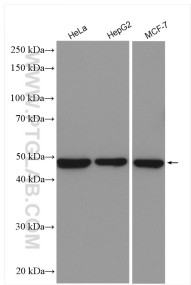
For technical support and original validation data for this product please contact:

T: 1 (888) 4PTGLAB (1-888-478-4522) (toll free in USA), or 1(312) 455-8498 (outside USA)

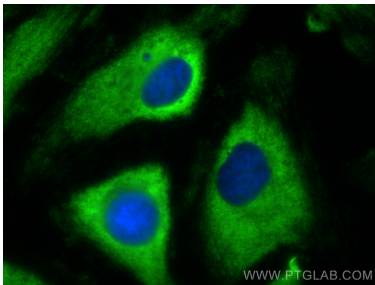
E: [proteintech@ptglab.com](mailto:proteintech@ptglab.com)  
W: [ptglab.com](http://ptglab.com)

This product is exclusively available under Proteintech Group brand and is not available to purchase from any other manufacturer.

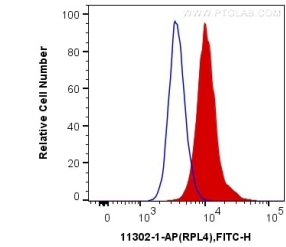
Selected Validation Data



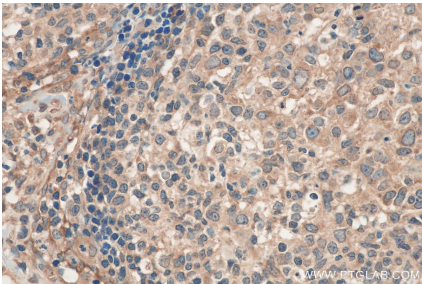
Various lysates were subjected to SDS PAGE followed by western blot with 11302-1-AP (Ribosomal protein L4 antibody) at dilution of 1:5000 incubated at room temperature for 1.5 hours.



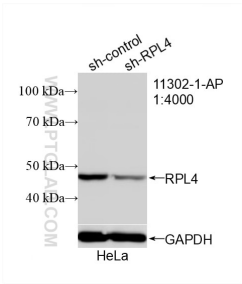
Immunofluorescent analysis of (-20°C Ethanol) fixed HeLa cells using Ribosomal protein L4 antibody (11302-1-AP) at dilution of 1:400 and Multi-rAb CoraLite® Plus 488-Goat Anti-Rabbit Recombinant Secondary Antibody (H+L) (RGAR002).



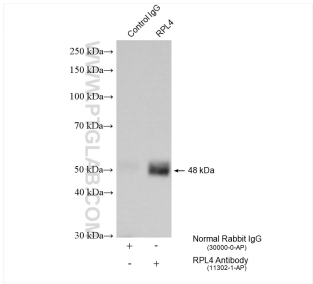
1X10<sup>6</sup> HeLa cells were intracellularly stained with 0.2 ug Anti-Human Ribosomal protein L4 (11302-1-AP) and CoraLite®488-Conjugated AffiniPure Goat Anti-Rabbit IgG(H+L) at dilution 1:1000 (red), or 0.2 ug Control Antibody. Cells were fixed with 4% PFA and permeabilized with Flow Cytometry Perm Buffer (PF00011-C).



Immunohistochemical analysis of paraffin-embedded human lymphoma tissue slide using 11302-1-AP (Ribosomal protein L4 antibody) at dilution of 1:200 (under 40x lens). Heat mediated antigen retrieval with Tris-EDTA buffer (pH 9.0).



WB result of Ribosomal protein L4 antibody (11302-1-AP; 1:4000; incubated at room temperature for 1.5 hours) with sh-Control and sh-Ribosomal protein L4 transfected HeLa cells.



IP result of anti-Ribosomal protein L4 (IP:11302-1-AP, 4ug; Detection:11302-1-AP 1:6000) with HeLa cells lysate 1050 ug.