

For Research Use Only

# IRF3 Polyclonal antibody

Catalog Number: 11312-1-AP

Featured Product

231 Publications



## Basic Information

### Catalog Number:

11312-1-AP

### Size:

150ul, Concentration: 600 ug/ml by Nanodrop;

### Source:

Rabbit

### Isotype:

IgG

### Immunogen Catalog Number:

AG1858

### GenBank Accession Number:

BC009395

### GeneID (NCBI):

3661

### UNIPROT ID:

Q14653

### Full Name:

interferon regulatory factor 3

### Calculated MW:

47 kDa

### Observed MW:

50-60 kDa

### Purification Method:

Antigen affinity purification

### Recommended Dilutions:

WB: 1:5000-1:50000

IP: 0.5-4.0 ug for 1.0-3.0 mg of total protein lysate

IHC: 1:50-1:200

IF/ICC: 1:200-1:800

## Applications

### Tested Applications:

WB, IHC, IF/ICC, IP, ELISA

### Cited Applications:

WB, IHC, IF, IP, CoIP, ChIP, RIP

### Species Specificity:

human

### Cited Species:

human, rat, pig, monkey, bovine, hamster, sheep

**Note-IHC: suggested antigen retrieval with TE buffer pH 9.0; (\*) Alternatively, antigen retrieval may be performed with citrate buffer pH 6.0**

### Positive Controls:

WB: HEK-293T cells, HCT 116 cells, HeLa cells, U-937 cells, human brain tissue, Jurkat cells, MCF-7 cells, MDA-MB-231 cells

IP: Jurkat cells,

IHC: human spleen tissue,

IF/ICC: HeLa cells,

## Background Information

The virul-induced expression of interferon(IFN) genes in infected cells implicate in the interplay of several constitutively expressed and virus-activated transcription factors. A family of IFN regulatory factors(IRFs) have been shown to have a role in the transcription of IFN genes as well as IFN-stimulated genes. IRF3 is a novel key transcriptional regulator of type I IFN-dependent immune responses and involves in the innate immune response against DNA and RNA viruses, by binding to the promoters of IFN. It located in the cytoplasm of uninfected cells in an inactive form, and following viral infection, double-stranded RNA (dsRNA), or toll-like receptor (TLR) signaling, could be phosphorylated by IKKε and TBK1 kinases. This induces a conformational change, leading to its dimerization, nuclear localization and association with CREB binding protein (CREBBP) to form dsRNA-activated factor 1 (DRAF1), a complex which activates the transcription of the type I IFN and ISG genes. IRF3 exists some isoforms with MV 47-49 kDa, 33 kDa and 12-16 kDa.

## Notable Publications

Author	Pubmed ID	Journal	Application
Tianxiao Xu	34571002	J Invest Dermatol	WB
Meidi Gu	25239187	Cell Signal	WB
Zongyi Bo	32933581	Vet Res	WB,IF,CoIP,ChIP

## Storage

### Storage:

Store at -20°C. Stable for one year after shipment.

### Storage Buffer:

PBS with 0.02% sodium azide and 50% glycerol, pH7.3

Aliquoting is unnecessary for -20°C storage

\*\*\* 20ul sizes contain 0.1% BSA

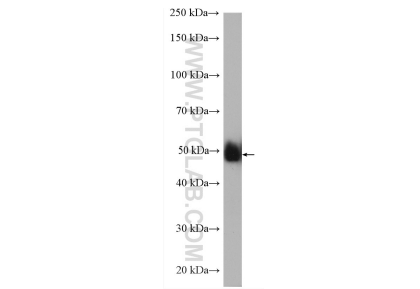
For technical support and original validation data for this product please contact:

T: 1 (888) 4PTGLAB (1-888-478-4522) (toll free in USA), or 1(312) 455-8498 (outside USA)

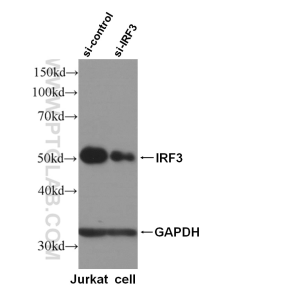
E: proteintech@ptglab.com  
W: ptglab.com

This product is exclusively available under Proteintech Group brand and is not available to purchase from any other manufacturer.

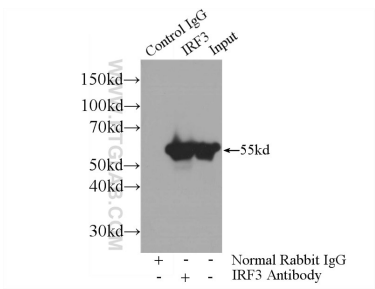
Selected Validation Data



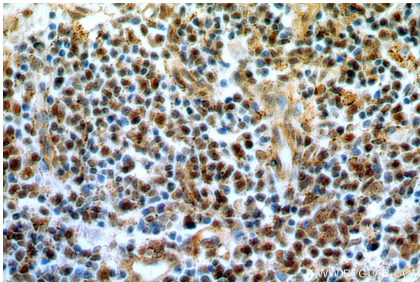
HeLa cells were subjected to SDS PAGE followed by western blot with 11312-1-AP (IRF3 antibody) at dilution of 1:5000 incubated at room temperature for 1.5 hours.



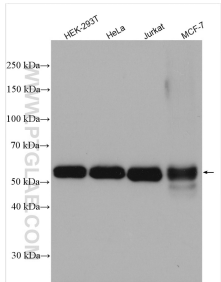
WB result of IRF3 specific antibody (11312-1-AP, 1:5000) with si-control and si-IRF3 transfected Jurkat cells.



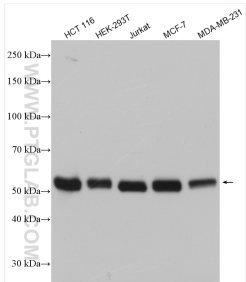
IP result of anti-IRF3 (IP:11312-1-AP, 3ug; Detection:11312-1-AP 1:1000) with Jurkat cells lysate 2400ug.



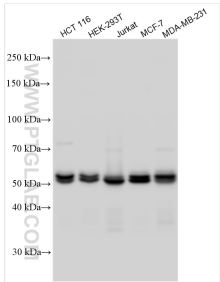
Immunohistochemical analysis of paraffin-embedded human spleen using 11312-1-AP (IRF3 antibody) at dilution of 1:50 (under 40x lens).



Various lysates were subjected to SDS PAGE followed by western blot with 11312-1-AP (IRF3 antibody) at dilution of 1:10000 incubated at room temperature for 1.5 hours.



Various lysates were subjected to SDS PAGE followed by western blot with 11312-1-AP (IRF3 antibody) at dilution of 1:20000 incubated at room temperature for 1.5 hours.



Various lysates were subjected to SDS PAGE followed by western blot with 11312-1-AP (IRF3 antibody) at dilution of 1:20000 incubated at room temperature for 1.5 hours.



Immunofluorescent analysis of (4% PFA) fixed HeLa cells using IRF3 antibody (11312-1-AP) at dilution of 1:400 and CoraLite®594-Conjugated Goat Anti-Rabbit IgG(H+L) (SA00013-4).