

For Research Use Only

RAB35 Polyclonal antibody

Catalog Number: 11329-2-AP

Featured Product

49 Publications



Basic Information

Catalog Number:

11329-2-AP

Size:

150ul, Concentration: 350 ug/ml by Nanodrop;

Source:

Rabbit

Isotype:

IgG

Immunogen Catalog Number:

AG1872

GenBank Accession Number:

BC015931

GeneID (NCBI):

11021

UNIPROT ID:

Q15286

Full Name:

RAB35, member RAS oncogene family

Calculated MW:

201 aa, 23 kDa

Observed MW:

23 kDa

Purification Method:

Antigen affinity purification

Recommended Dilutions:

WB: 1:1000-1:6000

IP: 0.5-4.0 ug for 1.0-3.0 mg of total protein lysate

IHC: 1:50-1:500

IF/ICC: 1:200-1:800

Applications

Tested Applications:

WB, IHC, IF/ICC, IP, ELISA

Cited Applications:

WB, IHC, IF, IP, CoIP

Species Specificity:

human, mouse, rat

Cited Species:

human, mouse, rat, pig, canine

Note-IHC: suggested antigen retrieval with TE buffer pH 9.0; (*) Alternatively, antigen retrieval may be performed with citrate buffer pH 6.0

Positive Controls:

WB: A431 cells, A375 cells, human brain tissue, HeLa cells, MCF-7 cells, RAW 264.7 cells, mouse brain tissue, rat brain tissue

IP: mouse brain tissue,

IHC: human breast cancer tissue, human liver tissue, human brain tissue

IF/ICC: U-87 MG cells,

Background Information

RAB35 is a member of the small GTPase superfamily. Like the other Rab proteins, RAB35 has 2 consecutive cysteine residues at its C terminus, and this region is thought to be involved in membrane association. Rab35 is found on the cell surface and endosomes, where it has been proposed to play a role in recycling of the transferrin and other receptors.

Notable Publications

Author	Pubmed ID	Journal	Application
Akane Imai	21832089	J Biol Chem	WB
Sara R Guerreiro	36056171	Mol Psychiatry	WB
Elisabetta Argenzio	25344254	J Cell Sci	WB

Storage

Storage:

Store at -20°C. Stable for one year after shipment.

Storage Buffer:

PBS with 0.02% sodium azide and 50% glycerol, pH7.3

Aliquoting is unnecessary for -20°C storage

*** 20ul sizes contain 0.1% BSA

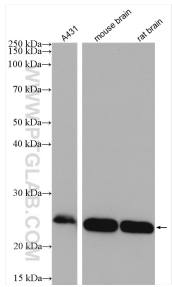
For technical support and original validation data for this product please contact:

T: 1 (888) 4PTGLAB (1-888-478-4522) (toll free in USA), or 1(312) 455-8498 (outside USA)

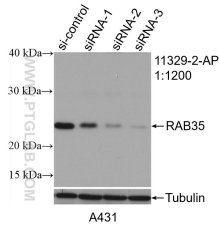
E: proteintech@ptglab.com
W: ptglab.com

This product is exclusively available under Proteintech Group brand and is not available to purchase from any other manufacturer.

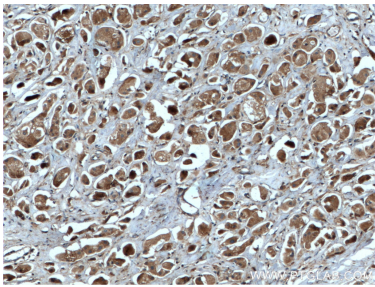
Selected Validation Data



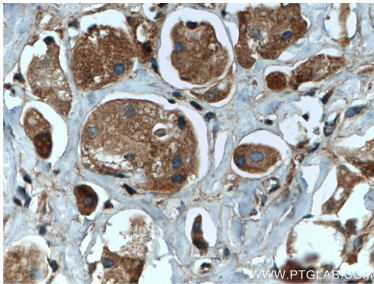
Various lysates were subjected to SDS PAGE followed by western blot with 11329-2-AP (RAB35 antibody) at dilution of 1:3000 incubated at room temperature for 1.5 hours.



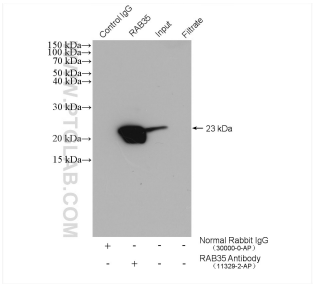
WB result of RAB35 antibody (11329-2-AP; 1:1200; incubated at room temperature for 1.5 hours) with sh-Control and sh-RAB35 transfected A431 cells.



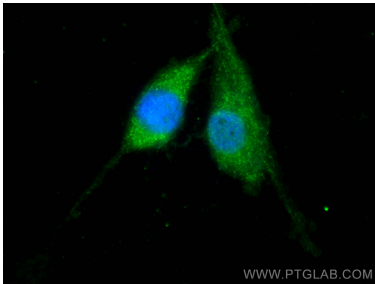
Immunohistochemical analysis of paraffin-embedded human breast cancer tissue slide using 11329-2-AP (RAB35 antibody) at dilution of 1:200 (under 10x lens. Heat mediated antigen retrieval with Tris-EDTA buffer (pH 9.0).



Immunohistochemical analysis of paraffin-embedded human breast cancer tissue slide using 11329-2-AP (RAB35 antibody) at dilution of 1:200 (under 40x lens. Heat mediated antigen retrieval with Tris-EDTA buffer (pH 9.0).



IP result of anti-RAB35 (IP:11329-2-AP, 4ug; Detection:11329-2-AP 1:600) with mouse brain tissue lysate 2400 ug.



Immunofluorescent analysis of (-20°C Ethanol) fixed U-87 MG cells using RAB35 antibody (11329-2-AP) at dilution of 1:400 and CoraLite®488-Conjugated Goat Anti-Rabbit IgG(H+L).