

For Research Use Only

ENT1 Polyclonal antibody

Catalog Number: 11337-1-AP

Featured Product

35 Publications



Basic Information

Catalog Number:

11337-1-AP

Size:

150ul, Concentration: 300 µg/ml by Nanodrop and 160 µg/ml by Bradford method using BSA as the standard;

Source:

Rabbit

Isotype:

IgG

Immunogen Catalog Number:

AG1881

GenBank Accession Number:

BC008954

GeneID (NCBI):

2030

UNIPROT ID:

Q99808

Full Name:

solute carrier family 29 (nucleoside transporters), member 1

Calculated MW:

50 kDa

Observed MW:

62 kDa

Purification Method:

Antigen affinity purification

Recommended Dilutions:

WB: 1:500-1:1000

IP: 0.5-4.0 µg for 1.0-3.0 mg of total protein lysate

IHC: 1:20-1:200

Applications

Tested Applications:

WB, IP, IHC, ELISA

Cited Applications:

WB, IHC, IF

Species Specificity:

human, mouse, rat

Cited Species:

human, mouse, rat

Note-IHC: suggested antigen retrieval with TE buffer pH 9.0; (*) Alternatively, antigen retrieval may be performed with citrate buffer pH 6.0

Positive Controls:

WB: mouse brain tissue, human liver tissue, human lung tissue, human spleen tissue, mouse kidney tissue, mouse liver tissue, mouse lung tissue, mouse testis tissue

IP: mouse brain tissue,

IHC: human breast cancer tissue,

Background Information

ENT1 (equilibrative nucleoside transporter 1; also known as SLC29A1) is a ubiquitous protein located at the cell membrane and is a major transporter responsible for the cellular uptake and release of endogenous nucleosides such as adenosine, and nucleoside analogs used in chemotherapy. The predicted molecular weight of ENT1 is 50 kDa, while heavier 54-62 kDa band may be observed due to the glycosylation (16448802, 11850433, 16111480). A smaller novel splice variant of the mouse ENT1 has also been identified, which generates a protein of 35-40 kDa (18413666).

Notable Publications

Author	Pubmed ID	Journal	Application
Jung Won Chun	34682775	J Clin Med	IHC
Mingyang Liu	31711924	Gastroenterology	WB
Shangnan Dai	31689601	Biomed Pharmacother	WB

Storage

Storage:

Store at -20°C. Stable for one year after shipment.

Storage Buffer:

PBS with 0.02% sodium azide and 50% glycerol, pH7.3

Aliquoting is unnecessary for -20°C storage

*** 20ul sizes contain 0.1% BSA

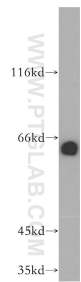
For technical support and original validation data for this product please contact:

T: 1 (888) 4PTGLAB (1-888-478-4522) (toll free in USA), or 1(312) 455-8498 (outside USA)

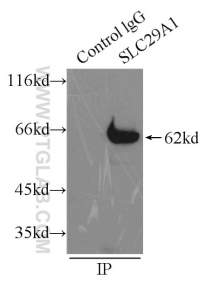
E: proteintech@ptglab.com
W: ptglab.com

This product is exclusively available under Proteintech Group brand and is not available to purchase from any other manufacturer.

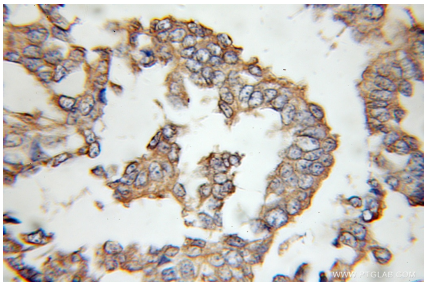
Selected Validation Data



mouse brain tissue were subjected to SDS PAGE followed by western blot with 11337-1-AP (ENT1 antibody) at dilution of 1:500 incubated at room temperature for 1.5 hours.



IP result of anti-ENT1 (IP:11337-1-AP, 3ug; Detection:11337-1-AP 1:400) with mouse brain tissue lysate 8000ug.



Immunohistochemical analysis of paraffin-embedded human breast cancer using 11337-1-AP (ENT1 antibody) at dilution of 1:100 (under 10x lens).