

For Research Use Only

TLE3 Polyclonal antibody

Catalog Number: 11372-1-AP

Featured Product

23 Publications



Basic Information

Catalog Number:

11372-1-AP

Size:

150ul, Concentration: 400 ug/ml by Nanodrop;

Source:

Rabbit

Isotype:

IgG

Immunogen Catalog Number:

AG1930

GenBank Accession Number:

BC015729

GeneID (NCBI):

7090

UNIPROT ID:

Q04726

Full Name:

transducin-like enhancer of split 3 (E(sp1) homolog, Drosophila)

Calculated MW:

772 aa, 83 kDa

Observed MW:

83 kDa

Purification Method:

Antigen affinity purification

Recommended Dilutions:

WB: 1:1000-1:6000

IP: 0.5-4.0 ug for 1.0-3.0 mg of total protein lysate

IHC: 1:50-1:500

IF/ICC: 1:200-1:800

Applications

Tested Applications:

WB, IHC, IF/ICC, IP, ELISA

Cited Applications:

WB, IHC, IF, CoIP, ChIP

Species Specificity:

human, mouse, rat

Cited Species:

human, mouse

Note-IHC: suggested antigen retrieval with TE buffer pH 9.0; (*) Alternatively, antigen retrieval may be performed with citrate buffer pH 6.0

Positive Controls:

WB: HeLa cells, HEK-293 cells

IP: HepG2 cells,

IHC: human breast cancer tissue,

IF/ICC: HepG2 cells,

Background Information

TLE3, also named as KIAA1547 and ESG3, belongs to the WD repeat Groucho/TLE family. It is a transcriptional corepressor that binds to a number of transcription factors. It inhibits the transcriptional activation mediated by CTNNB1 and TCF family members in Wnt signaling. The effects of full-length TLE family members may be modulated by association with dominant-negative AES. TLE3 is a member of the transducin-like enhancer of split (TLE) family of proteins that have been implicated in the tumorigenesis and classification of sarcomas. It is a candidate biomarker of response to taxane

Notable Publications

Author	Pubmed ID	Journal	Application
Mohsan Saeed	32997711	PLoS Pathog	WB
Francisco José Ortega	25249007	J Mol Med (Berl)	WB
Ying Ren	31645658	Acta Pharmacol Sin	WB

Storage

Storage:

Store at -20°C. Stable for one year after shipment.

Storage Buffer:

PBS with 0.02% sodium azide and 50% glycerol, pH7.3

Aliquoting is unnecessary for -20°C storage

*** 20ul sizes contain 0.1% BSA

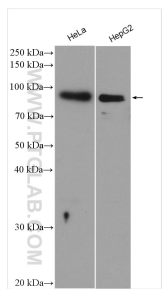
For technical support and original validation data for this product please contact:

T: 1 (888) 4PTGLAB (1-888-478-4522) (toll free in USA), or 1(312) 455-8498 (outside USA)

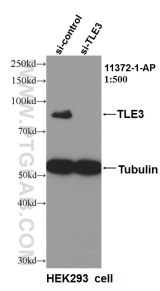
E: proteintech@ptglab.com
W: ptglab.com

This product is exclusively available under Proteintech Group brand and is not available to purchase from any other manufacturer.

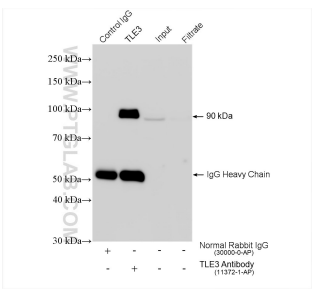
Selected Validation Data



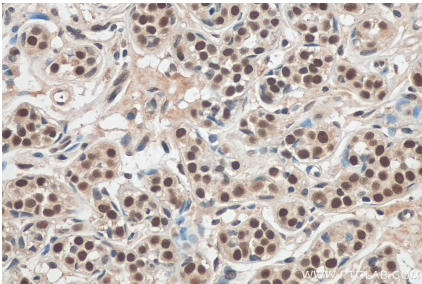
HeLa cells were subjected to SDS PAGE followed by western blot with 11372-1-AP (TLE3 antibody) at dilution of 1:3000 incubated at room temperature for 1.5 hours.



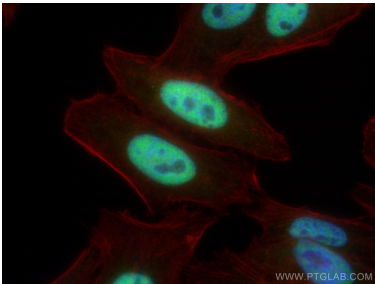
WB result of TLE3 antibody (11372-1-AP, 1:500) with si-Control and si-TLE3 transfected HEK293 cells.



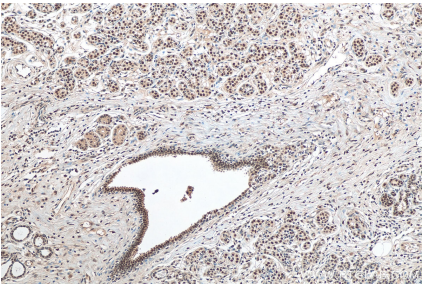
IP result of anti-TLE3 (IP:11372-1-AP, 4ug; Detection:11372-1-AP 1:2000) with HepG2 cells lysate 1080 ug.



Immunohistochemical analysis of paraffin-embedded human breast cancer tissue slide using 11372-1-AP (TLE3 antibody) at dilution of 1:200 (under 40x lens). Heat mediated antigen retrieval with Tris-EDTA buffer (pH 9.0).



Immunofluorescent analysis of (4% PFA) fixed HepG2 cells using TLE3 antibody (11372-1-AP) at dilution of 1:400 and CoraLite®488-Conjugated AffiniPure Goat Anti-Rabbit IgG(H+L), CL594-phalloidin (red).



Immunohistochemical analysis of paraffin-embedded human breast cancer tissue slide using 11372-1-AP (TLE3 antibody) at dilution of 1:200 (under 10x lens). Heat mediated antigen retrieval with Tris-EDTA buffer (pH 9.0).