

For Research Use Only

UBE2D1/2/3/4 Polyclonal antibody

Catalog Number: 11373-1-AP



Basic Information

Catalog Number:

11373-1-AP

Size:

150ul, Concentration: 550 µg/ml by Nanodrop and 133 µg/ml by Bradford method using BSA as the standard;

Source:

Rabbit

Isotype:

IgG

Immunogen Catalog Number:

AG1932

GenBank Accession Number:

BC015997

GeneID (NCBI):

7321

Full Name:

ubiquitin-conjugating enzyme E2D 1 (UBC4/5 homolog, yeast)

Calculated MW:

17 kDa

Observed MW:

17 kDa

Purification Method:

Antigen affinity purification

Recommended Dilutions:

WB 1:2000-1:12000

IP 0.5-4.0 ug for IP and 1:200-1:1000 for WB

IHC 1:20-1:200

Applications

Tested Applications:

IHC, IP, WB, ELISA

Species Specificity:

human, mouse, rat

Note-IHC: suggested antigen retrieval with TE buffer pH 9.0; (*) Alternatively, antigen retrieval may be performed with citrate buffer pH 6.0

Positive Controls:

WB: HeLa cells, NIH/3T3 cells, Jurkat cells, mpuse heart tissue, mouse thymus tissue

IP: Jurkat cells,

IHC: human prostate cancer tissue,

Background Information

Ubiquitination is a post-translational modification pathway or is part of the specific protein-degradation pathway by the 26S proteasome. Ubiquitination of a target protein involves multistep enzymatic reaction catalyzed by a cascade of enzymes including Ub-activating enzymes (E1s), Ub-conjugating enzymes (E2s) and Ub ligases (E3s) (PMID: 23542885). UBE2D family, which has 4 members named as UBE2D1/2/3/4, is an E2 ubiquitin-conjugating enzyme family in the ubiquitin-proteasome system. This antibody can recognize all the four members of UBE2D due to the high homology.

Storage

Storage:

Store at -20°C. Stable for one year after shipment.

Storage Buffer:

PBS with 0.02% sodium azide and 50% glycerol pH 7.3.

Aliquoting is unnecessary for -20°C storage

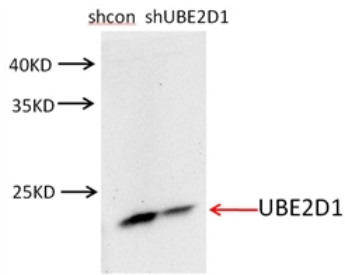
For technical support and original validation data for this product please contact:

T: 1 (888) 4PTGLAB (1-888-478-4522) (toll free in USA), or 1(312) 455-8498 (outside USA)

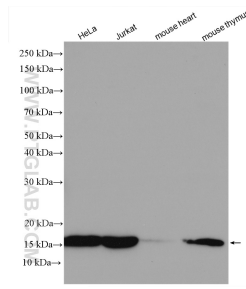
E: proteintech@ptglab.com
W: ptglab.com

This product is exclusively available under Proteintech Group brand and is not available to purchase from any other manufacturer.

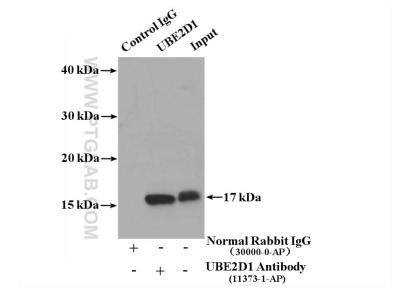
Selected Validation Data



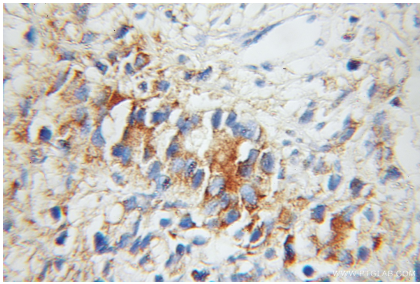
NIH/3T3 cells were subjected to SDS PAGE followed by western blot with 11373-1-AP (UBE2D1-Specific antibody) at dilution of 1:500.



Various lysates were subjected to SDS PAGE followed by western blot with 11373-1-AP (UBE2D1/2/3/4 antibody) at dilution of 1:6000 incubated at room temperature for 1.5 hours.



IP result of anti-UBE2D1-Specific (IP:11373-1-AP, 4ug; Detection:11373-1-AP 1:300) with Jurkat cells lysate 2600 ug.



Immunohistochemical analysis of paraffin-embedded human prostate cancer using 11373-1-AP (UBE2D1-Specific antibody) at dilution of 1:50 (under 10x lens).