

For Research Use Only

FH Polyclonal ANTIBODY



Catalog Number: 11375-1-AP **7 Publications**

Basic Information

Catalog Number:

11375-1-AP

Size:

150UL, Concentration: 133 µg/ml by Bradford method using BSA as the standard;

Source:

Rabbit

Isotype:

IgG

Immunogen Catalog Number:

AG1934

GenBank Accession Number:

BC003108

GeneID (NCBI):

2271

Full Name:

fumarate hydratase

Calculated MW:

510 aa, 55 kDa

Observed MW:

45-50 kDa

Purification Method:

Antigen affinity purification

Recommended Dilutions:

WB 1:500-1:2000

IP 0.5-4.0 µg for IP and 1:500-1:2000 for WB

IHC 1:20-1:200

IF 1:20-1:200

Applications

Tested Applications:

IF, IHC, IP, WB, ELISA

Cited Applications:

IHC, WB

Species Specificity:

human, mouse, rat

Cited Species:

C. elegans, human, rat

Note-IHC: suggested antigen retrieval with TE buffer pH 9.0; (*) Alternatively, antigen retrieval may be performed with citrate buffer pH 6.0

Positive Controls:

WB: HeLa cells, A431 cells, HEK-293 cells, HepG2 cells, human liver tissue, human placenta tissue, LO2 cells, mouse liver tissue, rat liver tissue

IP: mouse liver tissue,

IHC: human ovary tumor tissue, human placenta tissue

IF: HeLa cells,

Background Information

Fumarate hydratase, or fumarase, is an enzymatic component of the tricarboxylic acid cycle, catalyzing the conversion of fumarate to malate. It belongs to the class-II fumarase/aspartase family. This protein has 2 isoforms produced by alternative initiation.

Notable Publications

Author	Pubmed ID	Journal	Application
Yongyan Sun	30307357	Int J Radiat Biol	WB
Xiaoyu Ma	25301052	Nat Commun	WB
Zongjuan Ming	26767050	Thorac Cancer	IHC

Storage

Storage:

Store at -20°C. Stable for one year after shipment.

Storage Buffer:

PBS with 0.1% sodium azide and 50% glycerol pH 7.3.

Aliquoting is unnecessary for -20°C storage

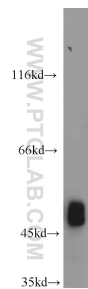
For technical support and original validation data for this product please contact:

T: 1 (888) 4PTGLAB (1-888-478-4522) (toll free in USA), or 1(312) 455-8498 (outside USA)

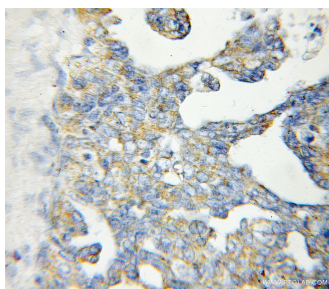
E: proteintech@ptglab.com
W: ptglab.com

This product is exclusively available under Proteintech Group brand and is not available to purchase from any other manufacturer.

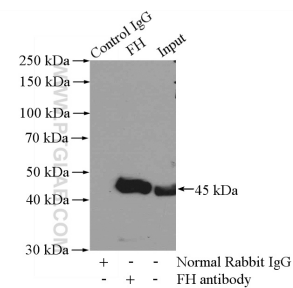
Selected Validation Data



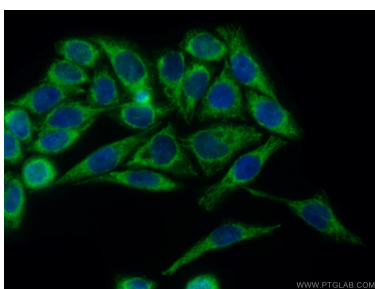
HeLa cells were subjected to SDS PAGE followed by western blot with 11375-1-AP (FH antibody) at dilution of 1:1000 incubated at room temperature for 1.5 hours.



Immunohistochemical analysis of paraffin-embedded human ovary tumor using 11375-1-AP (FH antibody) at dilution of 1:50 (under 40x lens).



IP Result of anti-FH (IP:11375-1-AP, 4ug; Detection:11375-1-AP 1:1000) with mouse liver tissue lysate 4000ug.



Immunofluorescent analysis of (10% Formaldehyde) fixed HeLa cells using 11375-1-AP (FH antibody) at dilution of 1:50 and Alexa Fluor 488-conjugated AffiniPure Goat Anti-Rabbit IgG(H+L).