

For Research Use Only

# ECH1 Polyclonal ANTIBODY



Catalog Number: 11385-1-AP

2 Publications

## Basic Information

Catalog Number:  
11385-1-AP

Size:  
38 µg/150 µl

Source:  
Rabbit

Isotype:  
IgG

Purification Method:  
Antigen affinity purification

Immunogen Catalog Number:  
AG1931

GenBank Accession Number:  
BC017408

GeneID (NCBI):  
1891

Full Name:  
enoyl Coenzyme A hydratase 1, peroxisomal

Calculated MW:  
328aa, 36 kDa

Observed MW:  
30-36 kDa

Recommended Dilutions:

WB 1:500-1:2000

IHC 1:20-1:200

IF 1:10-1:100

## Applications

Tested Applications:

IF, IHC, WB, ELISA

Cited Applications:

WB

Species Specificity:

human,mouse,rat

Cited Species:

mouse

**Note: suggested antigen retrieval with TE buffer pH 9.0; (\*) Alternatively, antigen retrieval may be performed with citrate buffer pH 6.0**

Positive Controls:

WB : mouse liver tissue; HepG2 cells, Jurkat cells, K-562 cells, L02 cells, mouse heart tissue

IHC : human pancreas cancer tissue;

IF : HepG2 cells;

## Background Information

### Notable Publications

Author	Pubmed ID	Journal	Application
Mguel A Lanaspá	29533924	J Clin Invest	WB
Ishimoto Takuji T	23813872	Hepatology	WB

## Storage

Storage:

Store at -20°C. Stable for one year after shipment.

Storage Buffer:

PBS with 0.1% sodium azide and 50% glycerol pH 7.3.

Aliquoting is unnecessary for -20°C storage

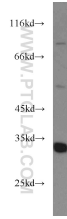
For technical support and original validation data for this product please contact:

T: 1 (888) 4PTGLAB (1-888-478-4522) (toll free in USA), or 1(312) 455-8498 (outside USA)

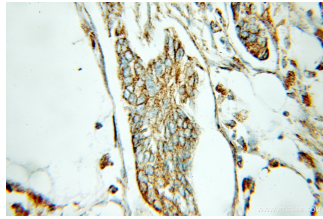
E: [proteintech@ptglab.com](mailto:proteintech@ptglab.com)  
W: [ptglab.com](http://ptglab.com)

This product is exclusively available under Proteintech Group brand and is not available to purchase from any other manufacturer.

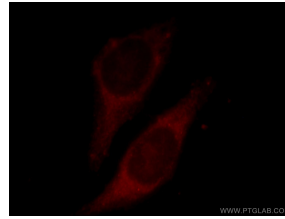
## Selected Validation Data



mouse liver tissue were subjected to SDS PAGE followed by western blot with 11385-1-AP/ECH1 antibody (at dilution of 1:500 incubated at room temperature for 1.5 hours



Immunohistochemical of paraffin-embedded human pancreas cancer using 11385-1-AP/ECH1 antibody (at dilution of 1:100 (under 10x lens)



Immunofluorescent analysis of HepG2 cells, using ECH1 antibody 11385-1-AP at 1:25 dilution and Rhodamine-labeled goat anti-rabbit IgG (red).