

For Research Use Only

Septin 2 Polyclonal antibody

Catalog Number: 11397-1-AP

Featured Product

31 Publications



Basic Information

Catalog Number:

11397-1-AP

Size:

150ul, Concentration: 450 ug/ml by Nanodrop and 293 ug/ml by Bradford method using BSA as the standard;

Source:

Rabbit

Isotype:

IgG

Immunogen Catalog Number:

AG1946

GenBank Accession Number:

BC014455

GeneID (NCBI):

4735

UNIPROT ID:

Q15019

Full Name:

septin 2

Calculated MW:

41 kDa

Observed MW:

45 kDa

Purification Method:

Antigen affinity purification

Recommended Dilutions:

WB: 1:1000-1:4000

IP: 0.5-4.0 ug for 1.0-3.0 mg of total protein lysate

IHC: 1:50-1:500

IF/ICC: 1:50-1:500

FC (Intra): 0.40 ug per 10⁶ cells in a 100 µl suspension

Applications

Tested Applications:

WB, IHC, IF/ICC, FC (Intra), IP, ELISA

Cited Applications:

WB, IF, IP

Species Specificity:

human, mouse, rat

Cited Species:

human, mouse, rat, canine

Note-IHC: suggested antigen retrieval with TE buffer pH 9.0; (*) Alternatively, antigen retrieval may be performed with citrate buffer pH 6.0

Positive Controls:

WB: mouse brain tissue, mouse heart tissue, HeLa cells, human skeletal muscle tissue, rat brain tissue, C6 cells, HEK-293 cells, K-562 cells, Jurkat cells

IP: mouse brain tissue,

IHC: human liver cancer tissue, human colon tissue, human pancreas cancer tissue

IF/ICC: HepG2 cells, hTERT-RPE1 cells and Mouse embryonic fibroblasts

FC (Intra): MCF-7 cells,

Background Information

Septin-2, also named as DIFF6, KIAA0158, NEDD5 and SEPT2, belongs to the septin family. It is a filament-forming cytoskeletal GTPase. SEPT2 is required for normal organization of the actin cytoskeleton. It plays a role in ciliogenesis and collective cell movements. SEPT2 is coordinated expression with SEPT6 and SEPT7. (PMID:21737677)

Notable Publications

Author	Pubmed ID	Journal	Application
Sellin Mikael E ME	21737677	Mol Biol Cell	WB
Larisa Volceanov	25293760	MBio	WB, IF, IP
Wei Zhang	33200802	Mol Med Rep	WB

Storage

Storage:

Store at -20°C. Stable for one year after shipment.

Storage Buffer:

PBS with 0.02% sodium azide and 50% glycerol, pH7.3

Aliquoting is unnecessary for -20°C storage

*** 20ul sizes contain 0.1% BSA

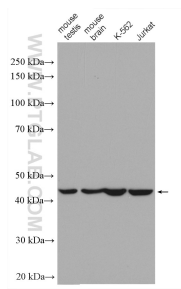
For technical support and original validation data for this product please contact:

T: 1 (888) 4PTGLAB (1-888-478-4522) (toll free in USA), or 1(312) 455-8498 (outside USA)

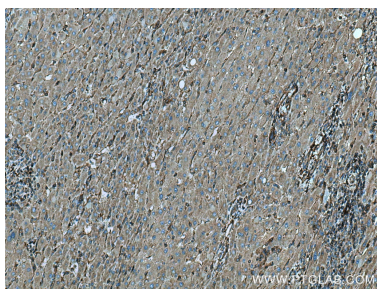
E: proteintech@ptglab.com
W: ptglab.com

This product is exclusively available under Proteintech Group brand and is not available to purchase from any other manufacturer.

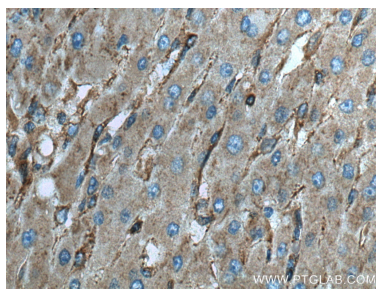
Selected Validation Data



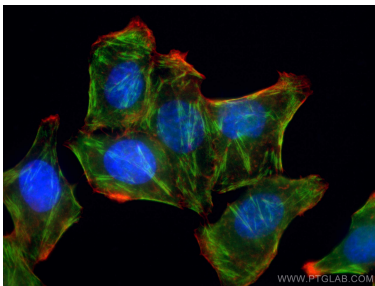
Various lysates were subjected to SDS PAGE followed by western blot with 11397-1-AP (Septin 2 antibody) at dilution of 1:2000 incubated at room temperature for 1.5 hours.



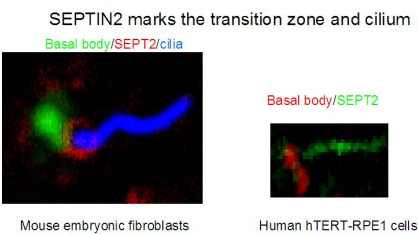
Immunohistochemical analysis of paraffin-embedded human liver cancer tissue slide using 11397-1-AP (Septin 2 antibody) at dilution of 1:200 (under 10x lens). Heat mediated antigen retrieval with Tris-EDTA buffer (pH 9.0).



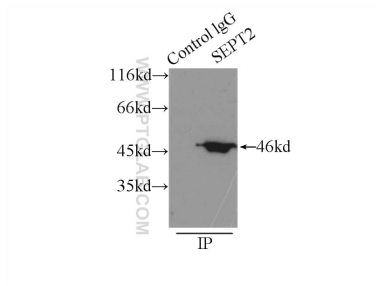
Immunohistochemical analysis of paraffin-embedded human liver cancer tissue slide using 11397-1-AP (Septin 2 antibody) at dilution of 1:200 (under 40x lens). Heat mediated antigen retrieval with Tris-EDTA buffer (pH 9.0).



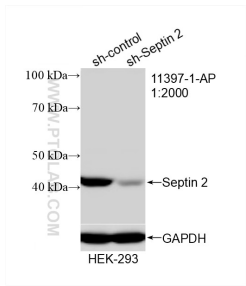
Immunofluorescent analysis of (4% PFA) fixed HepG2 cells using 11397-1-AP (Septin 2 antibody), at dilution of 1:200 and CoraLite®488-Conjugated AffiniPure Goat Anti-Rabbit IgG(H+L).



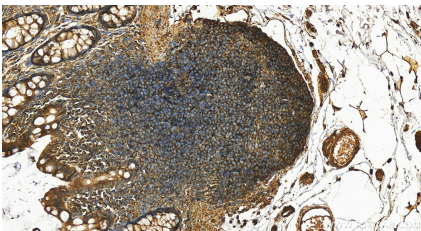
IF result from Dr. Kevin Corbit. Septin 2 (11397-1-AP) marks the transition zone and cilium of Human hTERT-RPE1 cells and Mouse embryonic fibroblasts.



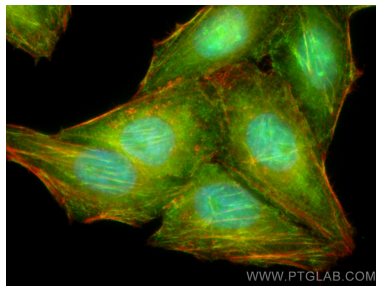
IP result of anti-Septin 2 (IP:11397-1-AP, 3ug; Detection:11397-1-AP 1:1000) with mouse brain tissue lysate 5000ug.



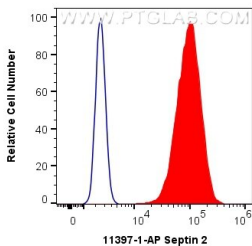
WB result of Septin 2 antibody (11397-1-AP; 1:2000; incubated at room temperature for 1.5 hours) with sh-Control and sh-Septin 2 transfected HEK-293 cells.



Immunohistochemical analysis of paraffin-embedded human colon tissue slide using 11397-1-AP (Septin 2 antibody) at dilution of 1:400 (under 20x lens). Heat mediated antigen retrieval with Tris-EDTA buffer (pH 9.0).



Immunofluorescent analysis of (4% PFA) fixed HepG2 cells using Septin 2 antibody (11397-1-AP) at dilution of 1:400 and CoraLite®488-Conjugated AffiniPure Goat Anti-Rabbit IgG(H+L), CL594-Phalloidin (red).



1X10⁶ MCF-7 cells were intracellularly stained with 0.4 ug Anti-Human Septin 2 (11397-1-AP) and CoraLite®488-Conjugated AffiniPure Goat Anti-Rabbit IgG(H+L) at dilution 1:1000 (red), or 0.4 ug Isotype Control. Cells were fixed with 4% PFA and permeabilized with Flow Cytometry Perm Buffer (PF00011-C).