

For Research Use Only

# GRK6 Polyclonal ANTIBODY



Catalog Number: 11439-1-AP

Featured Product

1 Publications

## Basic Information

Catalog Number:  
11439-1-AP

Size:  
22 µg/150 µl

Source:  
Rabbit

Isotype:  
IgG

Purification Method:  
Antigen affinity purification

Immunogen Catalog Number:  
AG1992

GenBank Accession Number:  
BC017272

GeneID (NCBI):  
2870

Full Name:  
G protein-coupled receptor kinase 6

Calculated MW:  
66 kDa

Observed MW:  
66 kDa

Recommended Dilutions:

WB 1:500-1:2000

IP 0.5-4.0 µg for IP and 1:500-1:1000 for WB

IHC 1:50-1:500

## Applications

Tested Applications:

IHC, IP, WB, ELISA

Cited Applications:

WB

Species Specificity:

human,mouse,rat

Cited Species:

human

**Note: suggested antigen retrieval with TE buffer pH 9.0; (\*) Alternatively, antigen retrieval may be performed with citrate buffer pH 6.0**

Positive Controls:

WB : HEK-293 cells; human kidney tissue

IP : HEK-293 cells;

IHC : human renal cell carcinoma tissue;

## Background Information

### Notable Publications

Author	Pubmed ID	Journal	Application
Fan Yang	26347956	Nat Commun	WB

## Storage

Storage:

Store at -20°C. Stable for one year after shipment.

Storage Buffer:

PBS with 0.1% sodium azide and 50% glycerol pH 7.3.

Aliquoting is unnecessary for -20°C storage

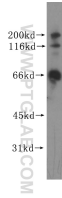
For technical support and original validation data for this product please contact:

T: 1 (888) 4PTGLAB (1-888-478-4522) (toll free in USA), or 1(312) 455-8498 (outside USA)

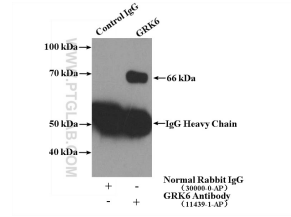
E: [proteintech@ptglab.com](mailto:proteintech@ptglab.com)  
W: [ptglab.com](http://ptglab.com)

This product is exclusively available under Proteintech Group brand and is not available to purchase from any other manufacturer.

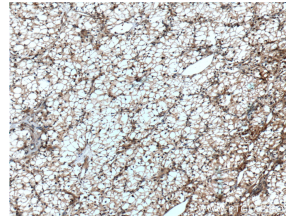
## Selected Validation Data



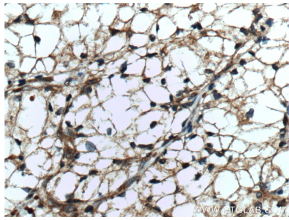
HEK-293 cells were subjected to SDS PAGE followed by western blot with 11439-1-AP (GRK6 antibody) at dilution of 1:500 incubated at room temperature for 1.5 hours



IP Result of anti-GRK6 (IP: 11439-1-AP, 4ug; Detection: 11439-1-AP 1:500) with HEK-293 cells lysate 1120ug.



Immunohistochemistry of paraffin-embedded human renal cell carcinoma tissue slide using 11439-1-AP (GRK6 Antibody) at dilution of 1:100 (under 10x lens), heat mediated antigen retrieved with Tris-EDTA buffer (pH9).



Immunohistochemistry of paraffin-embedded human renal cell carcinoma tissue slide using 11439-1-AP (GRK6 Antibody) at dilution of 1:100 (under 40x lens), heat mediated antigen retrieved with Tris-EDTA buffer (pH9).