

For Research Use Only

Human IgA Heavy Chain Polyclonal antibody

Catalog Number: 11449-1-AP

15 Publications



Basic Information

Catalog Number:

11449-1-AP

Size:

150ul, Concentration: 850 ug/ml by Nanodrop;

Source:

Rabbit

Isotype:

IgG

Immunogen Catalog Number:

AG2007

GenBank Accession Number:

BC016369

GeneID (NCBI):

3493

Full Name:

immunoglobulin heavy constant alpha 1

Calculated MW:

496 aa, 53 kDa

Observed MW:

53 kDa

Purification Method:

Antigen affinity purification

Recommended Dilutions:

WB: 1:500-1:2000

IHC: 1:5000-1:20000

IF-P: 1:200-1:800

FC (Intra): 0.40 ug per 10⁶ cells in a 100 µl suspension

Applications

Tested Applications:

WB, IHC, IF-P, ELISA

Cited Applications:

WB, IHC, IF

Species Specificity:

human

Cited Species:

human, mouse

Note-IHC: suggested antigen retrieval with TE buffer pH 9.0; (*) Alternatively, antigen retrieval may be performed with citrate buffer pH 6.0

Positive Controls:

WB: human plasma tissue, human lung tissue

IHC: human tonsillitis tissue,

IF-P: human tonsillitis tissue,

FC (Intra): Ramos cells,

Background Information

Ig alpha is the major immunoglobulin class in body secretions. It may serve both to defend against local infection and to prevent access of foreign antigens to the general immunologic system. This antibody recognizes the Chain C region of human Ig alpha-1 (IGHA1).

Notable Publications

Author	Pubmed ID	Journal	Application
Airu Liu	36118029	Front Cell Infect Microbiol	IHC
Yan Yan	33188798	J Infect	IHC
Anne Kathrin Wessig	35296708	Sci Rep	WB

Storage

Storage:

Store at -20°C. Stable for one year after shipment.

Storage Buffer:

PBS with 0.02% sodium azide and 50% glycerol, pH7.3

Aliquoting is unnecessary for -20°C storage

*** 20ul sizes contain 0.1% BSA

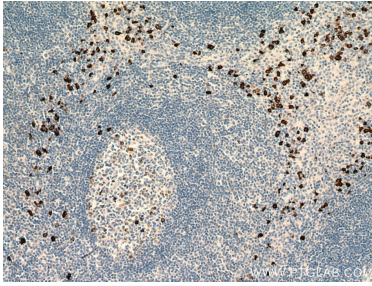
For technical support and original validation data for this product please contact:

T: 1 (888) 4PTGLAB (1-888-478-4522) (toll free in USA), or 1(312) 455-8498 (outside USA)

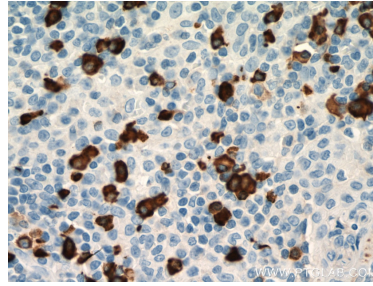
E: proteintech@ptglab.com
W: ptglab.com

This product is exclusively available under Proteintech Group brand and is not available to purchase from any other manufacturer.

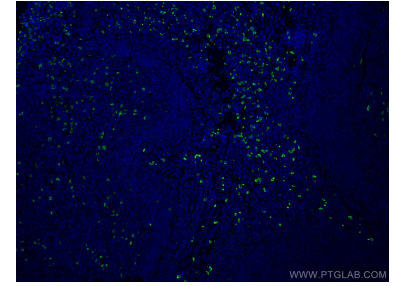
Selected Validation Data



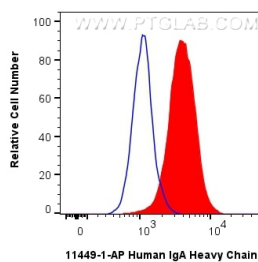
Immunohistochemical analysis of paraffin-embedded human tonsillitis tissue slide using 11449-1-AP (Human IgA Heavy Chain antibody) at dilution of 1:10000 (under 10x lens. Heat mediated antigen retrieval with Tris-EDTA buffer (pH 9.0).



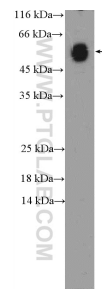
Immunohistochemical analysis of paraffin-embedded human tonsillitis tissue slide using 11449-1-AP (Human IgA Heavy Chain antibody) at dilution of 1:10000 (under 40x lens. Heat mediated antigen retrieval with Tris-EDTA buffer (pH 9.0).



Immunofluorescent analysis of (4% PFA) fixed human tonsillitis tissue using Human IgA Heavy Chain antibody (11449-1-AP) at dilution of 1:400 and CoraLite®488-Conjugated AffiniPure Goat Anti-Rabbit IgG(H+L).



1x10⁶ Ramos cells were intracellularly stained with 0.4 ug Human IgA Heavy Chain Polyclonal antibody (11449-1-AP) and CoraLite®488-Conjugated Goat Anti-Rabbit IgG(H+L) (SA00013-2) (red), or 0.4 ug Rabbit IgG control Rabbit PolyAb (30000-0-A-P) (blue). Cells were fixed with 4% PFA and permeabilized with Flow Cytometry Perm Buffer (PF00011-C).



human plasma (0.3 ug) were subjected to SDS PAGE followed by western blot with 11449-1-AP (Human IgA Heavy Chain antibody) at dilution of 1:1000. (1 Sec exposure) incubated at room temperature for 1.5 hours.