

For Research Use Only

CAPS1 Polyclonal antibody

Catalog Number: 11490-2-AP



Basic Information

Catalog Number:

11490-2-AP

Size:

150ul, Concentration: 300 ug/ml by Nanodrop and 300 ug/ml by Bradford method using BSA as the standard;

Source:

Rabbit

Isotype:

IgG

Immunogen Catalog Number:

AG1975

GenBank Accession Number:

BC015754

GeneID (NCBI):

8618

UNIPROT ID:

Q9ULU8

Full Name:

Ca⁺⁺-dependent secretion activator

Calculated MW:

1353 aa, 153 kDa

Observed MW:

150 kDa

Purification Method:

Antigen affinity purification

Recommended Dilutions:

WB 1:500-1:1000

IHC 1:50-1:500

IF/ICC 1:50-1:500

Applications

Tested Applications:

WB, IHC, IF/ICC, ELISA

Species Specificity:

human, mouse, rat

Note-IHC: suggested antigen retrieval with TE buffer pH 9.0; (*) Alternatively, antigen retrieval may be performed with citrate buffer pH 6.0

Positive Controls:

WB : rat brain tissue, mouse brain tissue

IHC : human pancreas tissue,

IF/ICC : SH-SY5Y cells,

Storage

Storage:

Store at -20°C. Stable for one year after shipment.

Storage Buffer:

PBS with 0.02% sodium azide and 50% glycerol, pH7.3

Aliquoting is unnecessary for -20°C storage

*** 20ul sizes contain 0.1% BSA

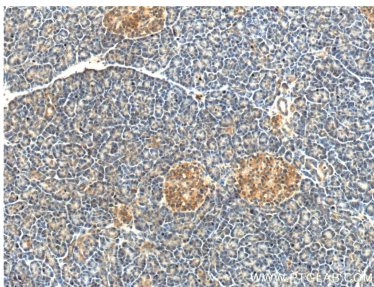
For technical support and original validation data for this product please contact:

T: 1 (888) 4PTGLAB (1-888-478-4522) (toll free in USA), or 1(312) 455-8498 (outside USA)

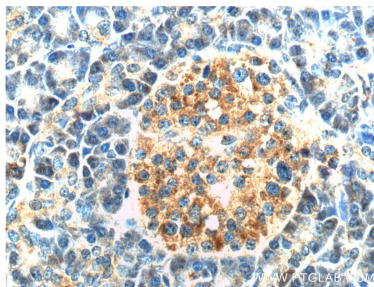
E: proteintech@ptglab.com
W: ptglab.com

This product is exclusively available under Proteintech Group brand and is not available to purchase from any other manufacturer.

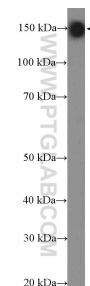
Selected Validation Data



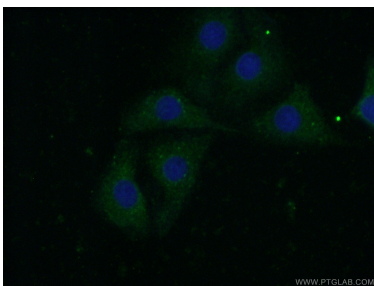
Immunohistochemical analysis of paraffin-embedded human pancreas tissue slide using 11490-2-AP (CAPS1 antibody at dilution of 1:200 (under 10x lens).



Immunohistochemical analysis of paraffin-embedded human pancreas tissue slide using 11490-2-AP (CAPS1 antibody at dilution of 1:200 (under 40x lens).



rat brain tissue were subjected to SDS PAGE followed by western blot with 11490-2-AP (CAPS1 antibody at dilution of 1:600 incubated at room temperature for 1.5 hours.



Immunofluorescent analysis of (-20°C Acetone) fixed SH-SY5Y cells using 11490-2-AP (CAPS1 antibody) at dilution of 1:50 and Alexa Fluor 488-conjugated AffiniPure Goat Anti-Rabbit IgG(H+L).