

For Research Use Only

Apelin Polyclonal antibody

Catalog Number: 11497-1-AP **5 Publications**



Basic Information

Catalog Number: 11497-1-AP	GenBank Accession Number: BC021104	Purification Method: Antigen affinity purification
Size: 150ul , Concentration: 200 µg/ml by Nanodrop and 133 µg/ml by Bradford method using BSA as the standard;	GeneID (NCBI): 8862	Recommended Dilutions: IHC 1:50-1:500
Source: Rabbit	Full Name: apelin	
Isotype: IgG	Calculated MW: 77 aa, 9 kDa	
Immunogen Catalog Number: AG2047		

Applications

Tested Applications: IHC, ELISA	Positive Controls: IHC : human breast cancer tissue, human colon cancer tissue, mouse heart tissue
Species Specificity: human, mouse, rat	
Cited Species: mouse, rat	
Note-IHC: suggested antigen retrieval with TE buffer pH 9.0; (*) Alternatively, antigen retrieval may be performed with citrate buffer pH 6.0	

Background Information

Apelin, isolated from bovine stomach tissue extracts, is recognized as the endogenous ligand of the angiotensin-like-receptor 1 (APJ), and the human orphan G-protein-coupled receptor. Apelin is widely expressed in various organs such as the heart, lung, kidney, liver, adipose tissue, gastrointestinal tract, brain, adrenal glands, endothelium, and human plasma. Apelin has been found to be a potent stimulator of cardiac contractility and may function in the regulation of the cardiovascular system. Apelin is also known to be involved in the maintenance of INS sensitivity and play an important role in liver disease.

Notable Publications

Author	Pubmed ID	Journal	Application
Zhi-Yong Xiao	29432881	Neuroscience	WB
Jun Seok Son	33264618	Cell Rep	
Ting-Ting Dai	30170158	Neuroscience	WB

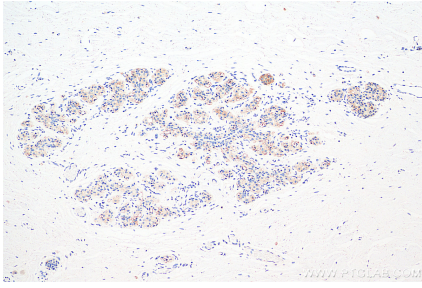
Storage

Storage:
Store at -20°C. Stable for one year after shipment.
Storage Buffer:
PBS with 0.02% sodium azide and 50% glycerol pH 7.3.
Aliquoting is unnecessary for -20°C storage

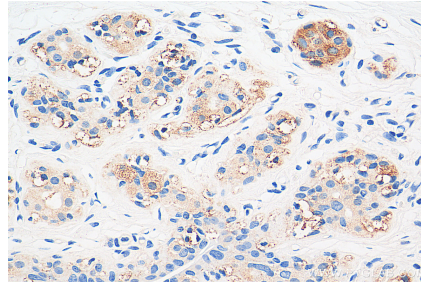
For technical support and original validation data for this product please contact:
T: 1 (888) 4PTGLAB (1-888-478-4522) (toll free in USA), or 1(312) 455-8498 (outside USA)
E: proteintech@ptglab.com
W: ptglab.com

This product is exclusively available under Proteintech Group brand and is not available to purchase from any other manufacturer.

Selected Validation Data



Immunohistochemical analysis of paraffin-embedded human breast cancer tissue slide using 11497-1-AP (Apelin antibody) at dilution of 1:200 (under 10x lens). Heat mediated antigen retrieval with Tris-EDTA buffer (pH 9.0).



Immunohistochemical analysis of paraffin-embedded human breast cancer tissue slide using 11497-1-AP (Apelin antibody) at dilution of 1:200 (under 40x lens). Heat mediated antigen retrieval with Tris-EDTA buffer (pH 9.0).