

For Research Use Only

# SP110 Polyclonal antibody

Catalog Number: 11502-1-AP **1 Publications**



## Basic Information

**Catalog Number:**

11502-1-AP

**Size:**

150ul, Concentration: 350 µg/ml by Nanodrop and 167 µg/ml by Bradford method using BSA as the standard;

**Source:**

Rabbit

**Isotype:**

IgG

**Immunogen Catalog Number:**

AG2042

**GenBank Accession Number:**

BC019059

**GeneID (NCBI):**

3431

**Full Name:**

SP110 nuclear body protein

**Calculated MW:**

689 aa, 79 kDa

**Observed MW:**

62-66 kDa

**Purification Method:**

Antigen affinity purification

**Recommended Dilutions:**

WB 1:2000-1:12000

IP 0.5-4.0 ug for IP and 1:500-1:1000 for WB

## Applications

**Tested Applications:**

IP, WB, ELISA

**Cited Applications:**

FC, IF, WB

**Species Specificity:**

human, mouse

**Cited Species:**

human

**Positive Controls:**

**WB:** A2780 cells, HeLa cells, human brain tissue, human testis tissue, Jurkat cells, K-562 cells, PC-3 cells, COLO 320 cells.

**IP:** HeLa cells,

## Background Information

### Notable Publications

Author	Pubmed ID	Journal	Application
Florian A Marquardsen	28825155	J Clin Immunol	WB,IF,FC

## Storage

**Storage:**

Store at -20°C. Stable for one year after shipment.

**Storage Buffer:**

PBS with 0.02% sodium azide and 50% glycerol pH 7.3.

Aliquoting is unnecessary for -20°C storage

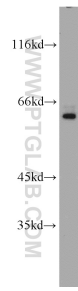
For technical support and original validation data for this product please contact:

T: 1 (888) 4PTGLAB (1-888-478-4522) (toll free in USA), or 1(312) 455-8498 (outside USA)

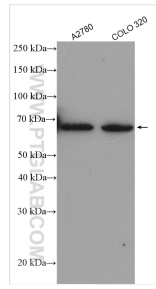
E: [proteintech@ptglab.com](mailto:proteintech@ptglab.com)  
W: [ptglab.com](http://ptglab.com)

**This product is exclusively available under Proteintech Group brand and is not available to purchase from any other manufacturer.**

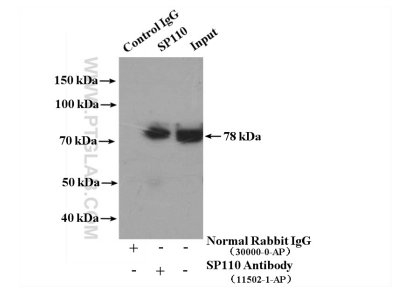
## Selected Validation Data



HeLa cells were subjected to SDS PAGE followed by western blot with 11502-1-AP (SP110 antibody) at dilution of 1:800 incubated at room temperature for 1.5 hours.



Various lysates were subjected to SDS PAGE followed by western blot with 11502-1-AP (SP110 antibody) at dilution of 1:6000 incubated at room temperature for 1.5 hours.



IP Result of anti-SP110 (IP:11502-1-AP, 4ug; Detection:11502-1-AP 1:800) with HeLa cells lysate 4000ug.