

FRS2

Polyclonal ANTIBODY

Catalog Number: 11503-1-AP

3 Publications

Basic Information

Catalog Number: 11503-1-AP	GenBank Accession Number: BC021562	Recommended Dilutions: WB 1:500-1:2000 IHC 1:20-1:200 IF 1:10-1:100
Size: 33 µg/150 µl	GeneID (NCBI): 10818	
Source: Rabbit	Full Name: fibroblast growth factor receptor substrate 2	
Isotype: IgG	Calculated MW: 60 kDa	
Purification Method: Antigen affinity purification	Observed MW: 68 kDa	
Immunogen Catalog Number: AG2052		

Applications

Tested Applications:

IF, IHC, WB, ELISA

Cited Applications:

IHC, WB

Species Specificity:

human,mouse,rat

Cited Species:

human

Note: suggested antigen retrieval with TE buffer pH 9.0; (*) Alternatively, antigen retrieval may be performed with citrate buffer pH 6.0

Positive Controls:

WB : MCF-7 cells; human brain tissue, NIH/3T3 cells

IHC : human prostate cancer tissue;

IF : MCF-7 cells;

Background Information

Fibroblast growth factor (FGF) receptor substrate 2 (FRS2) has an alternative name as SNT-1, it is an adapter protein that links activated FGR and NGF receptors to downstream signaling pathways. FGF receptor substrates (FRS2 and FRS3) are key adaptor proteins that mediate FGF-FGFR signalling in benign as well as malignant tissue. FRS2 is a 508 amino-acid protein, which is phosphorylated on tyrosine residues. The molecular weight of non-phosphorylated FRS2 is 57-68 kDa, but phosphorylated FRS2 is 80-90 kDa. Phosphorylation of FRS2 is associated with activation of a number of MAP kinases. Allele-specific regulation of FGFR2 mRNA expression with a mildly increased breast cancer risk has been reported.

Notable Publications

Author	Pubmed ID	Journal	Application
Wang Xiaoke X	21793095	Genes Chromosomes Cancer	WB
Sjors MKas	30115694	Cancer Res	WB
Zhang Keqiang K	23393200	Cancer Res	IHC

Storage

Storage:

Store at -20°C. Stable for one year after shipment.

Storage Buffer:

PBS with 0.1% sodium azide and 50% glycerol pH 7.3.

Aliquoting is unnecessary for -20°C storage

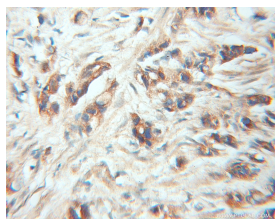
For technical support and original validation data for this product please contact:

T: 1 (888) 4PTGLAB (1-888-478-4522) (toll free in USA), or 1(312) 455-8498 (outside USA)

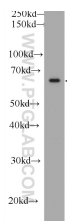
E: proteintech@ptglab.com
W: ptglab.com

This product is exclusively available under Proteintech Group brand and is not available to purchase from any other manufacturer.

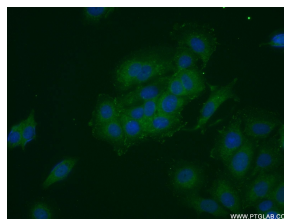
Selected Validation Data



Immunohistochemical of paraffin-embedded human prostate cancer using 11503-1-AP(FRS2 antibody) at dilution of 1:50 (under 10x lens)



MCF-7 cells were subjected to SDS PAGE followed by western blot with 11503-1-AP(FRS2 Antibody) at dilution of 1:1000 incubated at room temperature for 1.5 hours



Immunofluorescent analysis of MCF-7 cells using 11503-1-AP(FRS2 antibody) at dilution of 1:25 and Alexa Fluor 488-conjugated AffiniPure Goat Anti-Rabbit IgG(H+L)