

For Research Use Only

# YME1L1 Polyclonal antibody

Catalog Number: 11510-1-AP

Featured Product

83 Publications



## Basic Information

### Catalog Number:

11510-1-AP

### Size:

150ul, Concentration: 700 ug/ml by Nanodrop;

### Source:

Rabbit

### Isotype:

IgG

### Immunogen Catalog Number:

AG2069

### GenBank Accession Number:

BC023507

### GeneID (NCBI):

10730

### UNIPROT ID:

Q96TA2

### Full Name:

YME1-like 1 (S. cerevisiae)

### Calculated MW:

716 aa, 80 kDa

### Observed MW:

63 kDa

### Purification Method:

Antigen affinity purification

### Recommended Dilutions:

WB: 1:500-1:2000

IP: 0.5-4.0 ug for 1.0-3.0 mg of total protein lysate

IF/ICC: 1:200-1:800

## Applications

### Tested Applications:

WB, IF/ICC, IP, ELISA

### Cited Applications:

WB, IHC, IF, IP, CoIP

### Species Specificity:

human, mouse, rat

### Cited Species:

human, mouse, rat, monkey

### Positive Controls:

WB: COLO 320 cells, HeLa cells, MCF-7 cells

IP: HeLa cells,

IF/ICC: HepG2 cells,

## Background Information

YME1L1(ATP-dependent zinc metalloprotease) is also named as FTS1, YME1L, Meg-4, PAMP. YME1L1 plays a phylogenetically conserved role in mitochondrial protein metabolism. It also ensures cell proliferation, maintains normal cristae morphology and complex I respiration activity, promotes antiapoptotic activity and protects mitochondria from the accumulation of oxidatively damaged membrane proteins. YME1L1 can prevent mitochondrial DNA inserting into nuclear. It has 3 isoforms produced by alternative splicing with the molecular weight of 86 kDa, 80 kDa and 76 kDa. This protein can migrate with a molecular weight of about 55-63 kDa, which is the size of the mature YME1L1 protein(PMID:22252130; 22354088).

## Notable Publications

Author	Pubmed ID	Journal	Application
Olga Zurita Rendón	30061372	Mol Cell Biol	
Ana A Baburamani	26393574	Int J Mol Sci	WB
Barbara M Crisol	31494696	Eur J Nutr	WB

## Storage

### Storage:

Store at -20°C. Stable for one year after shipment.

### Storage Buffer:

PBS with 0.02% sodium azide and 50% glycerol, pH7.3

Aliquoting is unnecessary for -20°C storage

\*\*\* 20ul sizes contain 0.1% BSA

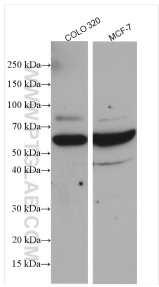
For technical support and original validation data for this product please contact:

T: 1 (888) 4PTGLAB (1-888-478-4522) (toll free in USA), or 1(312) 455-8498 (outside USA)

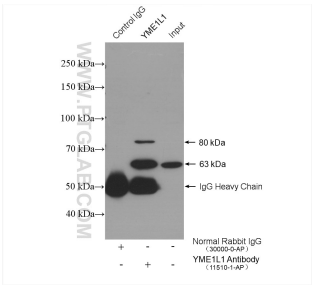
E: [proteintech@ptglab.com](mailto:proteintech@ptglab.com)  
W: [ptglab.com](http://ptglab.com)

This product is exclusively available under Proteintech Group brand and is not available to purchase from any other manufacturer.

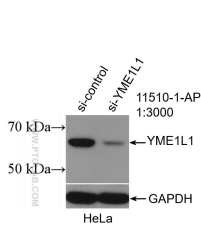
Selected Validation Data



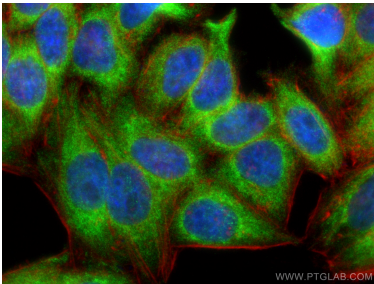
Various lysates were subjected to SDS PAGE followed by western blot with 11510-1-AP (YME1L1 antibody) at dilution of 1:1000 incubated at room temperature for 1.5 hours.



IP result of anti-YME1L1 (IP:11510-1-AP, 4ug; Detection:11510-1-AP 1:500) with HeLa cells lysate 1280 ug.



WB result of YME1L1 antibody (11510-1-AP; 1:3000; incubated at room temperature for 1.5 hours) with sh-Control and sh-YME1L1 transfected HeLa cells.



Immunofluorescent analysis of (4% PFA) fixed HepG2 cells using YME1L1 antibody (11510-1-AP) at dilution of 1:400 and CoraLite®488-Conjugated Goat Anti-Rabbit IgG(H+L) (SA00013-2), CL594-Phalloidin (red).