

For Research Use Only

# MCC Polyclonal antibody

Catalog Number: 11525-1-AP **3 Publications**



## Basic Information

**Catalog Number:**

11525-1-AP

**Size:**

150ul, Concentration: 500 µg/ml by Nanodrop and 273 µg/ml by Bradford method using BSA as the standard;

**Source:**

Rabbit

**Isotype:**

IgG

**Immunogen Catalog Number:**

AG2089

**GenBank Accession Number:**

BC018919

**GeneID (NCBI):**

4163

**Full Name:**

mutated in colorectal cancers

**Calculated MW:**

829 aa, 93 kDa

**Observed MW:**

98 kDa, 113-118 kDa

**Purification Method:**

Antigen affinity purification

**Recommended Dilutions:**

WB 1:500-1:2000

IP 0.5-4.0 ug for IP and 1:500-1:1000 for WB

IHC 1:50-1:500

IF 1:10-1:100

## Applications

**Tested Applications:**

IF, IHC, IP, WB, ELISA

**Cited Applications:**

IF, IHC, WB

**Species Specificity:**

human, mouse

**Cited Species:**

human, mouse

**Note-IHC: suggested antigen retrieval with TE buffer pH 9.0; (\*) Alternatively, antigen retrieval may be performed with citrate buffer pH 6.0**

**Positive Controls:**

WB : fetal human brain tissue, human brain tissue, L02 cells, mouse liver tissue

IP : PC-3 cells,

IHC : human prostate cancer tissue,

IF : PC-3 cells,

## Background Information

MCC (mutated in colorectal cancers) gene been previously been identified by virtue of its mutation in human colorectal tumors. As a candidate for the putative colorectal tumor suppressor gene located at 5q21, MCC protein suppresses cell proliferation and the Wnt/b-catenin pathway in colorectal cancer cells. In addition, MCC is involved in cell migration via binding with Scrib and b-catenin,

## Notable Publications

Author	Pubmed ID	Journal	Application
F A Benthani	29035389	Oncogene	IF
Corbo Claudia C	22623141	Proteomics	WB
Rohrbeck A	19812696	PLoS One.	IHC

## Storage

**Storage:**

Store at -20°C. Stable for one year after shipment.

**Storage Buffer:**

PBS with 0.02% sodium azide and 50% glycerol pH 7.3.

Aliquoting is unnecessary for -20°C storage

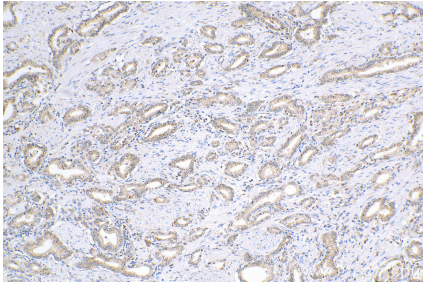
For technical support and original validation data for this product please contact:

T: 1 (888) 4PTGLAB (1-888-478-4522) (toll free in USA), or 1(312) 455-8498 (outside USA)

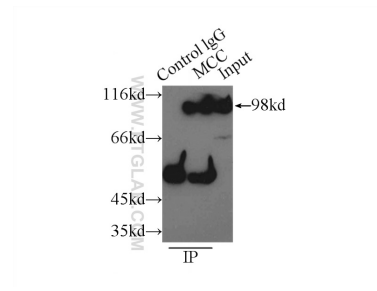
E: proteintech@ptglab.com  
W: ptglab.com

**This product is exclusively available under Proteintech Group brand and is not available to purchase from any other manufacturer.**

## Selected Validation Data



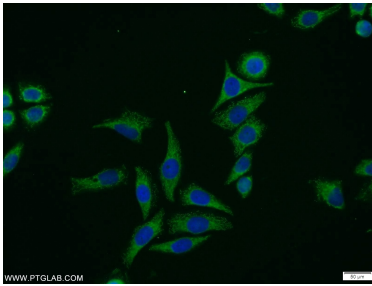
Immunohistochemical analysis of paraffin-embedded human prostate cancer tissue slide using 11525-1-AP (MCC antibody) at dilution of 1:200 (under 10x lens). Heat mediated antigen retrieval with Tris-EDTA buffer (pH 9.0).



IP Result of anti-MCC (IP:11525-1-AP, 3ug; Detection:11525-1-AP 1:500) with PC-3 cells lysate 5000ug.



fetal human brain tissue were subjected to SDS PAGE followed by western blot with 11525-1-AP (MCC Antibody) at dilution of 1:1000 incubated at room temperature for 1.5 hours.



Immunofluorescent analysis of PC-3 cells using 11525-1-AP (MCC antibody) at dilution of 1:25 and Alexa Fluor 488-conjugated AffiniPure Goat Anti-Rabbit IgG(H+L).