

For Research Use Only

FBF1 Polyclonal antibody

Catalog Number: 11531-1-AP

Featured Product

18 Publications



Basic Information

Catalog Number:

11531-1-AP

Size:

150ul, Concentration: 300 µg/ml by Bradford method using BSA as the standard;

Source:

Rabbit

Isotype:

IgG

Immunogen Catalog Number:

AG2106

GenBank Accession Number:

BC023549

GeneID (NCBI):

85302

Full Name:

Fas (TNFRSF6) binding factor 1

Calculated MW:

830 aa, 90 kDa

Observed MW:

130 kDa, 90 kDa, 70 kDa

Purification Method:

Antigen affinity purification

Recommended Dilutions:

WB 1:500-1:1000

IP 0.5-4.0 µg for IP and 1:200-1:1000 for WB

IF 1:200-1:800

Applications

Tested Applications:

IF, IP, WB, ELISA

Cited Applications:

IF, IP, WB

Species Specificity:

human, mouse

Cited Species:

human, mouse

Positive Controls:

WB: mouse liver tissue, COLO 320 cells, L02 cells

IP: mouse liver tissue,

IF: A549 cells, HUVEC cells

Background Information

FBF1, also named as ALB and KIAA1863, is keratin-binding protein required for epithelial cell polarization. It is involved in apical junction complex (AJC) assembly via its interaction with PARD3. FBF1 is required for ciliogenesis. FBF1 has six isoforms with MW 125-127 kDa, 99 kDa, 69 kDa and 55 kDa. This antibody is induced by N-terminal (20-347aa) of FBF1. It recognizes all the six isoforms.

Notable Publications

Author	Pubmed ID	Journal	Application
Lei Wang	30258116	Nat Commun	IF
Akihito Inoko	30318703	Genes Cells	WB, IF
Anna Kazatskaya	29021280	Genetics	IF

Storage

Storage:

Store at -20°C. Stable for one year after shipment.

Storage Buffer:

PBS with 0.02% sodium azide and 50% glycerol pH 7.3.

Aliquoting is unnecessary for -20°C storage

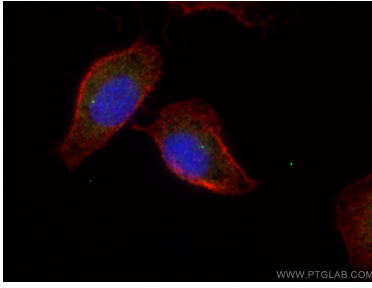
For technical support and original validation data for this product please contact:

T: 1 (888) 4PTGLAB (1-888-478-4522) (toll free in USA), or 1(312) 455-8498 (outside USA)

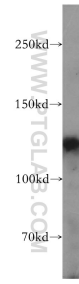
E: proteintech@ptglab.com
W: ptglab.com

This product is exclusively available under Proteintech Group brand and is not available to purchase from any other manufacturer.

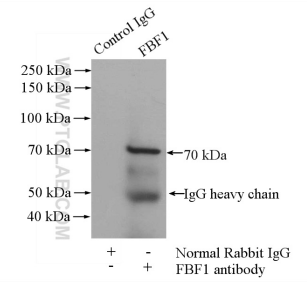
Selected Validation Data



Immunofluorescent analysis of (4% PFA) fixed A549 cells using FBF1 antibody (11531-1-AP) at dilution of 1:400 and CoraLite®488-Conjugated AffiniPure Goat Anti-Rabbit IgG(H+L).



mouse liver tissue were subjected to SDS PAGE followed by western blot with 11531-1-AP (FBF1 antibody) at dilution of 1:500 incubated at room temperature for 1.5 hours.



IP Result of anti-FBF1 (IP:11531-1-AP, 4ug; Detection:11531-1-AP 1:300) with mouse liver tissue lysate 4000ug.