

For Research Use Only

DCI Polyclonal antibody

Catalog Number: 11535-1-AP

1 Publications



Basic Information

Catalog Number:

11535-1-AP

Size:

150ul , Concentration: 150 ug/ml by Nanodrop and 150 ug/ml by Bradford method using BSA as the standard;

Source:

Rabbit

Isotype:

IgG

Immunogen Catalog Number:

AG2094

GenBank Accession Number:

BC020228

GeneID (NCBI):

1632

UNIPROT ID:

P42126

Full Name:

dodecenoyl-Coenzyme A delta isomerase (3,2 trans-enoyl-Coenzyme A isomerase)

Calculated MW:

302 aa, 33 kDa

Observed MW:

31 kDa

Purification Method:

Antigen affinity purification

Recommended Dilutions:

WB: 1:2000-1:12000

IHC: 1:200-1:800

IF/ICC: 1:200-1:800

Applications

Tested Applications:

WB, IHC, IF/ICC, ELISA

Cited Applications:

WB

Species Specificity:

human, mouse, rat

Cited Species:

human

Note-IHC: suggested antigen retrieval with TE buffer pH 9.0; (*) Alternatively, antigen retrieval may be performed with citrate buffer pH 6.0

Positive Controls:

WB : COLO 320 cells, human lung tissue, human brain tissue, human kidney tissue, BxPC-3 cells, HEK-293 cells, HeLa cells, mouse liver tissue, rat liver tissue

IHC : mouse liver tissue, human prostate cancer tissue

IF/ICC : HEK-293 cells, BxPC-3 cells

Background Information

EC11(enoyl-CoA delta isomerase 1, mitochondrial) is also named as DCI(dodecenoyl-CoA isomerase) and belongs to the enoyl-CoA hydratase/isomerase family. It is able to isomerize both 3-cis and 3-trans double bonds into the 2-trans form in a range of enoyl-CoA species. The full length protein has a transit peptide and 2 isoforms produced by alternative splicing and can exist as a homotrimer(PMID:15351645).

Notable Publications

Author	Pubmed ID	Journal	Application
Yuqi Wang	39591965	Cell	WB

Storage

Storage:

Store at -20°C. Stable for one year after shipment.

Storage Buffer:

PBS with 0.02% sodium azide and 50% glycerol, pH7.3

Aliquoting is unnecessary for -20°C storage

*** 20ul sizes contain 0.1% BSA

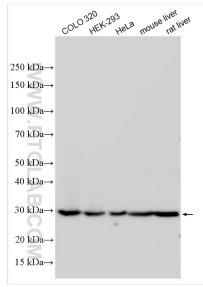
For technical support and original validation data for this product please contact:

T: 1 (888) 4PTGLAB (1-888-478-4522) (toll free in USA), or 1(312) 455-8498 (outside USA)

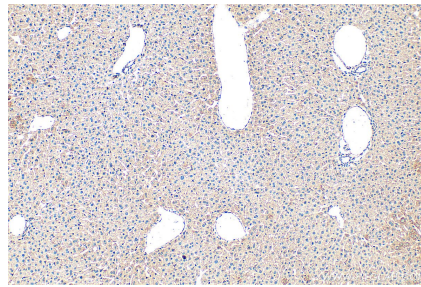
E: proteintech@ptglab.com
W: ptglab.com

This product is exclusively available under Proteintech Group brand and is not available to purchase from any other manufacturer.

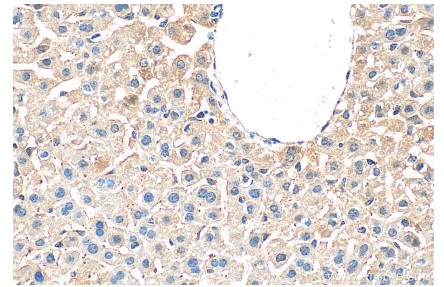
Selected Validation Data



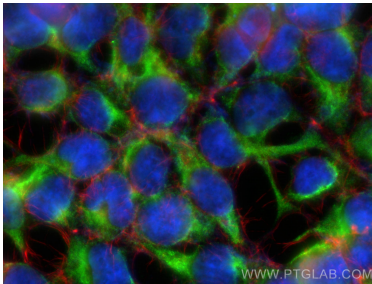
Various lysates were subjected to SDS PAGE followed by western blot with 11535-1-AP (DCI antibody) at dilution of 1:6000 incubated at room temperature for 1.5 hours.



Immunohistochemical analysis of paraffin-embedded mouse liver tissue slide using 11535-1-AP (DCI antibody) at dilution of 1:400 (under 10x lens). Heat mediated antigen retrieval with Tris-EDTA buffer (pH 9.0).



Immunohistochemical analysis of paraffin-embedded mouse liver tissue slide using 11535-1-AP (DCI antibody) at dilution of 1:400 (under 40x lens). Heat mediated antigen retrieval with Tris-EDTA buffer (pH 9.0).



Immunofluorescent analysis of (-20°C Ethanol) fixed HEK-293 cells using DCI antibody (11535-1-AP) at dilution of 1:400 and CoraLite®488-Conjugated AffiniPure Goat Anti-Rabbit IgG(H+L), CL594-Phalloidin (red).