

Cyclin E1 Polyclonal ANTIBODY

Catalog Number: 11554-1-AP

Featured Product

74 Publications

Basic Information

Catalog Number:
11554-1-AP

Size:
47 µg/150 µl

Source:
Rabbit

Isotype:
IgG

Purification Method:
Antigen affinity purification

Immunogen Catalog Number:
AG2110

GenBank Accession Number:
BC035498

GeneID (NCBI):
898

Full Name:
cyclin E1

Calculated MW:
410aa, 47 kDa

Observed MW:
47 kDa

Recommended Dilutions:
WB 1:500-1:2000

Applications

Tested Applications:
FC, WB, ELISA

Cited Applications:
IHC, WB

Species Specificity:
human, mouse

Cited Species:
Artemia, human, mouse, rat, zebrafish

Positive Controls:

WB : MCF-7 cells; HeLa cells, human lung tissue, Jurkat cells, K-562 cells, mouse heart tissue, NIH/3T3 cells

Background Information

Cyclin E1 (CCNE1) is a member of the highly conserved cyclin family, whose members are characterized by a dramatic periodicity in protein abundance through the cell cycle. CCNE1, an essential cyclin activating Cdk2, regulates the G1-S phase transition of the mammalian cell division cycle. Its timing expression plays a direct role in the initiation of DNA replication, the control of histone biosynthesis, and the centrosome cycle. CCNE1 is associated with disease progression in various malignancies and is associated clinically with poor prognosis.

Notable Publications

Author	Pubmed ID	Journal	Application
Hao Yang	27708221	Oncotarget	WB
Ming Yu	30220088	FEBS Lett	WB
Jing-Hua Pan	30191976	J Cell Physiol	WB

Storage

Storage:

Store at -20°C. Stable for one year after shipment.

Storage Buffer:

PBS with 0.1% sodium azide and 50% glycerol pH 7.3.

Aliquoting is unnecessary for -20°C storage

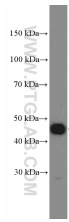
For technical support and original validation data for this product please contact:

T: 1 (888) 4PTGLAB (1-888-478-4522) (toll free in USA), or 1(312) 455-8498 (outside USA)

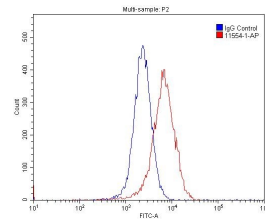
E: proteintech@ptglab.com
W: ptglab.com

This product is exclusively available under Proteintech Group brand and is not available to purchase from any other manufacturer.

Selected Validation Data



MCF-7 cells were subjected to SDS PAGE followed by western blot with 11554-1-AP(Cyclin E1 antibody at dilution of 1:1000 incubated at room temperature for 1.5 hours



1×10^6 MCF-7 cells were stained with 0.2ug Cyclin E1 antibody (11554-1-AP, red) and control antibody (blue). Fixed with 4% PFA blocked with 3% BSA (30 min), Alexa Fluor 488-conjugated AffiniPure Goat Anti-Rabbit IgG(H+L) with dilution 1:1500.