

IGF2BP2 Polyclonal ANTIBODY

Catalog Number: 11601-1-AP

7 Publications

Basic Information

Catalog Number:
11601-1-AP

Size:
40 µg/150 µl

Source:
Rabbit

Isotype:
IgG

Purification Method:
Antigen affinity purification
Immunogen Catalog Number:
AG2142

GenBank Accession Number:
BC021290

GeneID (NCBI):
10644

Full Name:
insulin-like growth factor 2 mRNA binding protein 2

Calculated MW:
594aa, 65 kDa

Observed MW:
65 kDa

Recommended Dilutions:

WB 1:500-1:3000

IP 0.5-4.0 µg for IP and 1:500-1:1000 for WB

IHC 1:50-1:500

Applications

Tested Applications:

IHC, IP, WB, ELISA

Cited Applications:

IF, IHC, RIP, WB

Species Specificity:

human, mouse, rat

Cited Species:

human, mouse

Note-IHC: suggested antigen retrieval with TE buffer pH 9.0; (*) Alternatively, antigen retrieval may be performed with citrate buffer pH 6.0

Positive Controls:

WB : human kidney tissue; COLO 320 cells, human heart tissue

IP : HEK-293 cells;

IHC : human pancreas cancer tissue; human breast cancer tissue

Background Information

Insulin-like growth factor 2 mRNA-binding protein 2 (IGF2BP2), is a member of a family of mRNA binding protein, which can bind to several mammalian cells' mRNAs. Thus it may involve in the regulation of translation of mRNA. IGF2BP2's polymorphisms is risk factor for developing type 2 diabetes. This antibody raise against part of N-terminus of human IGF2BP2.

Notable Publications

Author	Pubmed ID	Journal	Application
Ri-Xin Chen	31619685	Nat Commun	WB, IF, RIP
Shan Huang	31089713	Acta Biochim Biophys Sin (Shanghai)	WB
Nicolas Preitner	27385015	Development	

Storage

Storage:

Store at -20°C. Stable for one year after shipment.

Storage Buffer:

PBS with 0.1% sodium azide and 50% glycerol pH 7.3.

Aliquoting is unnecessary for -20°C storage

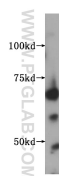
For technical support and original validation data for this product please contact:

T: 1 (888) 4PTGLAB (1-888-478-4522) (toll free in USA), or 1(312) 455-8498 (outside USA)

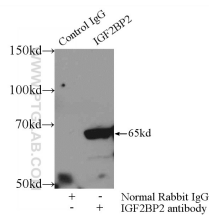
E: proteintech@ptglab.com
W: ptglab.com

This product is exclusively available under Proteintech Group brand and is not available to purchase from any other manufacturer.

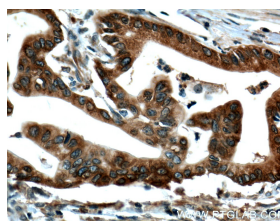
Selected Validation Data



human kidney tissue were subjected to SDS PAGE followed by western blot with 11601-1-AP(IGF2BP2 antibody) at dilution of 1:1000 incubated at room temperature for 1.5 hours



IP Result of anti-IGF2BP2 (IP: 11601-1-AP, 3 μ g; Detection: 11601-1-AP 1:500) with HEK-293 cells lysate 1000 μ g.



Immunohistochemical analysis of paraffin-embedded human pancreas cancer tissue slide using 11601-1-AP(IGF2BP2 Antibody) at dilution of 1:200 (under 40x lens), heat mediated antigen retrieved with Tris-EDTA buffer(pH9).