

For Research Use Only

RAB20 Polyclonal ANTIBODY



Catalog Number: 11616-1-AP

Featured Product

3 Publications

Basic Information

Catalog Number:

11616-1-AP

Size:

150UL, Concentration: 293 µg/ml by Bradford method using BSA as the standard;

Source:

Rabbit

Isotype:

IgG

Immunogen Catalog Number:

AG2193

GenBank Accession Number:

BC026025

GeneID (NCBI):

55647

Full Name:

RAB20, member RAS oncogene family^{for WB}

Calculated MW:

26 kDa

Observed MW:

26-29 kDa

Purification Method:

Antigen affinity purification

Recommended Dilutions:

WB 1:500-1:2000

IP 0.5-4.0 ug for IP and 1:500-1:2000

Applications

Tested Applications:

IP, WB, ELISA

Cited Applications:

IF, WB

Species Specificity:

human, mouse, rat

Cited Species:

mouse

Positive Controls:

WB : SW 1990 cells, HeLa cells

IP : SW 1990 cells,

Background Information

RAB20 is a member of RAS oncogene family, it has no close relationship to any other members of RAB subfamily which consists of small GTP-binding proteins involved in the regulation of intracellular vesicular transport. Firstly found highly expressed on the apical side of kidney tubular epithelial cells, RAB20 was speculated to be involved in apical endocytosis and recycling processes. So far, its function is not well known, however, RAB20 is recently found higher expressed in pancreatic adenocarcinomas than normal pancreas, which is proved by WB and IHC analyses, suggesting its promising role in diagnosis of pancreatic carcinogenesis. Catalog# 11616-1-AP is a rabbit polyclonal antibody raised against full-length of human RAB20.

Notable Publications

Author	Pubmed ID	Journal	Application
Gang Pei	24569883	J Cell Sci	WB,IF
Gang Pei	26157167	Mol Biol Cell	WB,IF
Laura Schnettger	28494243	Cell Host Microbe	WB,IF

Storage

Storage:

Store at -20°C. Stable for one year after shipment.

Storage Buffer:

PBS with 0.1% sodium azide and 50% glycerol pH 7.3.

Aliquoting is unnecessary for -20°C storage

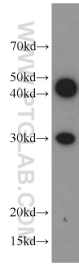
For technical support and original validation data for this product please contact:

T: 1 (888) 4PTGLAB (1-888-478-4522) (toll free in USA), or 1(312) 455-8498 (outside USA)

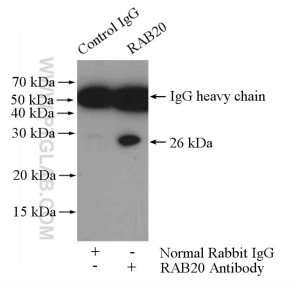
E: proteintech@ptglab.com
W: ptglab.com

This product is exclusively available under Proteintech Group brand and is not available to purchase from any other manufacturer.

Selected Validation Data



SW 1990 cells were subjected to SDS PAGE followed by western blot with 11616-1-AP (RAB20 antibody) at dilution of 1:1000 incubated at room temperature for 1.5 hours.



IP Result of anti-RAB20 (IP:11616-1-AP, 4ug; Detection:11616-1-AP 1:1000) with SW 1990 cells lysate 2400ug.