

For Research Use Only

APH1A Polyclonal antibody

Catalog Number: 11643-1-AP

5 Publications



Basic Information

Catalog Number:

11643-1-AP

Size:

150ul, Concentration: 600 ug/ml by Nanodrop and 300 ug/ml by Bradford method using BSA as the standard;

Source:

Rabbit

Isotype:

IgG

Immunogen Catalog Number:

AG2238

GenBank Accession Number:

BC015568

GeneID (NCBI):

51107

UNIPROT ID:

Q96BI3

Full Name:

anterior pharynx defective 1 homolog A (C. elegans)

Calculated MW:

265 aa, 29 kDa

Observed MW:

27-32 kDa

Purification Method:

Antigen affinity purification

Recommended Dilutions:

WB: 1:2000-1:16000

IP: 0.5-4.0 ug for 1.0-3.0 mg of total protein lysate

IHC: 1:50-1:500

IF/ICC: 1:200-1:800

Applications

Tested Applications:

WB, IHC, IF/ICC, IP, ELISA

Cited Applications:

WB

Species Specificity:

human

Cited Species:

human, mouse

Note-IHC: suggested antigen retrieval with TE buffer pH 9.0; (*) Alternatively, antigen retrieval may be performed with citrate buffer pH 6.0

Positive Controls:

WB: HT-29 cells, HeLa cells, human brain tissue, U-937 cells, rat brain tissue

IP: HeLa cells,

IHC: human stomach tissue,

IF/ICC: HeLa cells,

Notable Publications

Author	Pubmed ID	Journal	Application
Yinrui Guo	34045460	Transl Psychiatry	WB
Feng Zhang	29867325	Front Neurosci	WB
Yasuteru Inoue	34311050	Neurosci Lett	WB

Storage

Storage:

Store at -20°C. Stable for one year after shipment.

Storage Buffer:

PBS with 0.02% sodium azide and 50% glycerol, pH7.3

Aliquoting is unnecessary for -20°C storage

*** 20ul sizes contain 0.1% BSA

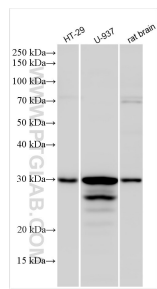
For technical support and original validation data for this product please contact:

T: 1 (888) 4PTGLAB (1-888-478-4522) (toll free in USA), or 1(312) 455-8498 (outside USA)

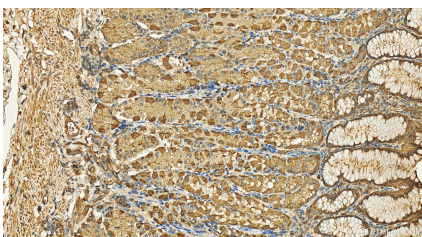
E: proteintech@ptglab.com
W: ptglab.com

This product is exclusively available under Proteintech Group brand and is not available to purchase from any other manufacturer.

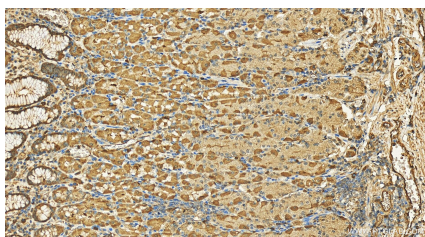
Selected Validation Data



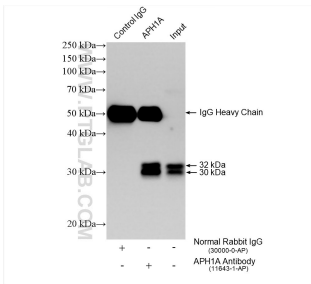
Various lysates were subjected to SDS PAGE followed by western blot with 11643-1-AP (APH1A antibody) at dilution of 1:8000 incubated at room temperature for 1.5 hours.



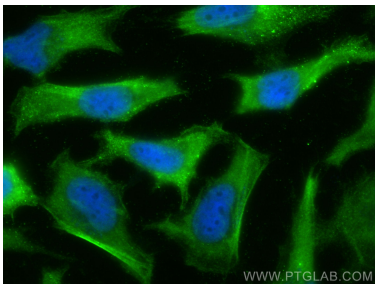
Immunohistochemical analysis of paraffin-embedded human stomach tissue slide using 11643-1-AP (APH1A antibody) at dilution of 1:200 (under 20x lens). Heat mediated antigen retrieval with Tris-EDTA buffer (pH 9.0).



Immunohistochemical analysis of paraffin-embedded human stomach tissue slide using 11643-1-AP (APH1A antibody) at dilution of 1:200 (under 20x lens). Heat mediated antigen retrieval with Tris-EDTA buffer (pH 9.0).



IP result of anti-APH1A (IP:11643-1-AP, 4ug; Detection:11643-1-AP 1:4000) with HeLa cells lysate 1600 ug.



Immunofluorescent analysis of (-20°C Ethanol) fixed HeLa cells using APH1A antibody (11643-1-AP) at dilution of 1:400 and CoraLite®488-Conjugated AffiniPure Goat Anti-Rabbit IgG(H+L) (SA00013-2).