

# CPI17 Polyclonal ANTIBODY

Catalog Number: 11658-1-AP

## Basic Information

<b>Catalog Number:</b> 11658-1-AP	<b>GenBank Accession Number:</b> BC021089	<b>Recommended Dilutions:</b> WB 1:1000-1:4000 IF 1:10-1:100
<b>Size:</b> 20 µg/150 µl	<b>GenID (NCBI):</b> 94274	
<b>Source:</b> Rabbit	<b>Full Name:</b> protein phosphatase 1, regulatory (inhibitor) subunit 14A	
<b>Isotype:</b> IgG	<b>Calculated MW:</b> 147aa, 17 kDa	
<b>Purification Method:</b> Antigen affinity purification	<b>Observed MW:</b> 17 kDa	
<b>Immunogen Catalog Number:</b> AG2237		

## Applications

<b>Tested Applications:</b> IF, WB, ELISA	<b>Positive Controls:</b>
<b>Species Specificity:</b> human	<b>WB :</b> HepG2 cells; HeLa cells, human colon tissue, PC-3 cells
<b>Note: suggested antigen retrieval with TE buffer pH 9.0; (*) Alternatively, antigen retrieval may be performed with citrate buffer pH 6.0</b>	<b>IF :</b> PC-3 cells;

## Background Information

PPP1R14A, also named as CPI17, belongs to the protein phosphatase 1 (PP1) inhibitor family. This protein is an inhibitor of smooth muscle myosin phosphatase, and has higher inhibitory activity when phosphorylated. Inhibition of myosin phosphatase leads to increased myosin phosphorylation and enhanced smooth muscle contraction. CPI17 has two isoforms: CPI-17alpha (17 kDa) and CPI-17beta (13 kDa).

## Notable Publications

Author	Pubmed ID	Journal	Application
--------	-----------	---------	-------------

## Storage

**Storage:**  
Store at -20°C. Stable for one year after shipment.  
**Storage Buffer:**  
PBS with 0.1% sodium azide and 50% glycerol pH 7.3.  
Aliquoting is unnecessary for -20°C storage

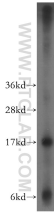
For technical support and original validation data for this product please contact:

T: 1 (888) 4PTGLAB (1-888-478-4522) (toll free in USA), or 1(312) 455-8498 (outside USA)

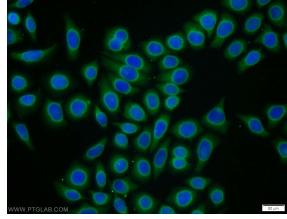
E: [proteintech@ptglab.com](mailto:proteintech@ptglab.com)  
W: [ptglab.com](http://ptglab.com)

This product is exclusively available under Proteintech Group brand and is not available to purchase from any other manufacturer.

## Selected Validation Data



HepG2 cells were subjected to SDS PAGE followed by western blot with 11658-1-AP(CPI17 antibody) at dilution of 1:400 incubated at room temperature for 1.5 hours



Immunofluorescent analysis of PC-3 cells using 11658-1-AP(CPI17 antibody) at dilution of 1:25 and Alexa Fluor 488-conjugated AffiniPure Goat Anti-Rabbit IgG(H+L)