

For Research Use Only

MALT1 Polyclonal antibody

Catalog Number: 11660-1-AP **2 Publications**



Basic Information

| | | |
|--|--|---|
| Catalog Number: 11660-1-AP | GenBank Accession Number: BC030143 | Purification Method: Antigen affinity purification |
| Size: 150ul , Concentration: 400 µg/ml by Nanodrop and 260 µg/ml by Bradford method using BSA as the standard; | GeneID (NCBI): 10892 | Recommended Dilutions: WB 1:500-1:1000 IHC 1:20-1:200 IF 1:10-1:100 |
| Source: Rabbit | Full Name: mucosa associated lymphoid tissue lymphoma translocation gene 1 | |
| Isotype: IgG | Calculated MW: 824 aa, 92 kDa | |
| Immunogen Catalog Number: AG2182 | Observed MW: 92-100 kDa | |

Applications

| | |
|---|--|
| Tested Applications: FC, IF, IHC, WB, ELISA | Positive Controls: WB : HeLa cells, HEK-293 cells, mouse testis tissue |
| Cited Applications: IHC | IHC : human lymphoma tissue, |
| Species Specificity: human, mouse, rat | IF : HepG2 cells, |
| Cited Species: human, rat | |

Note-IHC: suggested antigen retrieval with TE buffer pH 9.0; (*) Alternatively, antigen retrieval may be performed with citrate buffer pH 6.0

Background Information

Mucosa-associated lymphoid tissue lymphoma translocation protein 1 belongs to caspase-like protein superfamily. MALT1 plays a potential role in the regulation of apoptosis and induces NFκB activation and required for the normal development of B cells and for the activation of the IKK complex. It acts as a caspase and mediates additional functions related to T cell activation, cleaving both the ubiquitin editing enzyme, TNFAIP3, and the C terminus of BCL10. It has two isoforms. Researches showed that inhibition of MALT1 blocks A20 and BCL10 cleavage, reduces NFκB activity, and decreases the expression of NFκB targets BCLXL.

Notable Publications

| Author | Pubmed ID | Journal | Application |
|----------------|-----------|--------------|-------------|
| Zhenglin Chang | 35246671 | Food Funct | IHC |
| Ke-Hung Tsui | 33802402 | Biomedicines | IHC |

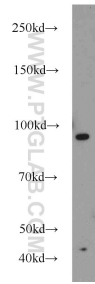
Storage

Storage:
Store at -20°C. Stable for one year after shipment.
Storage Buffer:
PBS with 0.02% sodium azide and 50% glycerol pH 7.3.
Aliquoting is unnecessary for -20°C storage

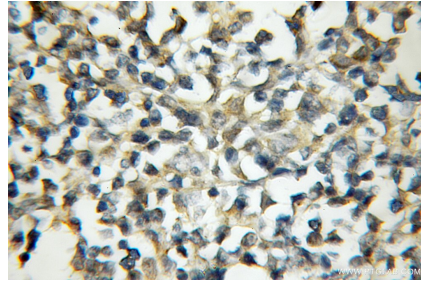
For technical support and original validation data for this product please contact:
T: 1 (888) 4PTGLAB (1-888-478-4522) (toll free in USA), or 1(312) 455-8498 (outside USA)
E: proteintech@ptglab.com
W: ptglab.com

This product is exclusively available under Proteintech Group brand and is not available to purchase from any other manufacturer.

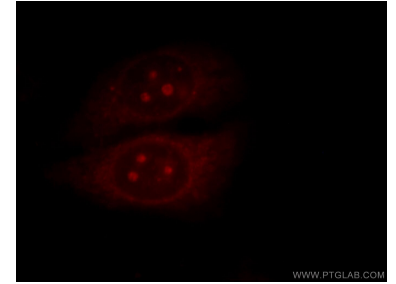
Selected Validation Data



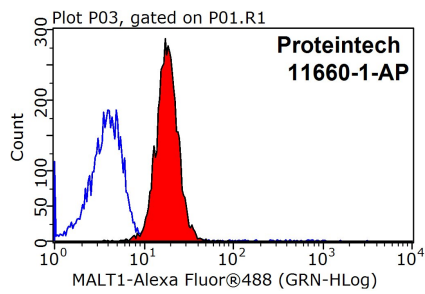
HeLa cells were subjected to SDS PAGE followed by western blot with 11660-1-AP (MALT1 antibody) at dilution of 1:600 incubated at room temperature for 1.5 hours.



Immunohistochemical analysis of paraffin-embedded human lymphoma using 11660-1-AP (MALT1 antibody) at dilution of 1:50 (under 10x lens).



Immunofluorescent analysis of HepG2 cells, using MALT1 antibody 11660-1-AP at 1:25 dilution and Rhodamine-labeled goat anti-rabbit IgG (red).



1X10⁶ HeLa cells were stained with 0.2ug MALT1 antibody (11660-1-AP, red) and control antibody (blue). Fixed with 90% MeOH blocked with 3% BSA (30 min). Alexa Fluor 488-conjugated AffiniPure Goat Anti-Rabbit IgG(H+L) with dilution 1:1500.