

For Research Use Only

# Profilin 1 Polyclonal ANTIBODY



Catalog Number: 11680-1-AP

5 Publications

## Basic Information

Catalog Number:  
11680-1-AP

Size:  
56 µg/150 µl

Source:  
Rabbit

Isotype:  
IgG

Purification Method:  
Antigen affinity purification

Immunogen Catalog Number:  
AG2286

GenBank Accession Number:  
BC006768

GeneID (NCBI):  
5216

Full Name:  
profilin 1

Calculated MW:  
140aa, 15 kDa

Observed MW:  
15 kDa

Recommended Dilutions:

WB 1:1000-1:6000

IHC 1:20-1:200

## Applications

Tested Applications:

IHC, WB, ELISA

Cited Applications:

WB

Species Specificity:

human,mouse,rat

Cited Species:

human, rat

**Note: suggested antigen retrieval with TE buffer pH 9.0; (\*) Alternatively, antigen retrieval may be performed with citrate buffer pH 6.0**

Positive Controls:

WB : human brain tissue; HeLa cells, Jurkat cells, NIH/3T3 cells

IHC : human colon cancer tissue;

## Background Information

Profilin-1 (PFN1) plays an important role in the control of actin dynamics, and could represent an important therapeutic target in several diseases. PFN1 is identified as a huntingtin aggregation inhibitor, and may serve as a tumor-suppressor. PFN1 is crucial for the conversion of monomeric (G)-actin to filamentous (F)-actin. Amyotrophic lateral sclerosis (ALS) is a late-onset neurodegenerative disorder resulting from motor neuron death. Cells expressing PFN1 mutants contain ubiquitinated, insoluble aggregates that in many cases contain the ALS-associated protein TDP-43. Recently, PFN1 is a potential biomarker for bladder cancer aggressiveness and may be of great clinical importance.

## Notable Publications

Author	Pubmed ID	Journal	Application
Bo Ma	30235220	PLoS One	WB
Yu Lian	30326930	J Exp Clin Cancer Res	WB
Dayun Yang	24818882	Biomaterials	WB

## Storage

Storage:

Store at -20°C. Stable for one year after shipment.

Storage Buffer:

PBS with 0.1% sodium azide and 50% glycerol pH 7.3.

Aliquoting is unnecessary for -20°C storage

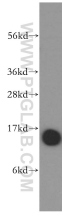
For technical support and original validation data for this product please contact:

T: 1 (888) 4PTGLAB (1-888-478-4522) (toll free in USA), or 1(312) 455-8498 (outside USA)

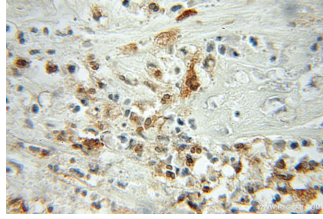
E: [proteintech@ptglab.com](mailto:proteintech@ptglab.com)  
W: [ptglab.com](http://ptglab.com)

This product is exclusively available under Proteintech Group brand and is not available to purchase from any other manufacturer.

## Selected Validation Data



human brain tissue were subjected to SDS PAGE followed by western blot with 11680-1-AP(Profilin 1 antibody) at dilution of 1:500 incubated at room temperature for 1.5 hours



Immunohistochemical of paraffin-embedded human colon cancer using 11680-1-AP(Profilin 1 antibody) at dilution of 1:50 (under 10x lens)