

For Research Use Only

# IPO13 Polyclonal ANTIBODY



Catalog Number: 11696-2-AP

1 Publications

## Basic Information

Catalog Number:  
11696-2-AP

Size:  
20 µg/150 µl

Source:  
Rabbit

Isotype:  
IgG

Purification Method:  
Antigen affinity purification

Immunogen Catalog Number:  
AG2317

GenBank Accession Number:  
BC008194

GeneID (NCBI):  
9670

Full Name:  
importin 13

Calculated MW:  
963aa, 108 kDa

Observed MW:  
97 kDa

Recommended Dilutions:

WB 1:500-1:2000

IHC 1:20-1:200

IF 1:20-1:200

## Applications

Tested Applications:

IF, IHC, WB, ELISA

Cited Applications:

IF, IHC, WB

Species Specificity:

human,mouse,rat

Cited Species:

human

**Note: suggested antigen retrieval with TE buffer pH 9.0; (\*) Alternatively, antigen retrieval may be performed with citrate buffer pH 6.0**

Positive Controls:

WB : MCF-7 cells; human heart tissue, HEK-293 cells, mouse testis tissue, human brain tissue, HeLa cells

IHC : human gliomas tissue; human endometrial cancer tissue

IF : HeLa cells;

## Background Information

### Notable Publications

Author	Pubmed ID	Journal	Application
Wang Hua H	19593795	Stem Cells	WB,IHC,IF

## Storage

Storage:

Store at -20°C. Stable for one year after shipment.

Storage Buffer:

PBS with 0.1% sodium azide and 50% glycerol pH 7.3.

Aliquoting is unnecessary for -20°C storage

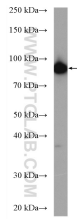
For technical support and original validation data for this product please contact:

T: 1 (888) 4PTGLAB (1-888-478-4522) (toll free in USA), or 1(312) 455-8498 (outside USA)

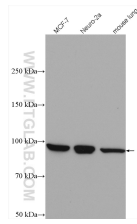
E: [proteintech@ptglab.com](mailto:proteintech@ptglab.com)  
W: [ptglab.com](http://ptglab.com)

This product is exclusively available under Proteintech Group brand and is not available to purchase from any other manufacturer.

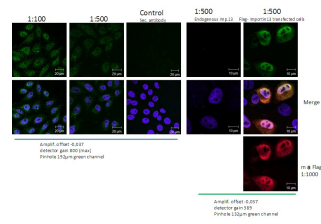
## Selected Validation Data



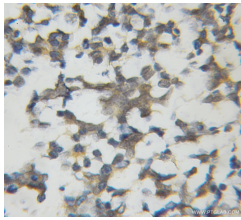
MCF-7 cells were subjected to SDS PAGE followed by western blot with 11696-2-AP (IPO13 antibody) at dilution of 1:1000 incubated at room temperature for 1.5 hours



Various lysates were subjected to SDS PAGE followed by western blot with 11696-2-AP (IPO13 antibody) at dilution of 1:2000 incubated at room temperature for 1.5 hours



IF result in HeLa cell from Dr. Ralph Kehlenbach showed Nuclear and Cytoplasmic stain.



Immunohistochemical of paraffin-embedded human gliomas using 11696-2-AP(IPO13 antibody) at dilution of 1:50 (under 10x lens)