

For Research Use Only

CHCHD1 Polyclonal antibody

Catalog Number: 11728-1-AP

2 Publications



Basic Information

Catalog Number:

11728-1-AP

Size:

150ul, Concentration: 1000 ug/ml by Nanodrop and 433 ug/ml by Bradford method using BSA as the standard;

Source:

Rabbit

Isotype:

IgG

Immunogen Catalog Number:

AG2325

GenBank Accession Number:

BC020852

GeneID (NCBI):

118487

UNIPROT ID:

Q96BP2

Full Name:

coiled-coil-helix-coiled-coil-helix domain containing 1

Calculated MW:

13 kDa

Observed MW:

13 kDa

Purification Method:

Antigen affinity purification

Recommended Dilutions:

WB: 1:500-1:1000

IHC: 1:50-1:500

IF/ICC: 1:50-1:500

FC (Intra): 0.25 ug per 10⁶ cells in a 100 µl suspension

Applications

Tested Applications:

WB, IHC, IF/ICC, FC (Intra), ELISA

Cited Applications:

WB

Species Specificity:

human

Cited Species:

human

Note-IHC: suggested antigen retrieval with TE buffer pH 9.0; (*) Alternatively, antigen retrieval may be performed with citrate buffer pH 6.0

Positive Controls:

WB: A431 cells,

IHC: human stomach cancer tissue,

IF/ICC: A431 cells,

FC (Intra): A431 cells,

Notable Publications

Author	Pubmed ID	Journal	Application
Elena Lavdovskaia	38992089	Nat Struct Mol Biol	WB
Taru Hilander	39015150	iScience	

Storage

Storage:

Store at -20°C. Stable for one year after shipment.

Storage Buffer:

PBS with 0.02% sodium azide and 50% glycerol, pH7.3

Aliquoting is unnecessary for -20°C storage

*** 20ul sizes contain 0.1% BSA

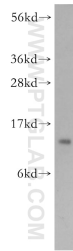
For technical support and original validation data for this product please contact:

T: 1 (888) 4PTGLAB (1-888-478-4522) (toll free in USA), or 1(312) 455-8498 (outside USA)

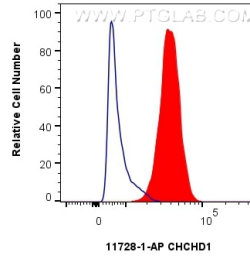
E: proteintech@ptglab.com
W: ptglab.com

This product is exclusively available under Proteintech Group brand and is not available to purchase from any other manufacturer.

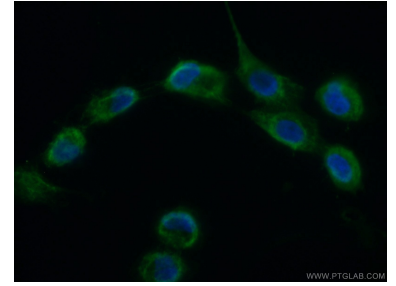
Selected Validation Data



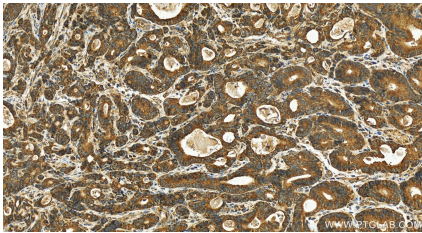
A431 cells were subjected to SDS PAGE followed by western blot with 11728-1-AP (CHCHD1 antibody) at dilution of 1:300 incubated at room temperature for 1.5 hours.



1×10^6 A431 cells were intracellularly stained with 0.25 μ g CHCHD1 Polyclonal antibody (11728-1-AP) and CoraLite® 488-Conjugated Goat Anti-Rabbit IgG(H+L) (SA00013-2)(red), or 0.25 μ g Rabbit IgG control Rabbit PolyAb (30000-0-AP) (blue). Cells were fixed with 4% PFA and permeabilized with Flow Cytometry Perm Buffer (PF00011-C).



Immunofluorescent analysis of (10% Formaldehyde) fixed A431 cells using 11728-1-AP (CHCHD1 antibody) at dilution of 1:50 and Alexa Fluor 488-conjugated AffiniPure Goat Anti-Rabbit IgG(H+L).



Immunohistochemical analysis of paraffin-embedded human stomach cancer tissue slide using 11728-1-AP (CHCHD1 antibody) at dilution of 1:200 (under 20x lens). Heat mediated antigen retrieval with Tris-EDTA buffer (pH 9.0).