

For Research Use Only

DCLRE1C Polyclonal antibody

Catalog Number: 11747-1-AP

1 Publications



Basic Information

Catalog Number:

11747-1-AP

Size:

150ul , Concentration: 167 ug/ml by Bradford method using BSA as the standard;

Source:

Rabbit

Isotype:

IgG

Immunogen Catalog Number:

AG2343

GenBank Accession Number:

BC022254

GeneID (NCBI):

64421

UNIPROT ID:

Q96SD1

Full Name:

DNA cross-link repair 1C (PSO2 homolog, *S. cerevisiae*)

Calculated MW:

692 aa, 78 kDa

Observed MW:

60 kDa

Purification Method:

Antigen affinity purification

Recommended Dilutions:

WB 1:500-1:1000

Applications

Tested Applications:

WB, ELISA

Cited Applications:

WB

Species Specificity:

human, mouse, rat

Cited Species:

human

Positive Controls:

WB : HeLa cells, human kidney tissue

Notable Publications

Author	Pubmed ID	Journal	Application
Yangyang Li	40054178	Phytomedicine	WB

Storage

Storage:

Store at -20°C. Stable for one year after shipment.

Storage Buffer:

PBS with 0.02% sodium azide and 50% glycerol, pH7.3

Aliquoting is unnecessary for -20°C storage

*** 20ul sizes contain 0.1% BSA

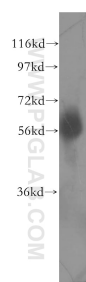
For technical support and original validation data for this product please contact:

T: 1 (888) 4PTGLAB (1-888-478-4522) (toll free in USA), or 1(312) 455-8498 (outside USA)

E: proteintech@ptglab.com
W: ptglab.com

This product is exclusively available under Proteintech Group brand and is not available to purchase from any other manufacturer.

Selected Validation Data



HeLa cells were subjected to SDS PAGE followed by western blot with 11747-1-AP (DCLRE1C antibody) at dilution of 1:400 incubated at room temperature for 1.5 hours.