

For Research Use Only

# PRIM2 Polyclonal antibody

Catalog Number: 11788-1-AP

Featured Product

1 Publications



## Basic Information

**Catalog Number:**

11788-1-AP

**Size:**

150ul, Concentration: 550 ug/ml by Nanodrop;

**Source:**

Rabbit

**Isotype:**

IgG

**Immunogen Catalog Number:**

AG2370

**GenBank Accession Number:**

BC017833

**GeneID (NCBI):**

5558

**UNIPROT ID:**

P49643

**Full Name:**

primase, DNA, polypeptide 2 (58kDa)

**Calculated MW:**

58 kDa

**Observed MW:**

58 kDa

**Purification Method:**

Antigen affinity purification

**Recommended Dilutions:**

WB 1:500-1:1000

IF/ICC 1:50-1:500

## Applications

**Tested Applications:**

WB, IF/ICC, ELISA

**Cited Applications:**

WB

**Species Specificity:**

human, mouse, rat

**Cited Species:**

human

**Positive Controls:**

WB : A375 cells, HeLa cells, MCF-7 cells, NIH/3T3 cells

IF/ICC : A375 cells,

## Notable Publications

Author	Pubmed ID	Journal	Application
Jingyang Yin	39556158	Med Oncol	WB

## Storage

**Storage:**

Store at -20°C. Stable for one year after shipment.

**Storage Buffer:**

PBS with 0.02% sodium azide and 50% glycerol pH 7.3.

Aliquoting is unnecessary for -20°C storage

\*\*\* 20ul sizes contain 0.1% BSA

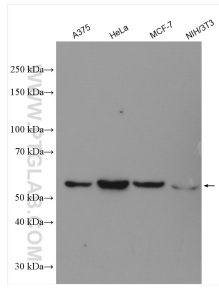
For technical support and original validation data for this product please contact:

T: 1 (888) 4PTGLAB (1-888-478-4522) (toll free in USA), or 1(312) 455-8498 (outside USA)

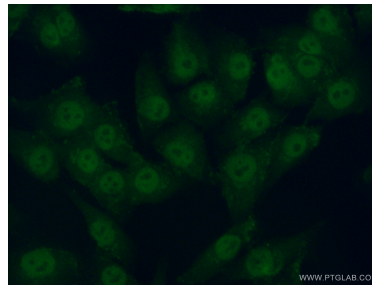
E: [proteintech@ptglab.com](mailto:proteintech@ptglab.com)  
W: [ptglab.com](http://ptglab.com)

This product is exclusively available under Proteintech Group brand and is not available to purchase from any other manufacturer.

## Selected Validation Data



Various lysates were subjected to SDS PAGE followed by western blot with 11788-1-AP (PRIM2 antibody) at dilution of 1:800 incubated at room temperature for 1.5 hours.



Immunofluorescent analysis of (4% PFA) fixed A375 cells using 11788-1-AP (PRIM2 antibody) at dilution of 1:50 and Alexa Fluor 488-conjugated AffiniPure Goat Anti-Rabbit IgG(H+L).