

For Research Use Only

POPDC3 Polyclonal antibody

Catalog Number: 11800-1-AP

Featured Product

4 Publications



Basic Information

Catalog Number:

11800-1-AP

Size:

150ul, Concentration: 850 ug/ml by Nanodrop and 520 ug/ml by Bradford method using BSA as the standard;

Source:

Rabbit

Isotype:

IgG

Immunogen Catalog Number:

AG2375

GenBank Accession Number:

BC022323

GeneID (NCBI):

64208

UNIPROT ID:

Q9HBV1

Full Name:

popeye domain containing 3

Calculated MW:

34 kDa

Observed MW:

60 kDa

Purification Method:

Antigen affinity purification

Recommended Dilutions:

WB: 1:500-1:2000

IP: 0.5-4.0 ug for 1.0-3.0 mg of total protein lysate

IHC: 1:50-1:500

Applications

Tested Applications:

WB, IP, IHC, ELISA

Cited Applications:

WB, IHC, IF

Species Specificity:

human, mouse, rat

Cited Species:

human

Note-IHC: suggested antigen retrieval with TE buffer pH 9.0; (*) Alternatively, antigen retrieval may be performed with citrate buffer pH 6.0

Positive Controls:

WB: COLO 320 cells, HEK-293 cells

IP: HeLa cells,

IHC: mouse heart tissue, human skeletal muscle tissue, human placenta tissue, human testis tissue, human spleen tissue, human lung tissue

Background Information

The Popeye domain-containing (POPDC) gene family includes BVES/POPDC1, POPDC2 and POPDC3. POPDC proteins are highly evolutionarily conserved transmembrane proteins expressed in embryonic epithelium, heart and muscle. POPDC3 is a 291-amino acid protein containing three putative transmembrane domains. It has been reported that POPDC3 expression is reduced in gastric cancer, suggesting it might play an important role in the progression and metastases of gastric cancer. (PMID: 10882522; 20627872; 22654436)

Notable Publications

| Author | Pubmed ID | Journal | Application |
|--------------|-----------|-----------------------|-------------|
| Xiao-Ren Zhu | 39971925 | Cell Death Dis | WB, IHC, IF |
| Yuying Wu | 36713522 | Front Oncol | IHC |
| Luo Deng D | 22654436 | World J Gastroenterol | IHC |

Storage

Storage:

Store at -20°C. Stable for one year after shipment.

Storage Buffer:

PBS with 0.02% sodium azide and 50% glycerol, pH7.3

Aliquoting is unnecessary for -20°C storage

*** 20ul sizes contain 0.1% BSA

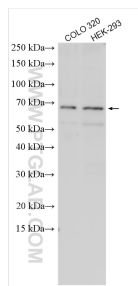
For technical support and original validation data for this product please contact:

T: 1 (888) 4PTGLAB (1-888-478-4522) (toll free in USA), or 1(312) 455-8498 (outside USA)

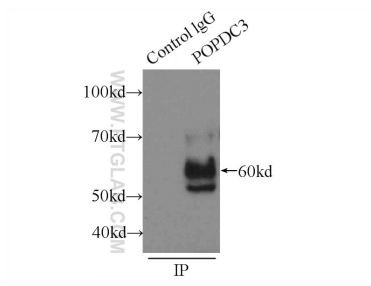
E: proteintech@ptglab.com
W: ptglab.com

This product is exclusively available under Proteintech Group brand and is not available to purchase from any other manufacturer.

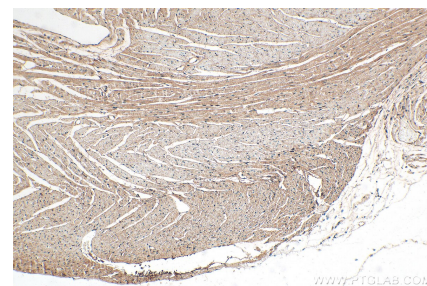
Selected Validation Data



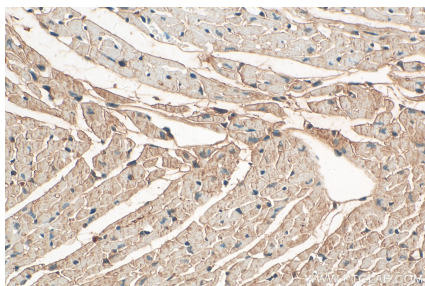
Various lysates were subjected to SDS PAGE followed by western blot with 11800-1-AP (POPDC3 antibody) at dilution of 1:1000 incubated at room temperature for 1.5 hours.



IP result of anti-POPDC3 (IP:11800-1-AP, 3ug; Detection:11800-1-AP 1:1000) with HeLa cells lysate 220ug.



Immunohistochemical analysis of paraffin-embedded mouse heart tissue slide using 11800-1-AP (POPDC3 antibody) at dilution of 1:200 (under 10x lens). Heat mediated antigen retrieval with Tris-EDTA buffer (pH 9.0).



Immunohistochemical analysis of paraffin-embedded mouse heart tissue slide using 11800-1-AP (POPDC3 antibody) at dilution of 1:200 (under 40x lens). Heat mediated antigen retrieval with Tris-EDTA buffer (pH 9.0).