

For Research Use Only

Caspase 4/p20/p10 Polyclonal antibody



Catalog Number: 11856-1-AP

8 Publications

Basic Information

Catalog Number: 11856-1-AP	GenBank Accession Number: BC017839	Purification Method: Antigen affinity purification
Size: 150ul , Concentration: 900 µg/ml by Nanodrop and 450 µg/ml by Bradford method using BSA as the standard;	GeneID (NCBI): 837	Recommended Dilutions: WB 1:500-1:1000 IHC 1:20-1:200 IF 1:50-1:500
Source: Rabbit	Full Name: caspase 4, apoptosis-related cysteine peptidase	
Isotype: IgG	Calculated MW: 377 aa, 43 kDa	
Immunogen Catalog Number: AG2429	Observed MW: 43-48 kDa	

Applications

Tested Applications: IF, IHC, WB, ELISA	Positive Controls: WB : SGC-7901 cells, IHC : human pancreas cancer tissue, IF : HepG2 cells,
Cited Applications: WB	
Species Specificity: human	
Cited Species: human	
Note-IHC: suggested antigen retrieval with TE buffer pH 9.0; (*) Alternatively, antigen retrieval may be performed with citrate buffer pH 6.0	

Background Information

Caspase 4 (CASP4), is a member of the cysteine-aspartic acid protease (caspase) family. Sequential activation of caspases plays a central role in the execution-phase of cell apoptosis. Caspase 4 is able to cleave and activate its own precursor protein, as well as caspase 1 precursor. Overexpression of caspase 4 will induce cell apoptosis.

Notable Publications

Author	Pubmed ID	Journal	Application
Xiao-Lei Xin	31542790	Med Sci Monit	WB
Qingshan Ji	33118609	Inflammation	WB
Xiaomin Xia	30378427	Chem Res Toxicol	WB

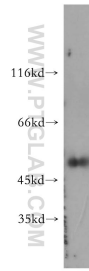
Storage

Storage:
Store at -20°C. Stable for one year after shipment.
Storage Buffer:
PBS with 0.02% sodium azide and 50% glycerol pH 7.3.
Aliquoting is unnecessary for -20°C storage

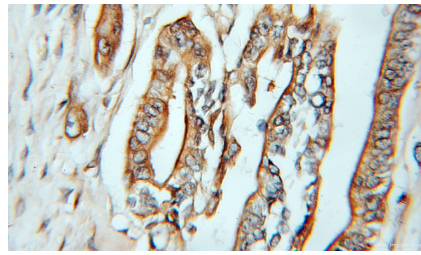
For technical support and original validation data for this product please contact:
T: 1 (888) 4PTGLAB (1-888-478-4522) (toll free in USA), or 1(312) 455-8498 (outside USA)
E: proteintech@ptglab.com
W: ptglab.com

This product is exclusively available under Proteintech Group brand and is not available to purchase from any other manufacturer.

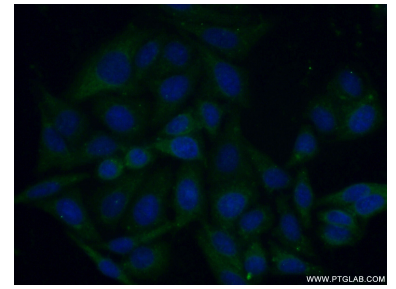
Selected Validation Data



SGC-7901 cells were subjected to SDS PAGE followed by western blot with 11856-1-AP (CASP4 antibody) at dilution of 1:300 incubated at room temperature for 1.5 hours.



Immunohistochemical analysis of paraffin-embedded human pancreas cancer using 11856-1-AP (CASP4 antibody) at dilution of 1:50 (under 25x lens).



Immunofluorescent analysis of (-20 Ethanol) fixed HepG2 cells using 11856-1-AP (Caspase 4/p20/p10 antibody) at dilution of 1:50 and Alexa Fluor 488-conjugated AffiniPure Goat Anti-Rabbit IgG(H+L).