

For Research Use Only

# VPS37A Polyclonal antibody

Catalog Number: 11870-1-AP

Featured Product

17 Publications



## Basic Information

### Catalog Number:

11870-1-AP

### Size:

150ul, Concentration: 600 ug/ml by Nanodrop and 333 ug/ml by Bradford method using BSA as the standard;

### Source:

Rabbit

### Isotype:

IgG

### Immunogen Catalog Number:

AG2453

### GenBank Accession Number:

BC022363

### GeneID (NCBI):

137492

### UNIPROT ID:

Q8NEZ2

### Full Name:

vacuolar protein sorting 37 homolog A (S. cerevisiae)

### Calculated MW:

44 kDa

### Observed MW:

45 kDa

### Purification Method:

Antigen affinity purification

### Recommended Dilutions:

WB: 1:1000-1:8000

IHC: 1:50-1:500

IF-P: 1:50-1:500

## Applications

### Tested Applications:

WB, IHC, IF-P, ELISA

### Cited Applications:

WB, IHC, IF

### Species Specificity:

human, mouse, rat

### Cited Species:

human, mouse

**Note-IHC: suggested antigen retrieval with TE buffer pH 9.0; (\*) Alternatively, antigen retrieval may be performed with citrate buffer pH 6.0**

### Positive Controls:

WB: HeLa cells, human liver tissue, MCF-7 cells, mouse liver tissue, rat liver tissue

IHC: human kidney tissue,

IF-P: human liver tissue,

## Background Information

VPS37A, also named as HCRP1, belongs to the VPS37 family. It is a regulator of vesicular trafficking process. VPS37A is a member of the endosomal sorting complex required for transport (ESCRT) system, in upper motor neuron disease. ESCRT has been shown to play a central role in intracellular trafficking, in the maturation of multivesicular bodies and the sorting of ubiquitinated membrane proteins into internal luminal vesicles.

## Notable Publications

Author	Pubmed ID	Journal	Application
Hao Xu	28963677	Virchows Arch	WB, IHC
Jalal M Kazan	34761192	iScience	WB
Revathi Sekar	36243006	Cell Metab	IF

## Storage

### Storage:

Store at -20°C. Stable for one year after shipment.

### Storage Buffer:

PBS with 0.02% sodium azide and 50% glycerol, pH7.3

Aliquoting is unnecessary for -20°C storage

\*\*\* 20ul sizes contain 0.1% BSA

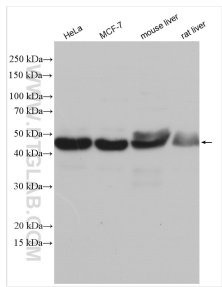
For technical support and original validation data for this product please contact:

T: 1 (888) 4PTGLAB (1-888-478-4522) (toll free in USA), or 1(312) 455-8498 (outside USA)

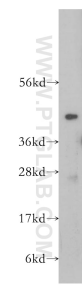
E: proteintech@ptglab.com  
W: ptglab.com

This product is exclusively available under Proteintech Group brand and is not available to purchase from any other manufacturer.

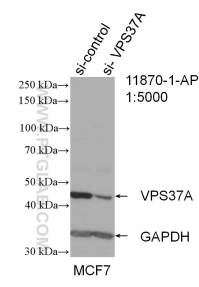
Selected Validation Data



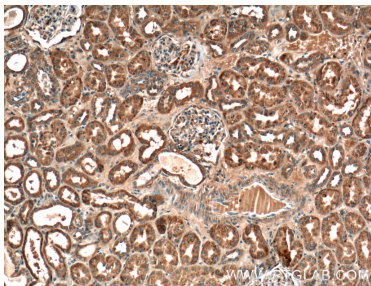
Various lysates were subjected to SDS PAGE followed by western blot with 11870-1-AP (VPS37A antibody) at dilution of 1:4000 incubated at room temperature for 1.5 hours.



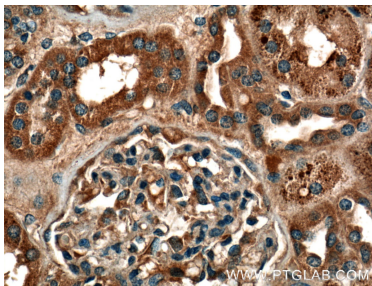
human liver tissue were subjected to SDS PAGE followed by western blot with 11870-1-AP (VPS37A antibody) at dilution of 1:400 incubated at room temperature for 1.5 hours.



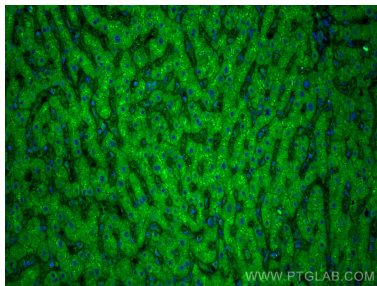
WB result of VPS37A antibody (11870-1-AP; 1:5000; incubated at room temperature for 1.5 hours) with sh-Control and sh-VPS37A transfected MCF-7 cells.



Immunohistochemical analysis of paraffin-embedded human kidney tissue slide using 11870-1-AP (VPS37A antibody) at dilution of 1:200 (under 10x lens).



Immunohistochemical analysis of paraffin-embedded human kidney tissue slide using 11870-1-AP (VPS37A antibody) at dilution of 1:200 (under 40x lens).



Immunofluorescent analysis of (4% PFA) fixed human liver tissue using VPS37A antibody (11870-1-AP) at dilution of 1:200 and CoraLite®488-Conjugated Goat Anti-Rabbit IgG(H+L).