

ST2 Polyclonal ANTIBODY

Catalog Number: 11920-1-AP

8 Publications

Basic Information

Catalog Number:
11920-1-AP

Size:
60 µg/150 µl

Source:
Rabbit

Isotype:
IgG

Purification Method:
Antigen affinity purification

Immunogen Catalog Number:
AG2555

GenBank Accession Number:
BC030975

GeneID (NCBI):
9173

Full Name:
interleukin 1 receptor-like 1

Calculated MW:
63 kDa, 37 kDa, 30 kDa

Observed MW:
30 kDa, 40 kDa

Recommended Dilutions:

WB 1:500-1:2000

IHC 1:50-1:500

Applications

Tested Applications:

IHC, WB, ELISA

Cited Applications:

IF, IHC, WB

Species Specificity:

human, mouse, rat

Cited Species:

human, mouse, rat

**Note-IHC: suggested antigen retrieval with
TE buffer pH 9.0; (*) Alternatively, antigen
retrieval may be performed with citrate
buffer pH 6.0**

Positive Controls:

WB : mouse brain tissue; multi-cells

IHC : human lung cancer tissue; human heart tissue

Background Information

Protein ST2, also known as IL1RL1, is a member of the interleukin 1 receptor family. The gene of ST2 encodes three splice variants: a soluble secreted form, a transmembrane form and a form of undetermined localization. This antibody recognizes at least 80kd, 40kd and 30kd forms in different tissues and cells.

Notable Publications

Author	Pubmed ID	Journal	Application
P Li	25251808	Clin Exp Dermatol	IF
Rebecca L Maywald	25918379	Proc Natl Acad Sci U S A	IHC
Hong Chen	29736154	Mediators Inflamm	WB,IF

Storage

Storage:

Store at -20°C. Stable for one year after shipment.

Storage Buffer:

PBS with 0.1% sodium azide and 50% glycerol pH 7.3.

Aliquoting is unnecessary for -20°C storage

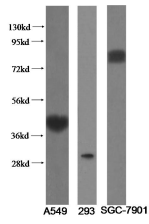
For technical support and original validation data for this product please contact:

T: 1 (888) 4PTGLAB (1-888-478-4522) (toll free in USA), or 1(312) 455-8498 (outside USA)

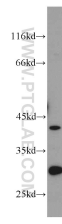
E: proteintech@ptglab.com
W: ptglab.com

This product is exclusively available under Proteintech Group brand and is not available to purchase from any other manufacturer.

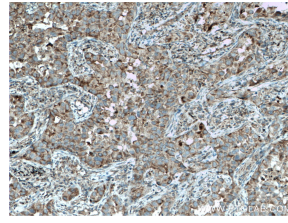
Selected Validation Data



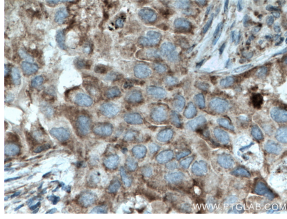
Variants of IL1RL1 recognized by 11920-1-AP.



mouse brain tissue were subjected to SDS PAGE followed by western blot with 11920-1-AP(ST2 antibody) at dilution of 1:1000 incubated at room temperature for 1.5 hours



Immunohistochemical analysis of paraffin-embedded human lung cancer tissue slide using 11920-1-AP(ST2 antibody) at dilution of 1:200 (under 10x lens) heat mediated antigen retrieved with Tris-EDTA buffer(pH9).



Immunohistochemical analysis of paraffin-embedded human lung cancer tissue slide using 11920-1-AP(ST2 antibody) at dilution of 1:200 (under 40x lens) heat mediated antigen retrieved with Tris-EDTA buffer(pH9).