

# CSPP1 Polyclonal ANTIBODY

Catalog Number: 11931-1-AP

Featured Product

7 Publications

## Basic Information

Catalog Number:  
11931-1-AP

Size:  
59 µg/150 µl

Source:  
Rabbit

Isotype:  
IgG

Purification Method:  
Antigen affinity purification

Immunogen Catalog Number:  
AG2521

GenBank Accession Number:  
BC029445

GeneID (NCBI):  
79848

Full Name:  
centrosome and spindle pole associated protein  
1

Calculated MW:  
141 kDa

Observed MW:  
141 kDa

Recommended Dilutions:

WB 1:500-1:1000  
IF 1:10-1:100

## Applications

Tested Applications:

IF, WB, ELISA

Cited Applications:

IF, IHC, IP, WB

Species Specificity:

human, mouse, rat

Cited Species:

human, mouse

**Note: suggested antigen retrieval with TE buffer pH 9.0; (\*) Alternatively, antigen retrieval may be performed with citrate buffer pH 6.0**

Positive Controls:

WB : Jurkat cells; HEK-293 cells, HeLa cells, mouse testis tissue, rat testis tissue

IF : HeLa cells;

## Background Information

CSPP1 interacts with centrosomes and microtubules and plays a role in cell-cycle progression and spindle organization. CSPP1 is required for their common C-terminal domain to interact with Nephrocystin 8 (NPHP8/RPGRIPL) and to form a ternary complex with NPHP8 and NPHP4, and for ciliogenesis in hTERT-RPE1 cells in vitro and are expressed in ciliated renal, retinal, and respiratory cells in vivo

## Notable Publications

Author	Pubmed ID	Journal	Application
Robert F Shearer	29742019	Mol Biol Cell	WB,IF
Kiet Hua	28352462	Cilia	IF
J Stememalm	24901235	Br J Cancer	IHC,IF

## Storage

Storage:

Store at -20°C. Stable for one year after shipment.

Storage Buffer:

PBS with 0.1% sodium azide and 50% glycerol pH 7.3.

Aliquoting is unnecessary for -20°C storage

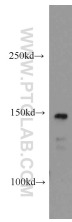
For technical support and original validation data for this product please contact:

T: 1 (888) 4PTGLAB (1-888-478-4522) (toll free in USA), or 1(312) 455-8498 (outside USA)

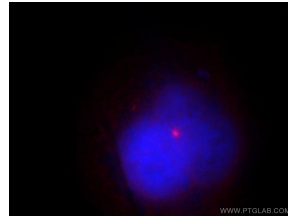
E: [proteintech@ptglab.com](mailto:proteintech@ptglab.com)  
W: [ptglab.com](http://ptglab.com)

This product is exclusively available under Proteintech Group brand and is not available to purchase from any other manufacturer.

## Selected Validation Data



Jurkat cells were subjected to SDS PAGE followed by western blot with 11931-1-AP(CSPP1 antibody) at dilution of 1:200 incubated at room temperature for 1.5 hours



Immunofluorescent analysis of HeLa cells, using CSPP1 antibody 11931-1-AP at 1:25 dilution and Rhodamine-labeled goat anti-rabbit IgG (red). Blue pseudocolor = DAPI (fluorescent DNA dye).