

For Research Use Only

ARL15 Polyclonal antibody

Catalog Number: 11934-1-AP

Featured Product

3 Publications



Basic Information

Catalog Number:

11934-1-AP

Size:

150UL, Concentration: 350 µg/ml by Nanodrop and 227 µg/ml by Bradford method using BSA as the standard;

Source:

Rabbit

Isotype:

IgG

Immunogen Catalog Number:

AG2530

GenBank Accession Number:

BC026093

GeneID (NCBI):

54622

Full Name:

ADP-ribosylation factor-like 15

Calculated MW:

204 aa, 23 kDa

Observed MW:

23 kDa

Purification Method:

Antigen affinity purification

Recommended Dilutions:

WB 1:200-1:1000

IP 0.5-4.0 ug for IP and 1:200-1:1000

for WB

IHC 1:50-1:500

Applications

Tested Applications:

IHC, IP, WB, ELISA

Cited Applications:

IHC, WB

Species Specificity:

human, mouse, rat

Cited Species:

human

Note-IHC: suggested antigen retrieval with TE buffer pH 9.0; (*) Alternatively, antigen retrieval may be performed with citrate buffer pH 6.0

Positive Controls:

WB: mouse thymus tissue,

IP: mouse thymus tissue,

IHC: human lymphoma tissue,

Background Information

ARL15(ADP-ribosylation factor-like protein 15) is also named as ARFRP2(ADP-ribosylation factor-related protein 2) and belongs to the small GTPase superfamily and Arf family. ADP-ribosylation factor-related protein (ARF) is a membrane-associated GTPase with remote similarity to the family of ADP-ribosylation factors (ARF) (PMID:10092663). Arl15 is present in chordates but not lower eukaryotes. Arl15 lacks a site for N-myristoylation, but the N-terminal region contains several well-conserved cysteines, suggesting that it may be palmitoylated (PMID:17506703).

Notable Publications

Author	Pubmed ID	Journal	Application
Jie Zhao	28322786	Biochem Biophys Res Commun	IHC
Jiayi Shen	30682341	Life Sci	WB
Richards J Brent JB	20011104	PLoS Genet	WB

Storage

Storage:

Store at -20°C. Stable for one year after shipment.

Storage Buffer:

PBS with 0.02% sodium azide and 50% glycerol pH 7.3.

Aliquoting is unnecessary for -20°C storage

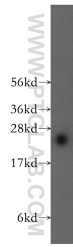
For technical support and original validation data for this product please contact:

T: 1 (888) 4PTGLAB (1-888-478-4522) (toll free in USA), or 1(312) 455-8498 (outside USA)

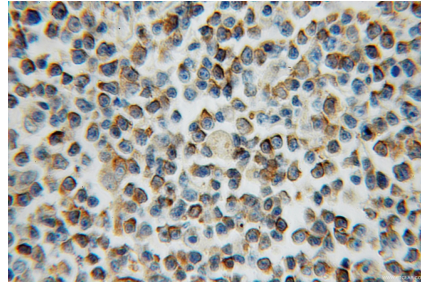
E: proteintech@ptglab.com
W: ptglab.com

This product is exclusively available under Proteintech Group brand and is not available to purchase from any other manufacturer.

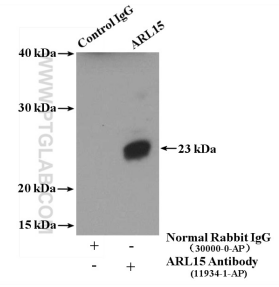
Selected Validation Data



mouse thymus tissue were subjected to SDS PAGE followed by western blot with 11934-1-AP (ARL15 antibody) at dilution of 1:300 incubated at room temperature for 1.5 hours.



Immunohistochemical analysis of paraffin-embedded human lymphoma using 11934-1-AP (ARL15 antibody) at dilution of 1:50 (under 40x lens).



IP result of anti-ARL15 (IP:11934-1-AP, 4ug; Detection:11934-1-AP 1:300) with mouse thymus tissue lysate 4000 ug.