

For Research Use Only

MAPKSP1 Polyclonal antibody

Catalog Number: 11937-1-AP

2 Publications



Basic Information

Catalog Number:

11937-1-AP

Size:

150ul, Concentration: 300 ug/ml by Nanodrop and 213 ug/ml by Bradford method using BSA as the standard;

Source:

Rabbit

Isotype:

IgG

Immunogen Catalog Number:

AG2534

GenBank Accession Number:

BC026245

GeneID (NCBI):

8649

UNIPROT ID:

Q9UHA4

Full Name:

MAPK scaffold protein 1

Calculated MW:

124 aa, 14 kDa

Observed MW:

14 kDa

Purification Method:

Antigen affinity purification

Recommended Dilutions:

WB 1:500-1:2000

IHC 1:20-1:200

Applications

Tested Applications:

WB, IHC, ELISA

Cited Applications:

WB

Species Specificity:

human, mouse, rat

Cited Species:

human

Note-IHC: suggested antigen retrieval with TE buffer pH 9.0; (*) Alternatively, antigen retrieval may be performed with citrate buffer pH 6.0

Positive Controls:

WB : human liver tissue, L02 cells, mouse brain tissue, mouse liver tissue

IHC : human prostate cancer tissue, human heart tissue, human liver tissue

Background Information

MAPKSP1, also named as mitogen activated protein kinase kinase 1 interacting protein 1, Map2k1ip1, MEK partner 1, Lamtor3 and MP1. It was first identified as a scaffold protein enhancing the efficiency of the MAPK pathway by facilitating the interaction between MEK1 and ERK1 upon serum stimulation (PMID: 9733512). Later, it has been demonstrated that MAPKSP1 enhances activation of both ERK1 and ERK2 as a response to EGF (PMID: 12479806) and fibronectin (PMID: 15923628). MAPKSP1 is involved in regulating endosomal signaling (PMID: 17178906), and a role in cancer, via MEK and ERK hyperactivation, has been demonstrated in pancreatic tumorigenesis (PMID: 24209743). MAPKSP1 has two isoforms with the molecular weight of 13-14 kDa.

Notable Publications

Author	Pubmed ID	Journal	Application
Yihan Wang	35959437	Front Pharmacol	WB
Yan Huang	39875724	EMBO J	WB

Storage

Storage:

Store at -20°C. Stable for one year after shipment.

Storage Buffer:

PBS with 0.02% sodium azide and 50% glycerol, pH7.3

Aliquoting is unnecessary for -20°C storage

*** 20ul sizes contain 0.1% BSA

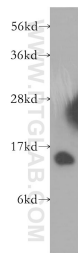
For technical support and original validation data for this product please contact:

T: 1 (888) 4PTGLAB (1-888-478-4522) (toll free in USA), or 1(312) 455-8498 (outside USA)

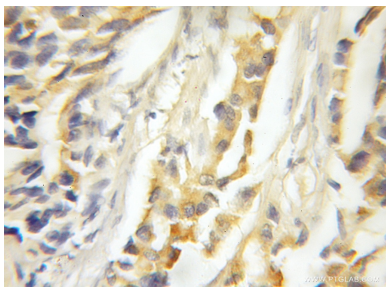
E: proteintech@ptglab.com
W: ptglab.com

This product is exclusively available under Proteintech Group brand and is not available to purchase from any other manufacturer.

Selected Validation Data



human liver tissue were subjected to SDS PAGE followed by western blot with 11937-1-AP (MAPKSP1 antibody) at dilution of 1:500 incubated at room temperature for 1.5 hours.



Immunohistochemical analysis of paraffin-embedded human prostate cancer using 11937-1-AP (MAPKSP1 antibody) at dilution of 1:50 (under 10x lens).