

For Research Use Only

# SUB1 Polyclonal antibody

Catalog Number: 11956-1-AP

Featured Product



## Basic Information

### Catalog Number:

11956-1-AP

### Size:

150ul, Concentration: 1000 ug/ml by Nanodrop and 580 ug/ml by Bradford method using BSA as the standard;

### Source:

Rabbit

### Isotype:

IgG

### Immunogen Catalog Number:

AG2559

### GenBank Accession Number:

BC022339

### GeneID (NCBI):

10923

### UNIPROT ID:

P53999

### Full Name:

SUB1 homolog (S. cerevisiae)

### Calculated MW:

14 kDa

### Observed MW:

18-23 kDa

### Purification Method:

Antigen affinity purification

### Recommended Dilutions:

WB: 1:500-1:2000

IHC: 1:50-1:500

IF/ICC: 1:200-1:800

## Applications

### Tested Applications:

WB, IHC, IF/ICC, ELISA

### Species Specificity:

human, mouse, rat

**Note-IHC: suggested antigen retrieval with TE buffer pH 9.0; (\*) Alternatively, antigen retrieval may be performed with citrate buffer pH 6.0**

### Positive Controls:

WB: rat liver tissue, HeLa cells, C2C12 cells

IHC: human gliomas tissue,

IF/ICC: HeLa cells,

## Background Information

SUB1 gene encodes activated RNA polymerase II transcriptional coactivator p15, also termed as positive cofactor 4 (PC4) or p14. SUB1 is a sort of general coactivator that functions in assembling and stabilization of transcription complex. It has DNA binding activity and is localized in the nucleus, multiple modification sites of phosphorylation or acetylation may turn it appear slightly shifted molecular weight. Catalog#11956-1-AP is a rabbit polyclonal antibody raised against full-length human SUB1. This antibody recognizes 14-16 kDa (P14 or P15), 20 kDa (phospho form) and 30 kDa (Dimer form).

## Storage

### Storage:

Store at -20°C. Stable for one year after shipment.

### Storage Buffer:

PBS with 0.02% sodium azide and 50% glycerol, pH7.3

Aliquoting is unnecessary for -20°C storage

\*\*\* 20ul sizes contain 0.1% BSA

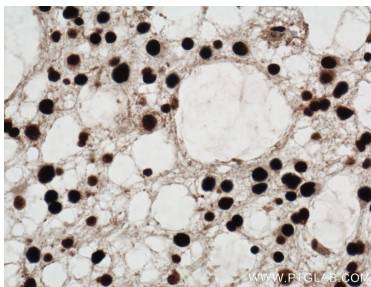
For technical support and original validation data for this product please contact:

T: 1 (888) 4PTGLAB (1-888-478-4522) (toll free in USA), or 1(312) 455-8498 (outside USA)

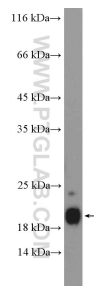
E: [proteintech@ptglab.com](mailto:proteintech@ptglab.com)  
W: [ptglab.com](http://ptglab.com)

This product is exclusively available under Proteintech Group brand and is not available to purchase from any other manufacturer.

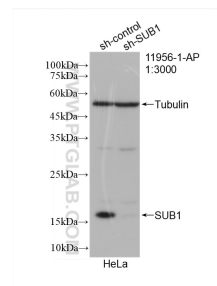
## Selected Validation Data



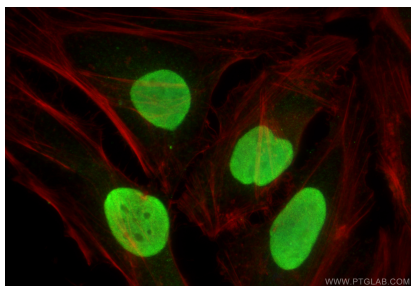
Immunohistochemical analysis of paraffin-embedded human gliomas tissue slide using 11956-1-AP (SUB1 antibody) at dilution of 1:100 (under 40x lens. Heat mediated antigen retrieval with Tris-EDTA buffer (pH 9.0)).



rat liver tissue were subjected to SDS PAGE followed by western blot with 11956-1-AP (SUB1 Antibody) at dilution of 1:1000 incubated at room temperature for 1.5 hours.



WB result of SUB1 antibody (11956-1-AP; 1:3000; incubated at room temperature for 1.5 hours) with sh-Control and sh-SUB1 transfected HeLa cells.



Immunofluorescent analysis of (4% PFA) fixed HeLa cells using SUB1 antibody (11956-1-AP) at dilution of 1:400 and CoraLite®488-Conjugated Goat Anti-Rabbit IgG(H+L) (SA00013-2), CL594-Phalloidin (red).