

For Research Use Only

DNAJC2/MPP11 Polyclonal antibody

Catalog Number: 11971-1-AP

2 Publications



Basic Information

Catalog Number:

11971-1-AP

Size:

150ul, Concentration: 200 ug/ml by Nanodrop and 133 ug/ml by Bradford method using BSA as the standard;

Source:

Rabbit

Isotype:

IgG

Immunogen Catalog Number:

AG2594

GenBank Accession Number:

BC056682

GeneID (NCBI):

27000

UNIPROT ID:

Q99543

Full Name:

DnaJ (Hsp40) homolog, subfamily C, member 2

Calculated MW:

72 kDa

Observed MW:

66-75 kDa

Purification Method:

Antigen affinity purification

Recommended Dilutions:

WB: 1:1000-1:8000

IP: 0.5-4.0 ug for 1.0-3.0 mg of total protein lysate

IHC: 1:50-1:500

IF/ICC: 1:10-1:100

Applications

Tested Applications:

WB, IHC, IF/ICC, IP, ELISA

Cited Applications:

WB

Species Specificity:

human, mouse, rat

Cited Species:

human

Note-IHC: suggested antigen retrieval with TE buffer pH 9.0; (*) Alternatively, antigen retrieval may be performed with citrate buffer pH 6.0

Positive Controls:

WB: Caco-2 cells, HEK-293 cells, HeLa cells, HepG2 cells, K-562 cells, mouse liver tissue, PC-3 cells

IP: mouse liver tissue,

IHC: human liver cancer tissue,

IF/ICC: HepG2 cells,

Notable Publications

Author	Pubmed ID	Journal	Application
Guiyou Tian	34010456	EMBO J	WB
Mohamed Alalem	36077724	Cancers (Basel)	WB

Storage

Storage:

Store at -20°C. Stable for one year after shipment.

Storage Buffer:

PBS with 0.02% sodium azide and 50% glycerol, pH7.3

Aliquoting is unnecessary for -20°C storage

*** 20ul sizes contain 0.1% BSA

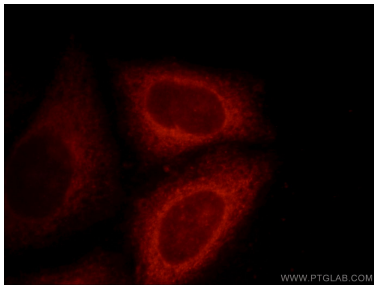
For technical support and original validation data for this product please contact:

T: 1 (888) 4PTGLAB (1-888-478-4522) (toll free in USA), or 1(312) 455-8498 (outside USA)

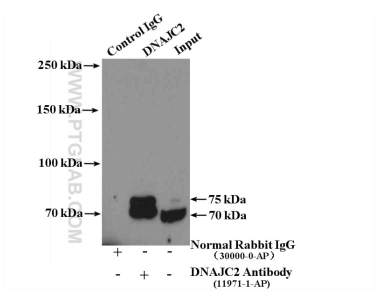
E: proteintech@ptglab.com
W: ptglab.com

This product is exclusively available under Proteintech Group brand and is not available to purchase from any other manufacturer.

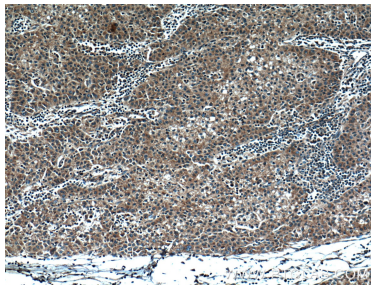
Selected Validation Data



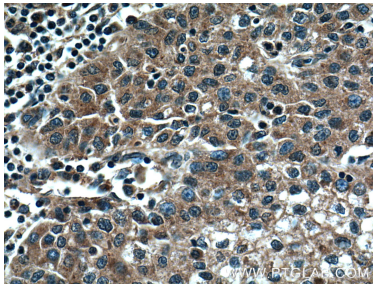
Immunofluorescent analysis of HepG2 cells, using DNAJC2 antibody 11971-1-AP at 1:25 dilution and Rhodamine-labeled goat anti-rabbit IgG (red).



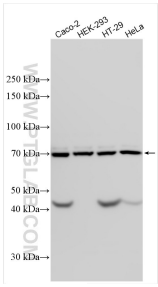
IP result of anti-DNAJC2/MPP11 (IP:11971-1-AP, 4ug; Detection:11971-1-AP 1:1000) with mouse liver tissue lysate 6000ug.



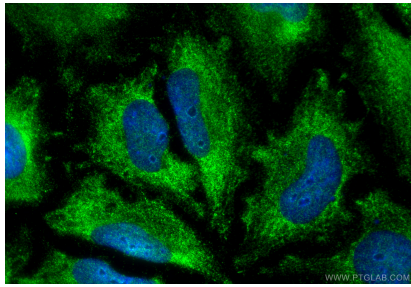
Immunohistochemical analysis of paraffin-embedded human liver cancer tissue slide using 11971-1-AP (DNAJC2/MPP11 antibody at dilution of 1:200 (under 10x lens). Heat mediated antigen retrieval with Tris-EDTA buffer (pH 9.0).



Immunohistochemical analysis of paraffin-embedded human liver cancer tissue slide using 11971-1-AP (DNAJC2/MPP11 antibody at dilution of 1:200 (under 40x lens). Heat mediated antigen retrieval with Tris-EDTA buffer (pH 9.0).



Various lysates were subjected to SDS PAGE followed by western blot with 11971-1-AP (DNAJC2/MPP11 antibody) at dilution of 1:4000 incubated at room temperature for 1.5 hours.



Immunofluorescent analysis of (-20°C Ethanol) fixed HeLa cells using DNAJC2/MPP11 antibody (11971-1-AP) at dilution of 1:400 and CoraLite®488-Conjugated Goat Anti-Rabbit IgG(H+L) (SA00013-2).