

For Research Use Only

P2RY12 Polyclonal ANTIBODY

Catalog Number: 11976-1-AP



Basic Information

Catalog Number:
11976-1-AP

Size:
28 µg/150 µl

Source:
Rabbit

Isotype:
IgG

Purification Method:
Antigen affinity purification

Immunogen Catalog Number:
AG2601

GenBank Accession Number:
BC017898

GeneID (NCBI):
64805

Full Name:
purinergic receptor P2Y, G-protein coupled, 12

Calculated MW:
342aa, 39 kDa

Observed MW:
45 kDa

Recommended Dilutions:
WB 1:200-1:1000

Applications

Tested Applications:
WB, ELISA

Species Specificity:
human,mouse,rat

Note: suggested antigen retrieval with TE buffer pH 9.0; (*) Alternatively, antigen retrieval may be performed with citrate buffer pH 6.0

Positive Controls:

WB : mouse spinal cord tissue; human adrenal gland tissue

Background Information

Notable Publications

Author	Pubmed ID	Journal	Application
--------	-----------	---------	-------------

Storage

Storage:
Store at -20°C. Stable for one year after shipment.
Storage Buffer:
PBS with 0.1% sodium azide and 50% glycerol pH 7.3.
Aliquoting is unnecessary for -20°C storage

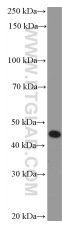
For technical support and original validation data for this product please contact:

T: 1 (888) 4PTGLAB (1-888-478-4522) (toll free in USA), or 1(312) 455-8498 (outside USA)

E: proteintech@ptglab.com
W: ptglab.com

This product is exclusively available under Proteintech Group brand and is not available to purchase from any other manufacturer.

Selected Validation Data



mouse spinal cord tissue were subjected to SDS PAGE followed by western blot with 11976-1-AP (P2RY12 Antibody) at dilution of 1:300 incubated at room temperature for 1.5 hours