

For Research Use Only

BAF170 Polyclonal antibody

Catalog Number: 12018-1-AP

4 Publications



Basic Information

Catalog Number:

12018-1-AP

Size:

150ul, Concentration: 1100 ug/ml by Nanodrop and 740 ug/ml by Bradford method using BSA as the standard;

Source:

Rabbit

Isotype:

IgG

Immunogen Catalog Number:

AG2634

GenBank Accession Number:

BC013045

GeneID (NCBI):

6601

UNIPROT ID:

Q8TAQ2

Full Name:

SWI/SNF related, matrix associated, actin dependent regulator of chromatin, subfamily c, member 2

Calculated MW:

1214 aa, 132 kDa

Observed MW:

170 kDa

Purification Method:

Antigen affinity purification

Recommended Dilutions:

WB: 1:500-1:1000

IP: 0.5-4.0 ug for 1.0-3.0 mg of total protein lysate

IHC: 1:20-1:200

IF/ICC: 1:200-1:800

Applications

Tested Applications:

WB, IHC, IF/ICC, IP, ELISA

Cited Applications:

WB, IP

Species Specificity:

human, mouse, rat

Cited Species:

human

Positive Controls:

WB: HeLa cells, A431 cells

IP: HeLa cells,

IHC: human medulloblastoma tissue,

IF/ICC: HepG2 cells,

Note-IHC: suggested antigen retrieval with TE buffer pH 9.0; (*) Alternatively, antigen retrieval may be performed with citrate buffer pH 6.0

Background Information

BAF170, also named as SWI/SNF complex 170 kDa subunit or SMARCC2, is a 1214 amino acid protein, which belongs to the SMARCC family. BAF170 is ubiquitously expressed. BAF170 is involved in transcriptional activation and repression of select genes by chromatin remodeling. BAF170 may be required for CoREST dependent repression of neuronal specific gene promoters in non-neuronal cells. BAF170 belongs to the neural progenitors-specific chromatin remodeling complex (npBAF complex) and the neuron-specific chromatin remodeling complex (nBAF complex). The calculated molecular weight of BAF170, is 133 kDa, but modified BAF170 is about 170 kDa. (PMID: 8804307)

Notable Publications

Author	Pubmed ID	Journal	Application
Shibin Hu	34534457	Mol Cell	
Fang Wang	33482392	Cell Mol Gastroenterol Hepatol	
Zhaoran Sun	38852505	Biochem Biophys Res Commun	WB

Storage

Storage:

Store at -20°C. Stable for one year after shipment.

Storage Buffer:

PBS with 0.02% sodium azide and 50% glycerol, pH7.3

Aliquoting is unnecessary for -20°C storage

*** 20ul sizes contain 0.1% BSA

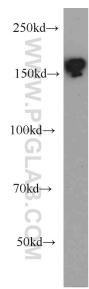
For technical support and original validation data for this product please contact:

T: 1 (888) 4PTGLAB (1-888-478-4522) (toll free in USA), or 1(312) 455-8498 (outside USA)

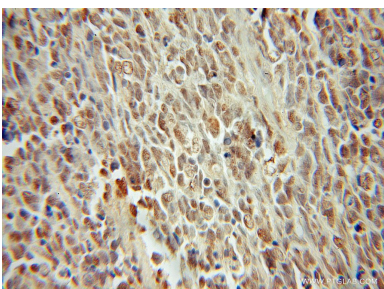
E: proteintech@ptglab.com
W: ptglab.com

This product is exclusively available under Proteintech Group brand and is not available to purchase from any other manufacturer.

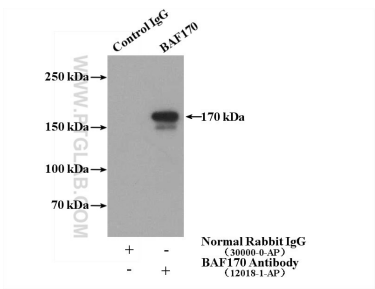
Selected Validation Data



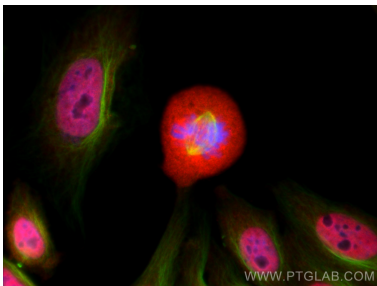
HeLa cells were subjected to SDS PAGE followed by western blot with 12018-1-AP (SMARCC2 antibody) at dilution of 1:500 incubated at room temperature for 1.5 hours.



Immunohistochemical analysis of paraffin-embedded human medulloblastoma using 12018-1-AP (SMARCC2 antibody) at dilution of 1:50 (under 10x lens).



IP result of anti-BAF170 (IP:12018-1-AP, 4ug; Detection:12018-1-AP 1:700) with HeLa cells lysate 3200ug.



Immunofluorescent analysis of (4% PFA) fixed HepG2 cells using BAF170 antibody (12018-1-AP) at dilution of 1:400 and CoraLite®594-Conjugated Goat Anti-Rabbit IgG(H+L) (SA00013-4), Alpha Tubulin antibody (66031-1-Ig, Clone: 1E4C11, green).