

For Research Use Only

# TBCE Polyclonal antibody

Catalog Number: 12021-1-AP

Featured Product

3 Publications



## Basic Information

**Catalog Number:**

12021-1-AP

**GenBank Accession Number:**

BC008654

**Purification Method:**

Antigen affinity purification

**Size:**

150ul, Concentration: 1000 µg/ml by Nanodrop and 333 µg/ml by Bradford method using BSA as the standard;

**GeneID (NCBI):**

6905

**Recommended Dilutions:**

WB 1:1000-1:5000  
IHC 1:50-1:500

**Source:**

Rabbit

**Full Name:**

tubulin folding cofactor E

**Calculated MW:**

527 aa, 59 kDa

**Isotype:**

IgG

**Observed MW:**

59 kDa

**Immunogen Catalog Number:**

AG2650

## Applications

**Tested Applications:**

IHC, WB, ELISA

**Cited Applications:**

IF, IHC, WB

**Species Specificity:**

human, mouse, rat

**Cited Species:**

human, mouse

**Note-IHC: suggested antigen retrieval with TE buffer pH 9.0; (\*) Alternatively, antigen retrieval may be performed with citrate buffer pH 6.0**

**Positive Controls:**

WB : HEK-293 cells, HeLa cells

IHC : human prostate cancer tissue,

## Background Information

### Notable Publications

Author	Pubmed ID	Journal	Application
Lukas Juergens	32712744	Histochem Cell Biol	IF
Rak Kristen K	24120439	Exp Neurol	IHC
Biernacki Melinda A MA	20103624	Cancer Res	WB

## Storage

**Storage:**

Store at -20°C. Stable for one year after shipment.

**Storage Buffer:**

PBS with 0.02% sodium azide and 50% glycerol pH 7.3.

Aliquoting is unnecessary for -20°C storage

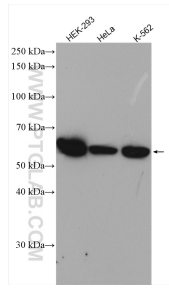
For technical support and original validation data for this product please contact:

T: 1 (888) 4PTGLAB (1-888-478-4522) (toll free in USA), or 1(312) 455-8498 (outside USA)

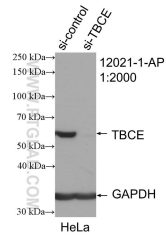
E: [proteintech@ptglab.com](mailto:proteintech@ptglab.com)  
W: [ptglab.com](http://ptglab.com)

**This product is exclusively available under Proteintech Group brand and is not available to purchase from any other manufacturer.**

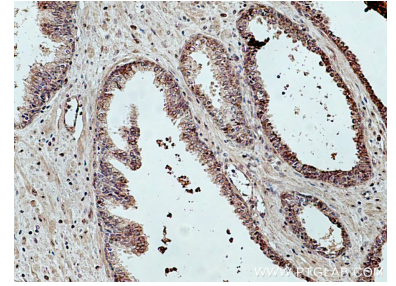
## Selected Validation Data



Various lysates were subjected to SDS PAGE followed by western blot with 12021-1-AP (TBCE antibody) at dilution of 1:4000 incubated at room temperature for 1.5 hours.



WB result of TBCE antibody (12021-1-AP; 1:2000; incubated at room temperature for 1.5 hours) with sh-Control and sh-TBCE transfected HeLa cells.



Immunohistochemical analysis of paraffin-embedded human prostate cancer tissue slide using 12021-1-AP (TBCE antibody) at dilution of 1:200 (under 10x lens). Heat mediated antigen retrieval with Tris-EDTA buffer (pH 9.0).