

For Research Use Only

POP1 Polyclonal ANTIBODY



Catalog Number: 12029-1-AP

Basic Information

Catalog Number: 12029-1-AP	GenBank Accession Number: BC011529	Recommended Dilutions: WB 1:500-1:1000 IP 0.5-4.0 ug for IP and 1:500-1:1000 for WB IF 1:10-1:100
Size: 58 µg/150 µl	GeneID (NCBI): 10940	
Source: Rabbit	Full Name: processing of precursor 1, ribonuclease P/MRP subunit (S. cerevisiae)	
Isotype: IgG	Calculated MW: 1024aa, 115 kDa	
Purification Method: Antigen affinity purification	Observed MW: 115 kDa	
Immunogen Catalog Number: AG2660		

Applications

Tested Applications: IF, IP, WB, ELISA	Positive Controls: WB : HeLa cells; IP : HeLa cells; IF : HepG2 cells;
Species Specificity: human,mouse,rat	
Note: suggested antigen retrieval with TE buffer pH 9.0; (*) Alternatively, antigen retrieval may be performed with citrate buffer pH 6.0	

Background Information

Notable Publications

Author	Pubmed ID	Journal	Application
--------	-----------	---------	-------------

Storage

Storage:
Store at -20°C. Stable for one year after shipment.
Storage Buffer:
PBS with 0.1% sodium azide and 50% glycerol pH 7.3.
Aliquoting is unnecessary for -20°C storage

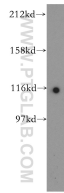
For technical support and original validation data for this product please contact:

T: 1 (888) 4PTGLAB (1-888-478-4522) (toll free in USA), or 1(312) 455-8498 (outside USA)

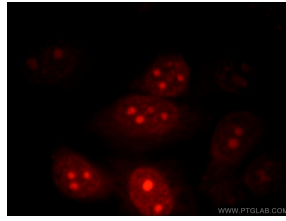
E: proteintech@ptglab.com
W: ptglab.com

This product is exclusively available under Proteintech Group brand and is not available to purchase from any other manufacturer.

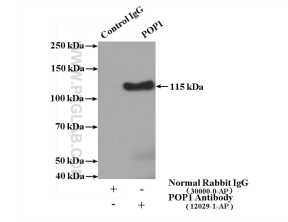
Selected Validation Data



HeLa cells were subjected to SDS PAGE followed by western blot with 12029-1-AP(POP1 antibody) at dilution of 1:500 incubated at room temperature for 1.5 hours



Immunofluorescent analysis of HepG2 cells, using POP1 antibody 12029-1-AP at 1:25 dilution and Rhodamine-labeled goat anti-rabbit IgG (red).



IP Result of anti-POP1 (IP:12029-1-AP, 4ug; Detection:12029-1-AP 1:500) with HeLa cells lysate 2400ug.